



JOB DESCRIPTION

POST: CONSULTANT OBSTETRICIAN and GYNAECOLOGIST

BASE: Erne Hospital, Enniskillen

REPORTS TO: Clinical Coordinator for the Directorate

RESPONSIBLE TO: Director of Acute Hospital Services

Purpose of the Post:

The successful candidate will be joining three consultants currently in post. The four consultants will provide the full range of inpatient and outpatient obstetrical and gynaecological services within the Fermanagh, Omagh and southern sector of Strabane geographical area. All inpatient maternity cases and major gynaecology surgery is provided at the Erne Hospital. Day Case surgery and the full range of outpatient services are provided at both the Erne and Tyrone County Hospitals.

The Obstetricians/Gynaecologists operate a 1:4 'on-call' rota and cover each other during times of unavailability. The consultant team are supported by Junior Medical staff consisting of five S.H.O.'s providing 24 hour cover. As a member of the consultant team the successful candidate will play a key role in the promotion of the service including development and implementation of plans to encourage the use of Obstetric/Gynaecological services provided by the Trust.

General Description:

The Obstetrical/Gynaecological services were reviewed and rationalised in 1994 with a combined inpatient department being established at Erne Hospital site. The Directorate also includes a newly established Neonatal Intensive Care Unit providing care up to level 2 high dependency intensive care under the direction of a team of Consultant Paediatricians.

The Trust provides services to a population of approximately 115,000 and is responsible for the provision of a complete range of Health and Social Care services in hospital and community.

The Trust has two acute hospitals, Erne Hospital (Enniskillen) and Tyrone County Hospital (Omagh) 28 miles apart. The Trust has a current operating income of circa.

CONSOG

Key Clinical Tasks:

- The postholder will share the responsibility for all Inpatient (at Erne site), Outpatient and Day Case services at both sites.
- Participate in the 'On-Call' rota with other three Consultant Obstetricians/Gynaecologists.
- Share in the provision of Outpatient antenatal and gynae. services at Castlederg (30 miles) as required.
- It is desirable that the postholder will have a special interest in colposcopy, laparoscopic and day surgery with an aim to assuming responsibility for one of these.

Key Organisational Relationships:

- Provide advice to the Trust Chief Executive and Director of Acute Hospital Services via the Clinical Co-ordinator on all aspects of Obstetric and Gynae. services.
- Responsible to the Medical Director for the maintenance of personal professional standards.
- Set out a clear work plan for Junior Medical staff and provide supervision at Outpatient sessions and during ward work.
- Participate in the teaching and development of undergraduate medical students and postgraduate medical staff.
- Participate when required in Maternity Services Liaison Committee or on any other consumer forum which may develop.
- The postholder will be a member of the Trust Medical Staff Committee.

Responsibilities

(a) Quality

- The Obstetric/Gynae. team will establish protocols and systems for setting and monitoring standards of care, reviewing effectiveness and efficiency of practice in light of available evidence and recommended guidelines.
- The Obstetric/Gynae. consultant team will assist with the development and implementation of systems that measure the level of services providing 'best practice' standards offered by the Trust.
- The Obs./Gynae. consultant team will participate in medical and clinical audit activities and apply the results to improve the service. A yearly programme identifying priorities for audit will be agreed.

CONSOG.

(b) Managerial

- Work with consultant colleagues. Clinical Services Manager, Senior Midwifery/Nursing staff and others in formulation/updating policy guidelines and initiatives to develop and enhance services within the Trust.
- Undertake administrative duties associated with patient care to ensure arrangements are in place to meet quality standards for appointments and discharge procedures etc within contracts.

Staffing Support

Within the directorate staffing support includes:-

Community Midwifery staff
Hospital Midwifery staff
Midwifery support staff
Neonatal Midwifery staff
Neonatal support staff
Gynae. ward nursing staff
Gynae. ward support staff
Team clerical support staff



The systems used to support administrative and information support are largely computerised and all clerical support staff are trained in diagnostic coding, audio typing and all other office automation and clerical tasks.

Office Accommodation and Secretarial Support

The appointee will have office accommodation provided in the Erne Hospital and will share existing secretarial support staff.

CONSOG.

Organisational Profile

The Managerial structure is as on the *attached* sheets (1&2). Overall directorate/acute hospital activity for the period 1 April 1996 - 31 December 1996:

ERNE HOSPITAL

Erne Hospital overall bed complement	██████████
Inpatient Maternity beds	██████████
Inpatient Gynaecology beds	██████████
Neonatal cots	██████████
Number of births	██████████
Number of Outpatient attendances (Obs.)	██████████
Number of Outpatient attendances (Gynae.)	██████████
Number of Inpatient/Day Case episodes (Gynae.)	██████████

* It is anticipated that the Maternity Unit will have near 1300 births in 1996/97.

Other specialties in the Erne Hospital include:

General Medicine
General Surgery
Cardiovascular
General Paediatrics
Anaesthetics with Epidural service.

Visiting consultants provide a service in:

Orthopaedics
E.N.T.
Dentistry
Radiotherapy
Ophthalmology
Dermatology
Neurology
Haematology
Oral Surgery and Orthodontics.

CONSOG.

MEDICAL STAFF - ERNE HOSPITAL:

SPECIALTY	NAME	SPECIAL INTERESTS
ANAESTHETICS	██████████	Acute Pain Management, Obstetric Anaesthetics
	██████████	Acute Pain Relief, Intensive Care
	██████████	Day Case Unit, Hospice Care, Intensive Care
	██████████	Chronic Pain Relief, Intensive Care
GENERAL SURGERY	██████████	General Surgery, Laparoscopic Surgery, Genito Urinary Surgery
	██████████	Laparoscopic and Breast Surgery
	██████████	General Surgery, Breast, Gastrointestinal Surgery
GENERAL MEDICINE	██████████	Geriatric Medicine, Stroke Rehabilitation, General Medicine
	██████████	General Medicine, Cardiology, Endocrinology
	██████████	General Medicine, Endoscopy, Gastroenterology
OBSTETRICS AND GYNAECOLOGY	██████████	Reproductive Endocrinology
	██████████	Colposcopy and Cervical Pathology
	██████████	Transvaginal Ultrasound, Ultrasonic Fetal Growth Assessment, Doppler Fetal Assessment
PAEDIATRICS	██████████	Neonatology
	██████████	Infectious Diseases
	██████████	Community Paediatrics
RADIOLOGY	██████████	Gastro-Intestinal, Non-Invasive Cardiac Investigation and Oncology (post shared with Tyrone County Hospital)
	██████████	Chest and Orthopaedic Radiology and Ultrasound

CONSOG

TYRONE COUNTY HOSPITAL

The Tyrone County Hospital has a total of [REDACTED] beds (including [REDACTED] places for day procedure ward with associated theatre and [REDACTED] places on sub-regional renal unit).

Outpatient Attendances = [REDACTED] (1995/96)

Total Admissions = [REDACTED] (1995/96)

including renal dialysis and day cases

Services Available at the Tyrone County Hospital are:

General surgery

ENT surgery

General Medicine

Diabetic services

Non-invasive Cardiology

Renal Dialysis and Renal Medicine

Geriatric assessment and Rehabilitation.

Visiting Consultants provide a service in:

Orthopaedics

Obstetrics and Gynaecology (including day cases)

Paediatrics

Dental and Oral Surgery

Orthodontics

Radiotherapy

Mental Handicap

Psychiatry

Ophthalmology

Dermatology

Neurology and Haematology.

Library Facilities

There are Medical libraries in the Erne and Tyrone County Hospitals, which are supplied with books by the Medical Library of Queen's University, Belfast. Both libraries has a personal computer with CD ROM facility and has Cochrane Database installed.

C'ONSOG.

MEDICAL STAFF - TYRONE COUNTY HOSPITAL:

SPECIALTY	NAME	SPECIAL INTERESTS
ANAESTHETICS	██████████	Intensive Care
	██████████	Intensive Care
	██████████	Intensive Care, Resuscitation
	██████████	Total IV Anaesthesia, Intensive Care, Pain Relief, Day Care Surgery
GENERAL SURGERY	██████████	Locum Surgeon - Vascular and Chest Surgery
	██████████	General Surgery, Genito-Urinary Surgery, Vascular Surgery
	██████████	General Surgery, Gastroenterology, Surgical Endoscopy, Breast Pathology, Salivary Tumours especially Parotids
GENERAL	██████████	Metabolic Medicine especially Diabetes
	██████████	Consultant of Renal Sub-Regional Unit, Medical Endoscopy
	██████████	Acute and Long Stay Care of the Elderly
	██████████	General Medicine, Non-Invasive Cardiology, Chest Medicine
E.N.T. SURGERY	██████████	Locum Consultant -
	██████████	Throat and Sinus Surgery, Head and Neck Oncology, Endoscopic Sinus Surgery, Laser Surgery
	██████████	Paediatric Oncology
RADIOLOGY	██████████	Gastro-Intestinal, Non-Invasive Cardiac Investigation and Oncology (post shared with Erne Hospital)

CONSOG

Qualifications and Continuing Medical Education









Applicants are expected to hold an appropriate higher medical qualification and to have extensive appropriate experience and training in obstetrics.

The Trust is committed to Continued Medical Education. It is anticipated that in addition to Research and Audit, appropriate time will be set aside to facilitate Continued Medical Education requirements.

TYRONE AND FERMANAGH HOSPITAL

The Sperrin Lakeland Trust provides a full range of hospital and community services including mental health services. These services are becoming increasingly community orientated, but also include hospital services based at Tyrone and Fermanagh Hospital.

Consultants:

	Psychiatric Geriatrics
	Forensic Psychiatry, Tyrone and Fermanagh Hospital
	Community Mental Health Fermanagh team, Belmore House, Enniskillen
	Addiction services
	Community Mental Health Omagh team, Lissan House:
	Acute, Rehabilitation and Continuing Care
	Child and Adolescent Psychiatry, 17 Campsie Avenue, Omagh
	Community Mental Health Tyrone and Fermanagh service: Acute, Rehabilitation and Continuing Care.

Terms and Conditions

Remuneration

The national Terms and Conditions of service for Hospital Staff will apply.

Contributions will be payable under the Health and Social Service Superannuation Scheme. There is reciprocity between the Northern Ireland scheme and that in operation in mainland Britain.

Hours

The hours of work will be determined by the Obstetric/Gynaecology services offered by the Trust.

Substantial leave periods should only be taken by one consultant at any one time.

CONS00.

Start Date

Appointment to the post will be as soon as possible, subject to the period of notice required by the successful candidate.

Residence

The post will be based at the Erne Hospital. The post holder must live within 10 miles of the Erne Hospital and must maintain contact with the public telephone service.

Registration and Defence

Registration with the GMC must be maintained. The Trust bears responsibility for claims of Dental/Medical negligence against practitioners occurring in the course of their Health Service employment. Practitioners are advised to maintain their defence body membership in order to ensure that they are covered for any work which does not fall within the scope of the indemnity scheme.

Private Practice

A practitioner, contracting on a whole-time basis, shall declare annually that his/her income from private practice did not exceed 10% of his/her gross Health Service income (including distinction and meritorious service awards, if applicable).

Medical Examination

Any offer of appointment will be subject to the completion of a satisfactory general health assessment. This will be arranged by the Trust.

Locality Profile

Local Council and Northern Ireland Tourist Board publicity brochures are *enclosed* with application forms, and these give an excellent overview of the area. The area is predominantly agricultural with a developing tourist industry. Manufacturing industry is not dominant and is mainly light industry and agricultural engineering. There are excellent educational facilities at primary and secondary school levels near both acute hospitals. There is also ample provision of modern swimming pools, recreation centres and a theatre, among other facilities. Please see *enclosed* local authority publicity material.

Communications by road are good with major airports at Belfast and Dublin, 2 hours distant. Public transport is adequate but there are no rail services nearby.

CONSOG

Supplementary Information

Canvassing

Canvassing will disqualify. Any approach to a member of the Trust Board by or at the request of the candidate for the purpose of obtaining support for his/her application will be treated as canvassing.

Visit to Hospital Site(s)

Candidates selected for interview are encouraged to visit the Hospitals by request to Personnel Department at Tyrone and Fermanagh Hospital, Omagh, County Tyrone. BT79 0NS. Telephone: 01662 - 245211, who make the necessary arrangements in conjunction with Mr E Fee, Director of Acute Hospital Services..

Applications

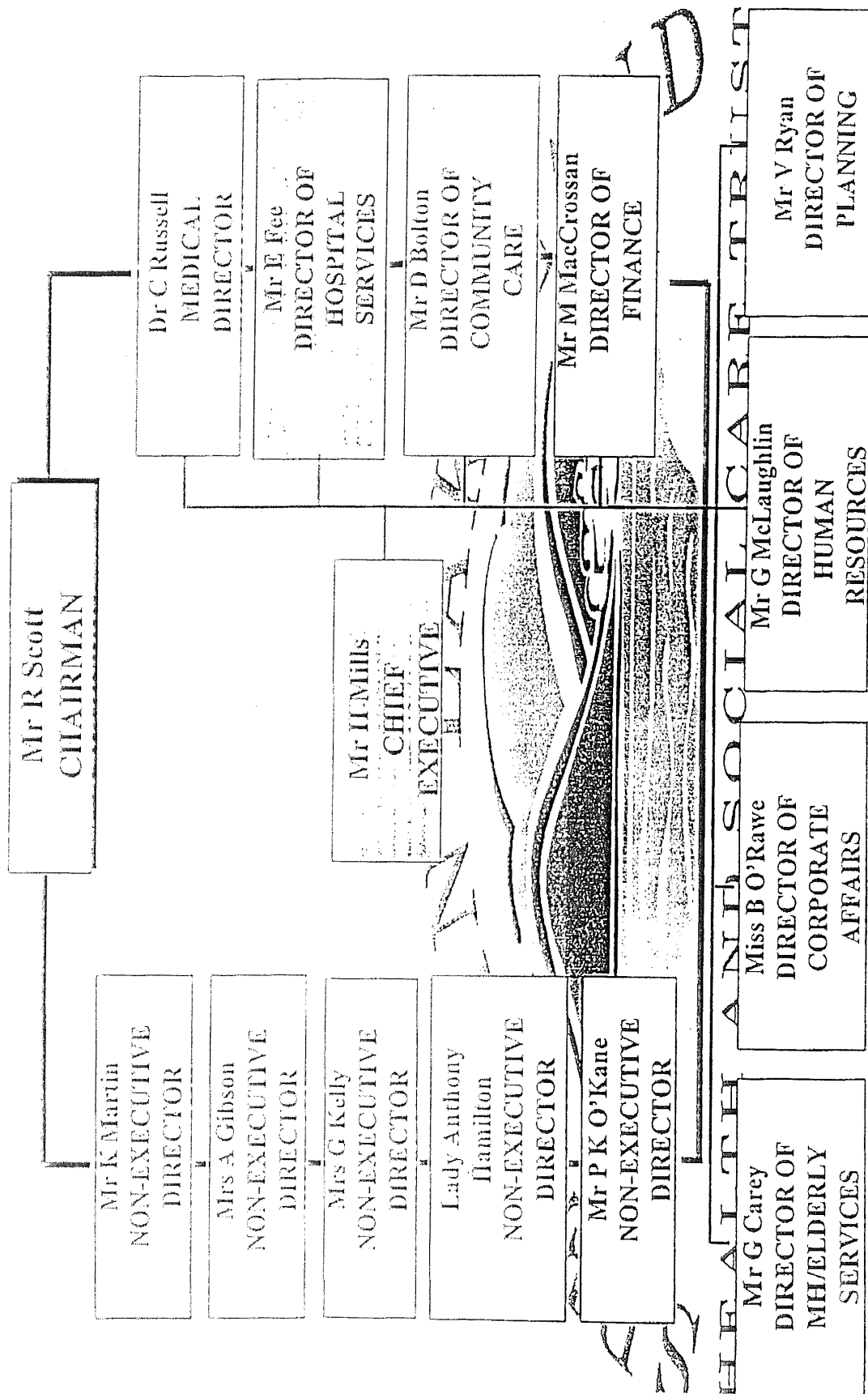
Applications must be made on the prescribed form and must be returned to:

Personnel Department (Recruitment)
Tyrone and Fermanagh Hospital
Omagh
County Tyrone
BT79 0NS

June 1997

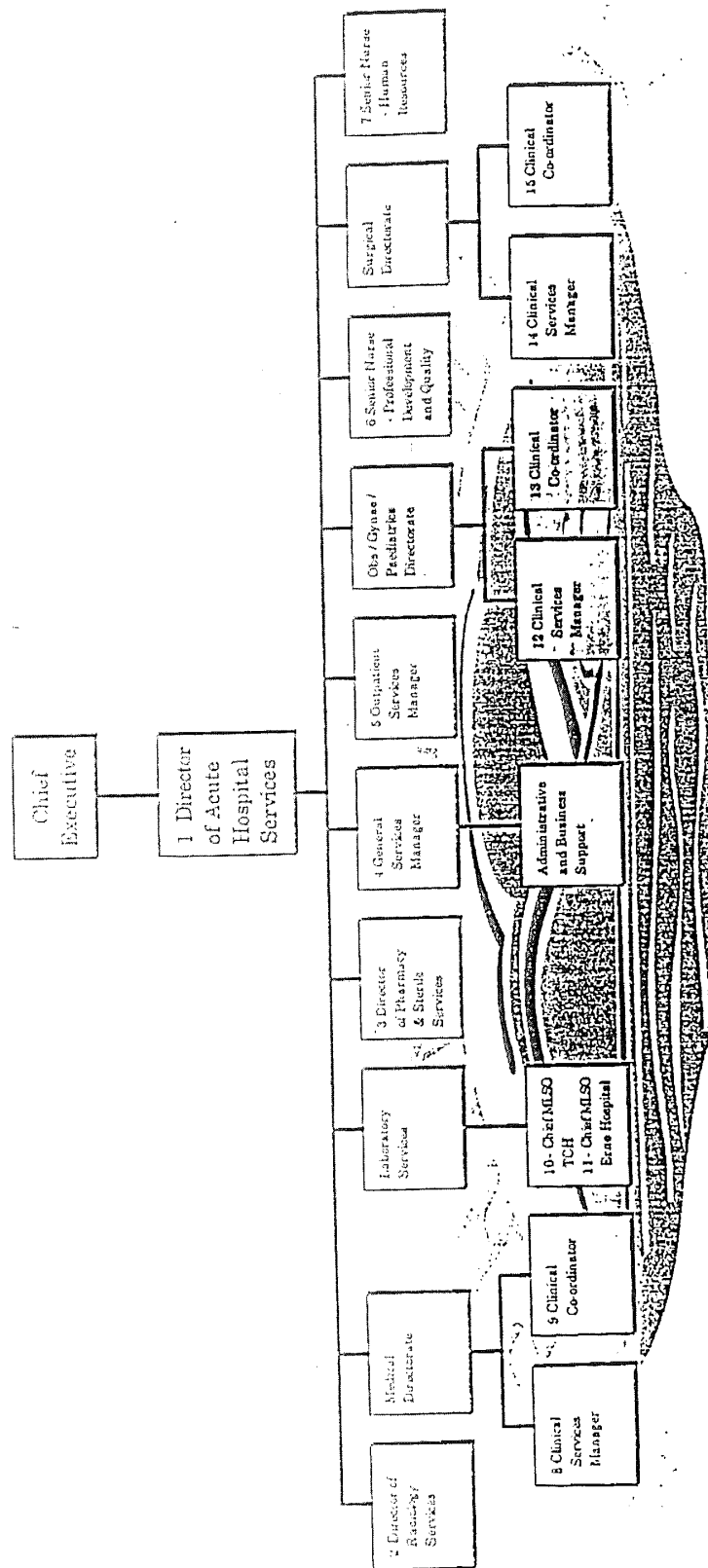
CONSOG

SPERRIN LAKE LAND TRUST BOARD



Sperrin Lakeland Health and Social Care Trust

Acute Hospital Services Directorate



HEALTH AND SOCIAL CARE TRUST

PROVISIONAL WORK PROGRAMME

DAY	MORNING	AFTERNOON
Monday	Labour Ward	Labour Ward
Tuesday		A/N Clinic (Erne)
Wednesday	Teaching Round	A/N Clinic (Omagh)
Thursday	Gynae Clinic (Omagh)	Theatre (Erne)
Friday	Day Cases (Omagh) [alternative weeks]	Gynae Clinic (Erne)

*N.B. This is currently being revised with ALL Consultants in the team.

I HAVE READ AND ACCEPT THE ABOVE J
DESCRIPTION

SIGNED.....
DATE.....

C'ONSOG.