

Diagram of myelin sheath

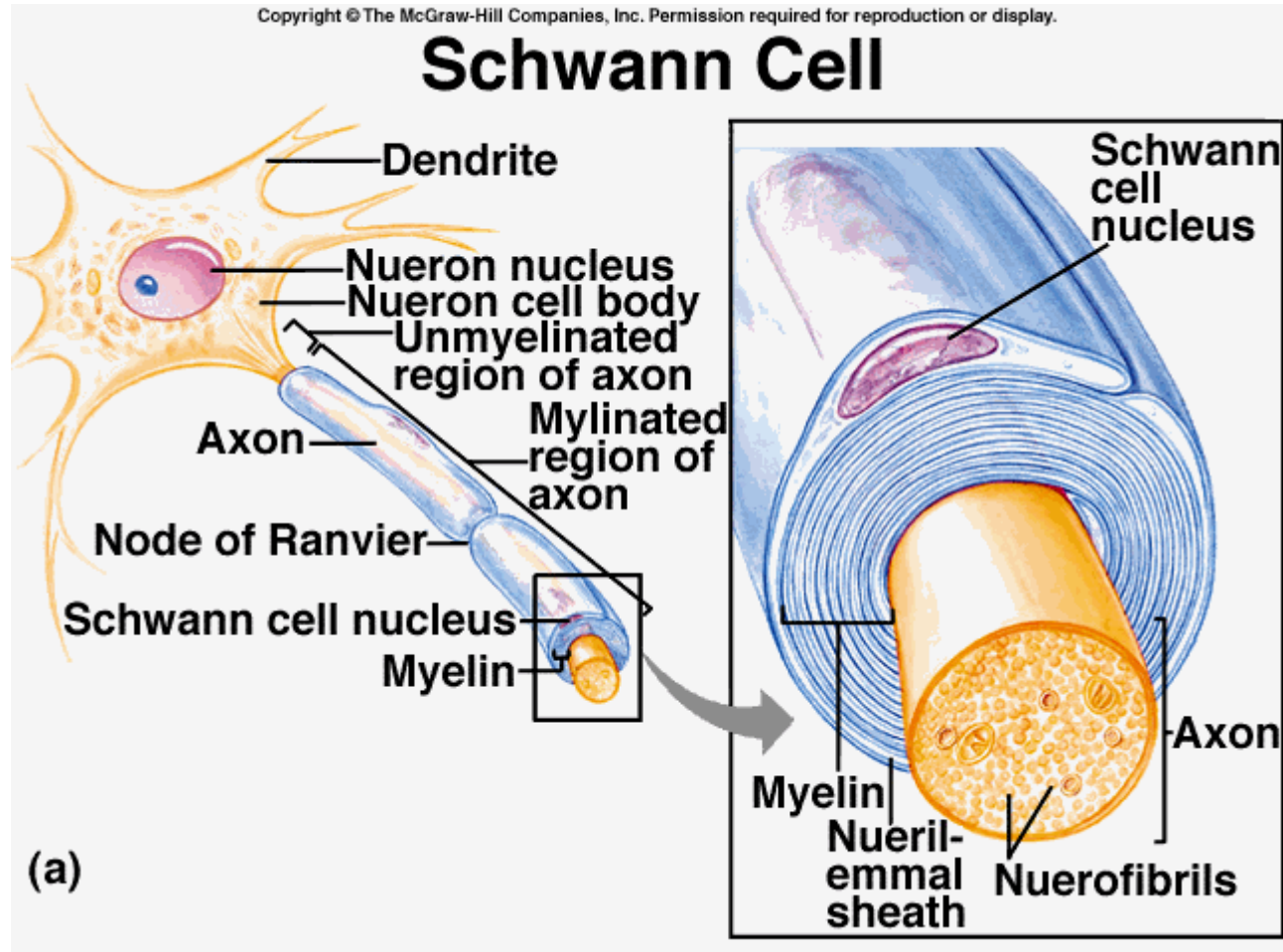
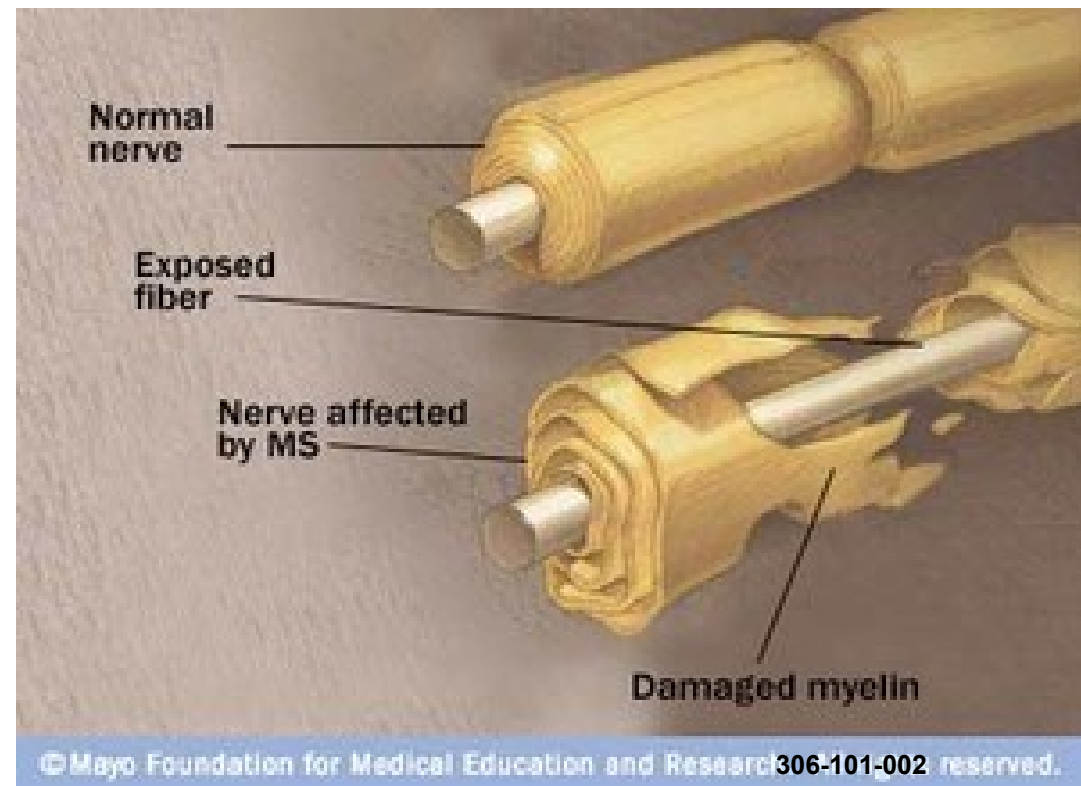
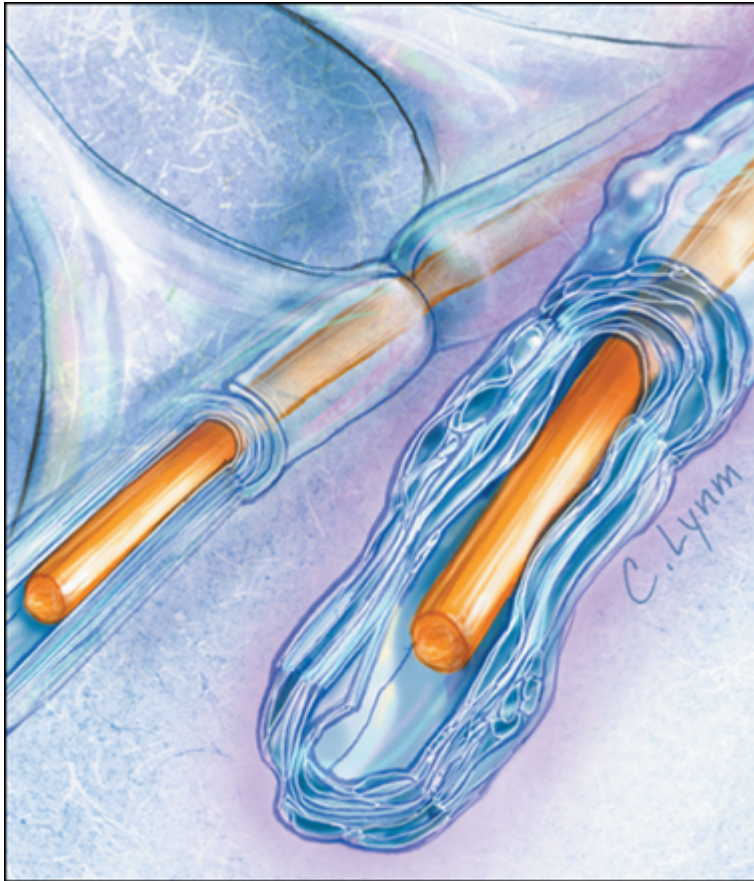


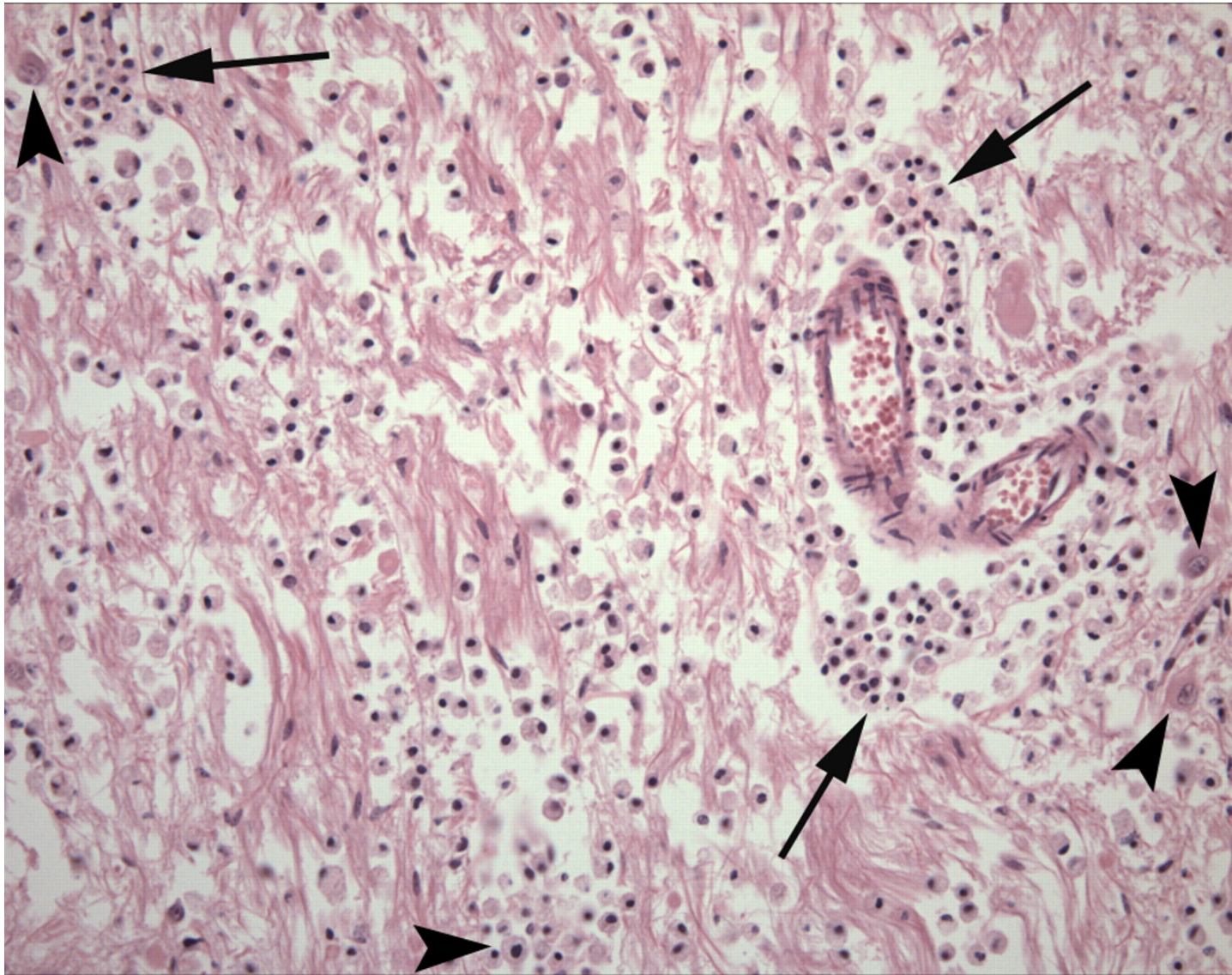
Diagram of myelin sheath (left) and damaged myelin sheath in MS



Central pontine myelinolysis



Figure 4b. (a) Photograph of a gross slice through the pons shows a symmetric, soft, tan lesion (arrow), findings indicative of central pontine myelinolysis.



Howard S A et al. Radiographics 2009;29:933-938

RadioGraphics

AS - INQ

306-101-004