



P E R S O N N E L
M A N A G E M E N T

Telephone: [REDACTED]
Fax: [REDACTED]

From: PATRICIA BLACKER

cc

Date: 5 July 1996

MR HP SIMPSON DHSS HQ
UN GR4(04)
PERF REV-SECNDRY CARE DTR
DUNDONALD HOUSE
UPPER NEWTOWNARDS ROAD
BELFAST BT4 3SU

To: Heads of Branches

DEPARTMENTAL ORGANISATION CHART

You will recall that in April last following the outcome of the Senior Management Review (SMR) Personnel Management Branch issued an organisation chart down to Grade 7 level only for both the Health and Social Policy Group and HSS Executive.

It was proposed at that time to produce an updated overall Departmental Organisation Chart down to DP level when all the changes resulting from the SMR would be in place.

This exercise has now been completed and I enclose a copy for your information. This should be copied and circulated to your staff as required.

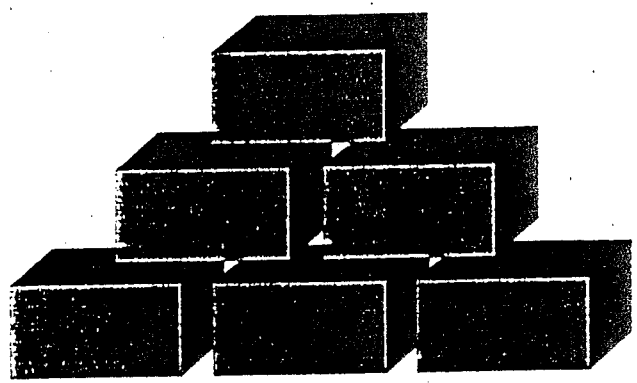
PMB will issue regular updates to the Chart as and when personnel and/or functional changes occur. With this in mind I should be grateful if you would let [REDACTED] Room E3.10, Castle Buildings, [REDACTED] know of these at the earliest possible opportunity.

Patricia Blacker

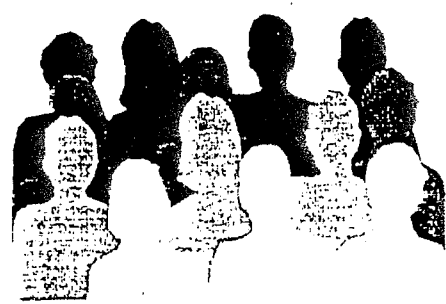
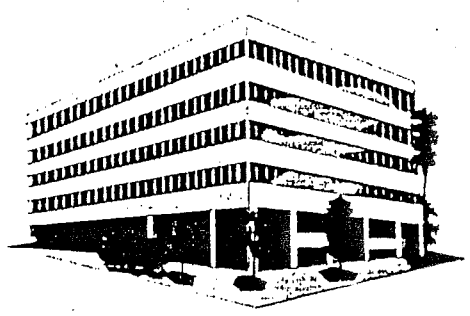
Enc



DEPARTMENT OF HEALTH & SOCIAL SERVICES



ORGANISATION CHART



INDEX

| | Page |
|---|------|
| DEPARTMENT OF HEALTH AND SOCIAL SERVICES (CORE DEPARTMENT) | 1 |
| PROFESSIONAL GROUPS | 2 |
| DEPARTMENT OF HEALTH AND SOCIAL SERVICES AGENCIES | 3 |
| CENTRAL MANAGEMENT & SOCIAL SECURITY POLICY GROUP | |
| AUDIT & CENTRAL ADJUDICATION SERVICE | 4 |
| CENTRAL INITIATIVE AND MANAGEMENT SERVICE DIVISION | 5 |
| FINANCE AND AGENCY CO-ORDINATION DIRECTORATE | 6 |
| INFORMATION TECHNOLOGY DIVISION | 7 |
| PERSONNEL MANAGEMENT DIVISION | 8 |
| SOCIAL SECURITY POLICY & LEGISLATION DIVISION | 9 |
| HEALTH AND SOCIAL POLICY GROUP | |
| HEALTH AND SOCIAL POLICY UNIT | 10 |
| LEGISLATION UNIT | 11 |
| POLICY DEVELOPMENT AND REVIEW UNIT | 12 |
| STRATEGY AND INTELLIGENCE GROUP (1) | 13 |
| STRATEGY AND INTELLIGENCE GROUP (2) | 14 |
| VOLUNTARY ACTIVITY UNIT | 15 |
| HEALTH AND SOCIAL SERVICES EXECUTIVE | |
| OFFICE OF THE CHIEF EXECUTIVE | 16 |
| CHILD AND COMMUNITY CARE DIRECTORATE | 17 |
| DIRECTORATE OF INFORMATION SYSTEMS | 18 |
| FINANCIAL MANAGEMENT DIRECTORATE | 19 |
| PERFORMANCE REVIEW AND SECONDARY CARE DIRECTORATE | 20 |
| PRIMARY CARE AND PURCHASING DEVELOPMENT DIRECTORATE | 21 |
| TRUST AND HUMAN RESOURCES DIRECTORATE | 22 |
| DHSS - MEDICAL AND ALLIED SERVICES | 23 |
| SOCIAL SERVICES INSPECTORATE | 24 |
| NURSING AND MIDWIFERY ADVISORY GROUP | 25 |
| PHARMACEUTICAL ADVICE AND SERVICES | 26 |
| DENTAL SERVICES | 27 |
| NON-DEPARTMENTAL PUBLIC BODIES | |
| MENTAL HEALTH COMMISSION | 28 |
| INDEPENDENT TRIBUNAL SERVICE | 29 |

DEPARTMENT OF HEALTH AND SOCIAL SERVICES (CORE DEPARTMENT)

MR F A ELLIOTT
Permanent Secretary

CENTRAL MANAGEMENT AND
SOCIAL SECURITY POLICY
GROUP

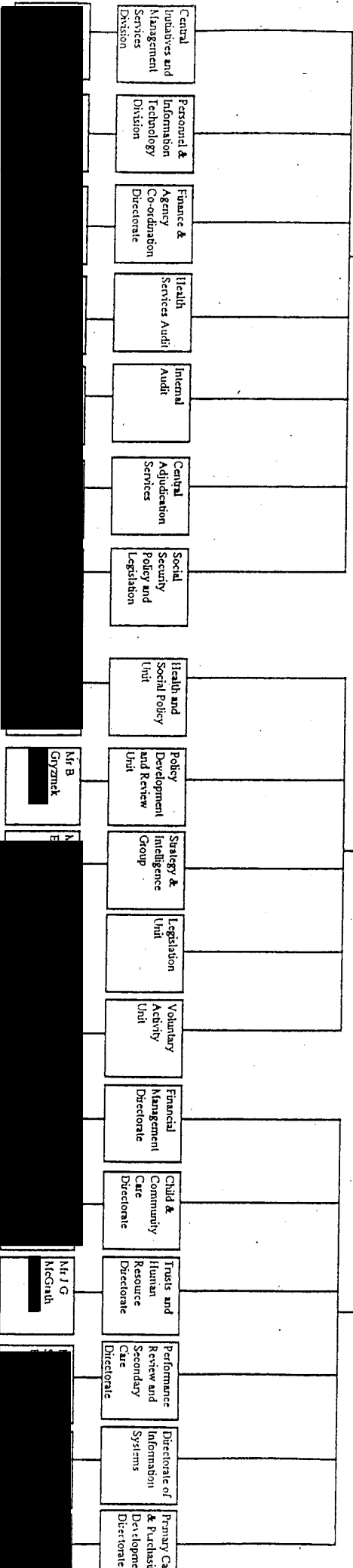
MR P J SMALL
Deputy Secretary (PEFO)

HEALTH & SOCIAL POLICY
GROUP

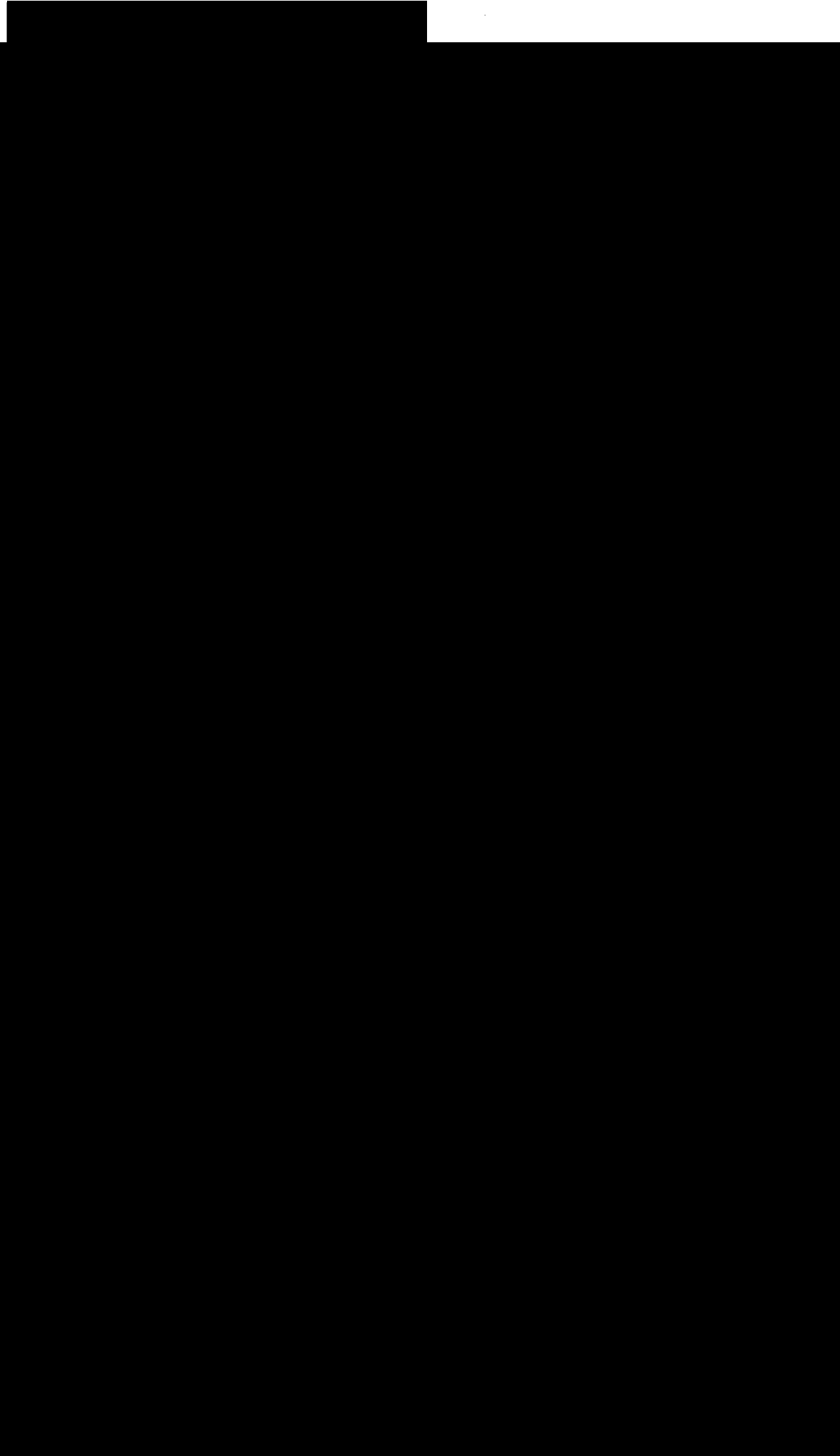
DR J J M HARBISON
Deputy Secretary

HEALTH & SOCIAL SERVICES
EXECUTIVE

MR J G HUNTER
Chief Executive



DEPARTMENT OF HEALTH AND SOCIAL SERVICE AGENCIES

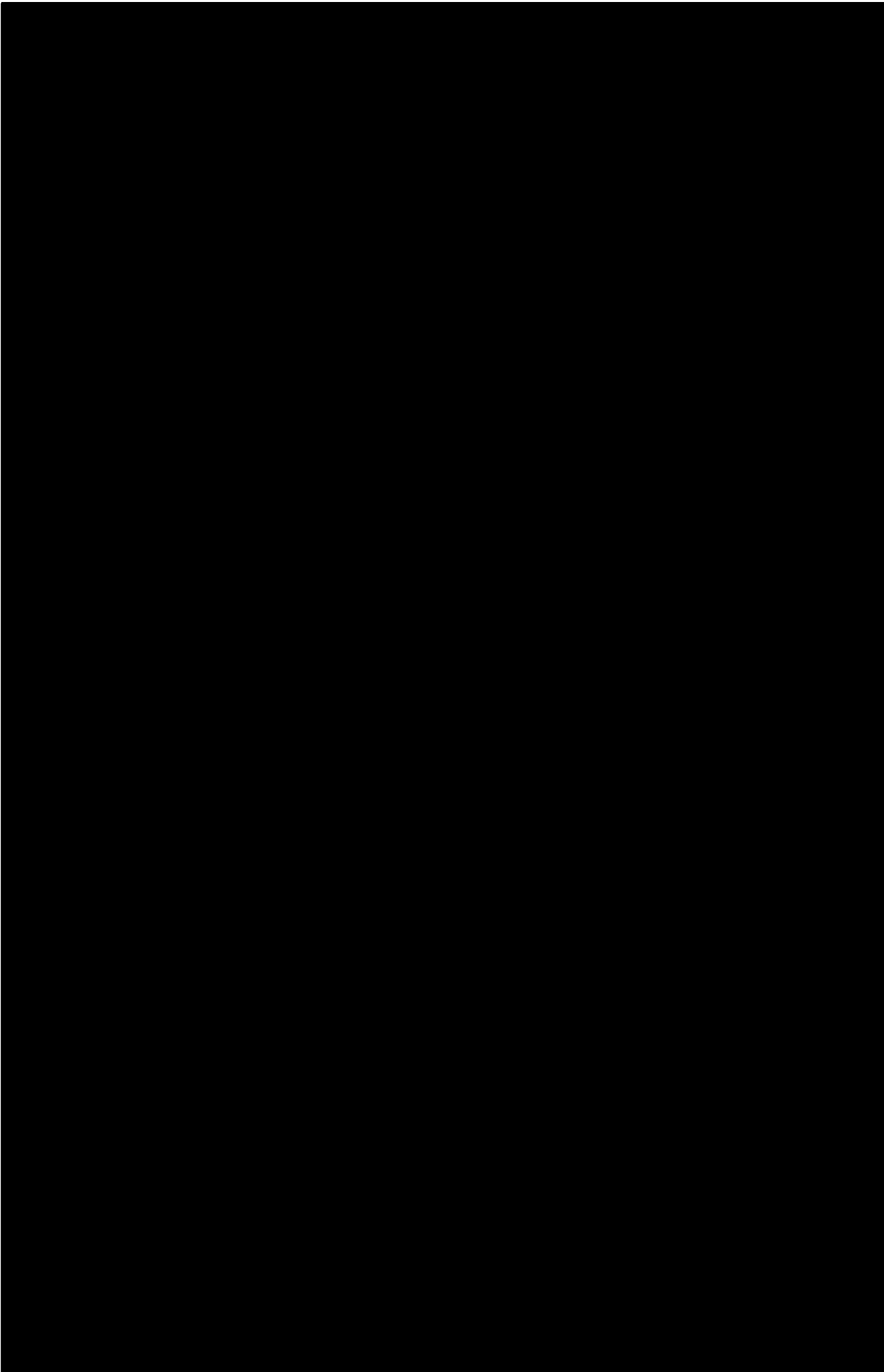


CENTRAL MANAGEMENT AND SOCIAL SECURITY POLICY GROUP

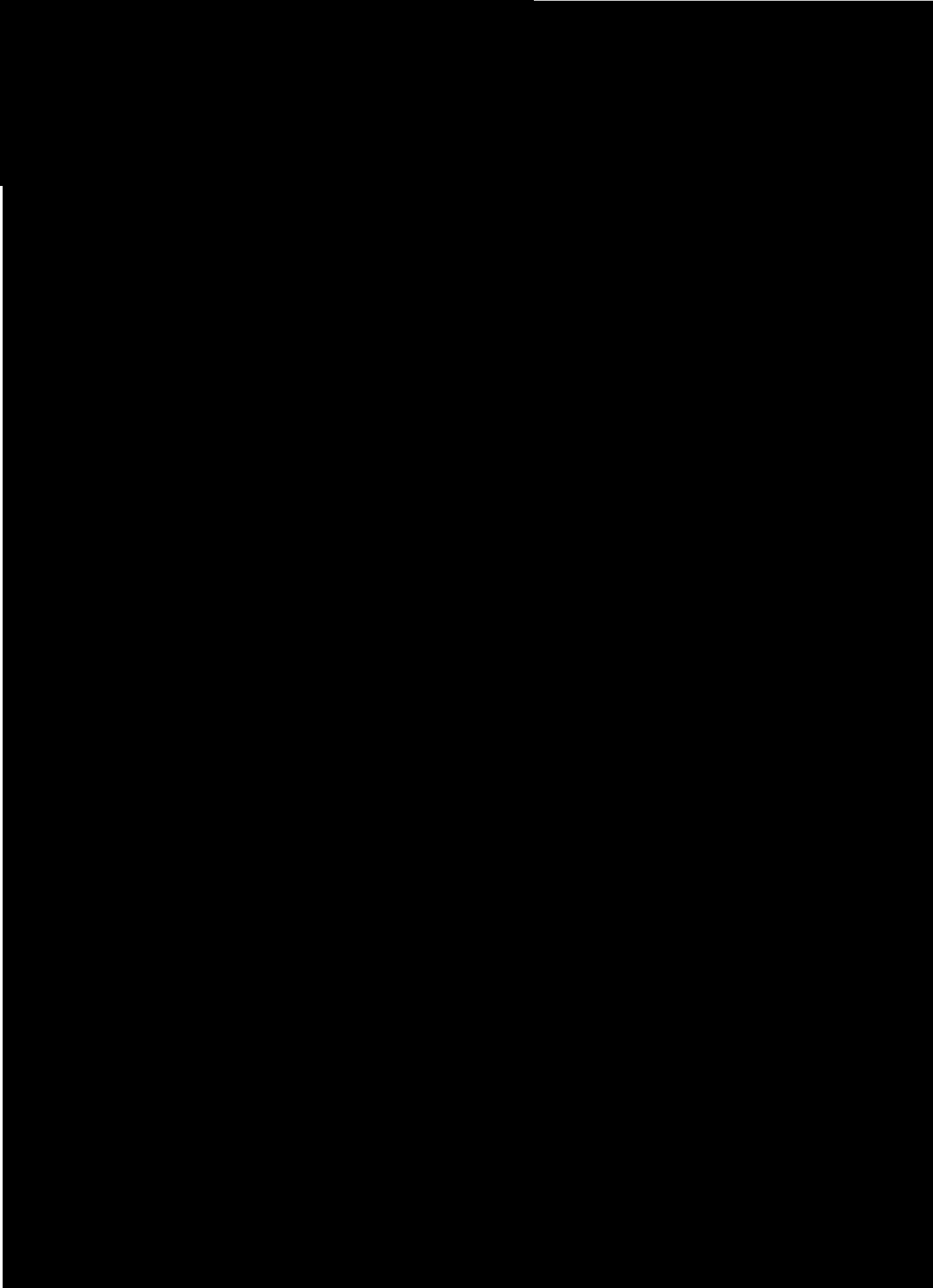
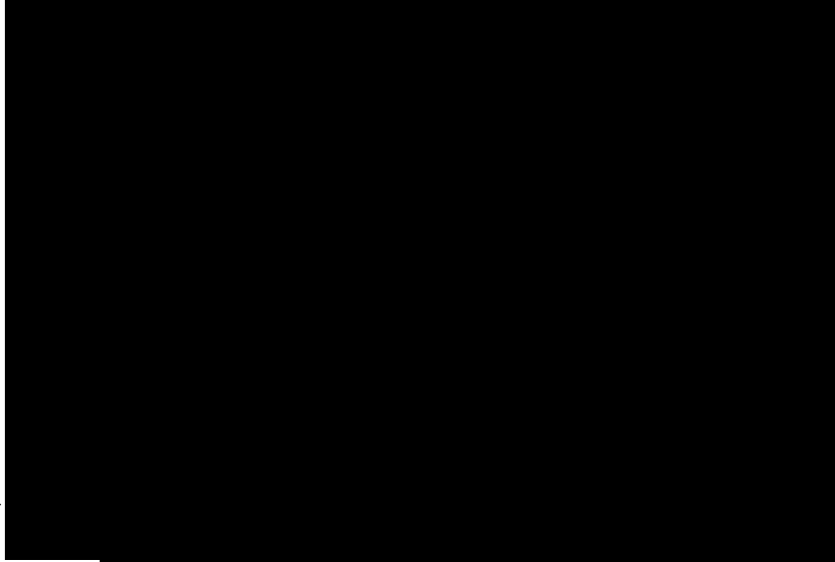
- Considering each year whether contracts should be renewed
- (b) Securing a credible programme of Value for Money audit work, selected from studies undertaken by the Audit Commission and the production of Northern Ireland summary reports by the Directorate

administration.

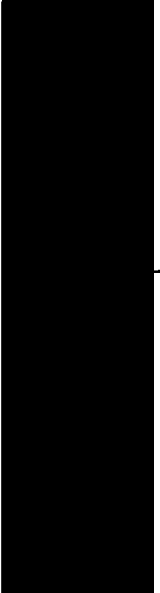
CENTRAL MANAGEMENT AND SOCIAL SECURITY POLICY GROUP



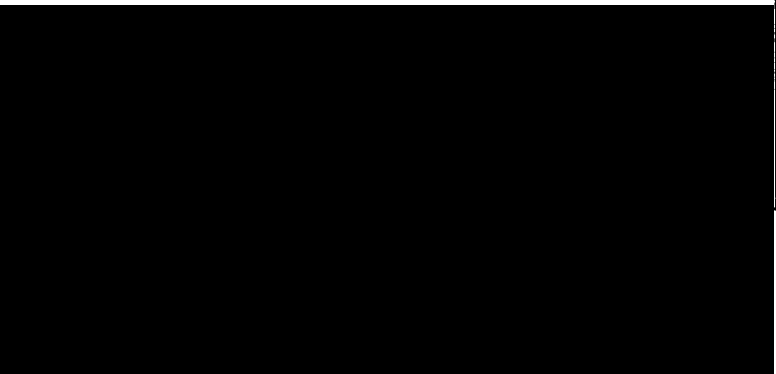
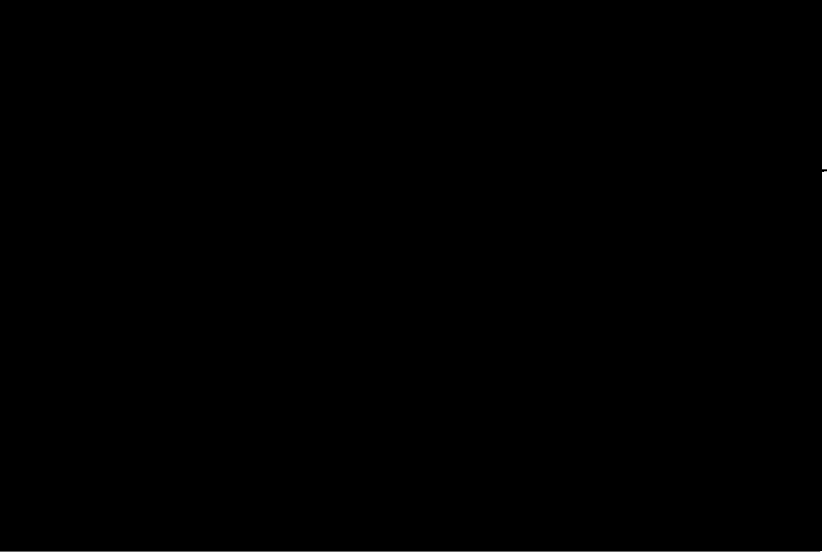
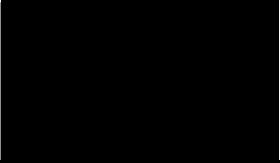
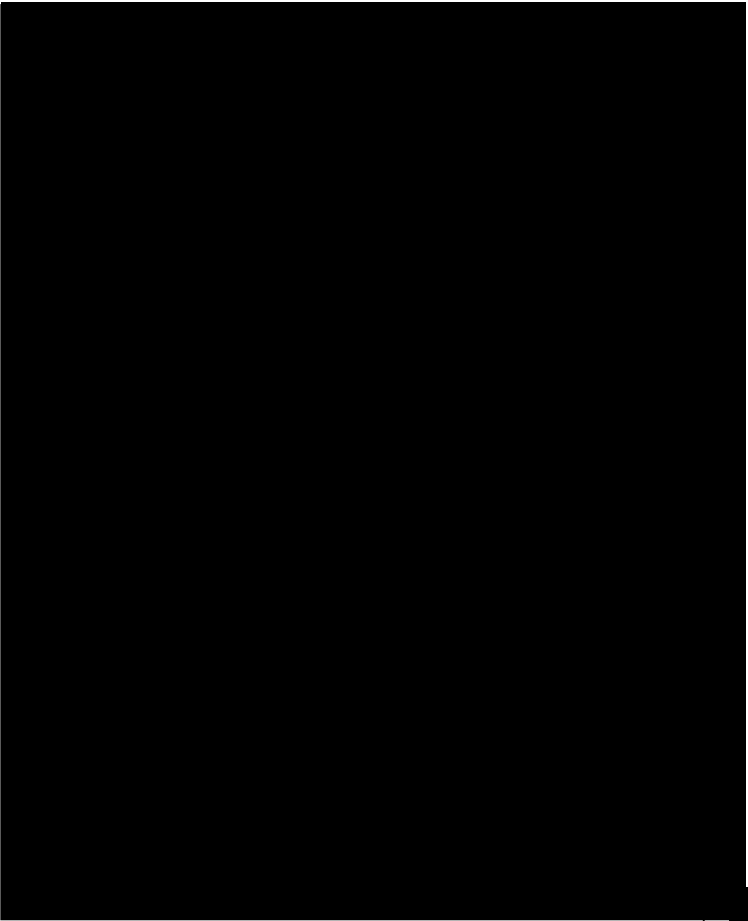
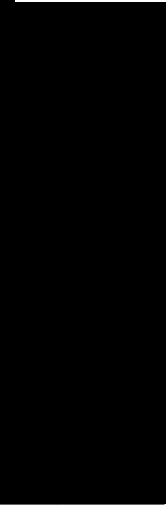
CENTRAL MANAGEMENT AND SOCIAL SECURITY POLICY GROUP



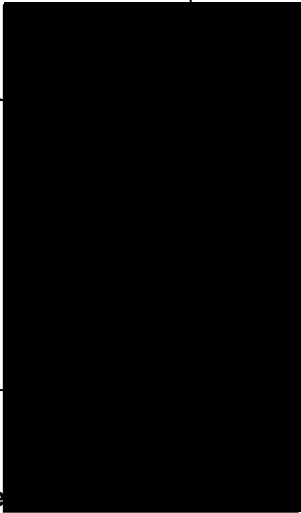
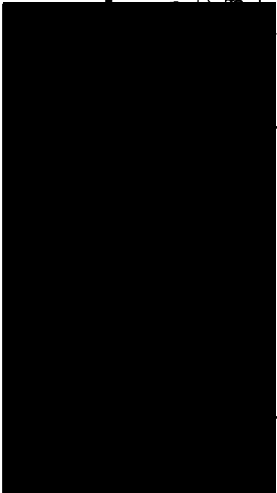
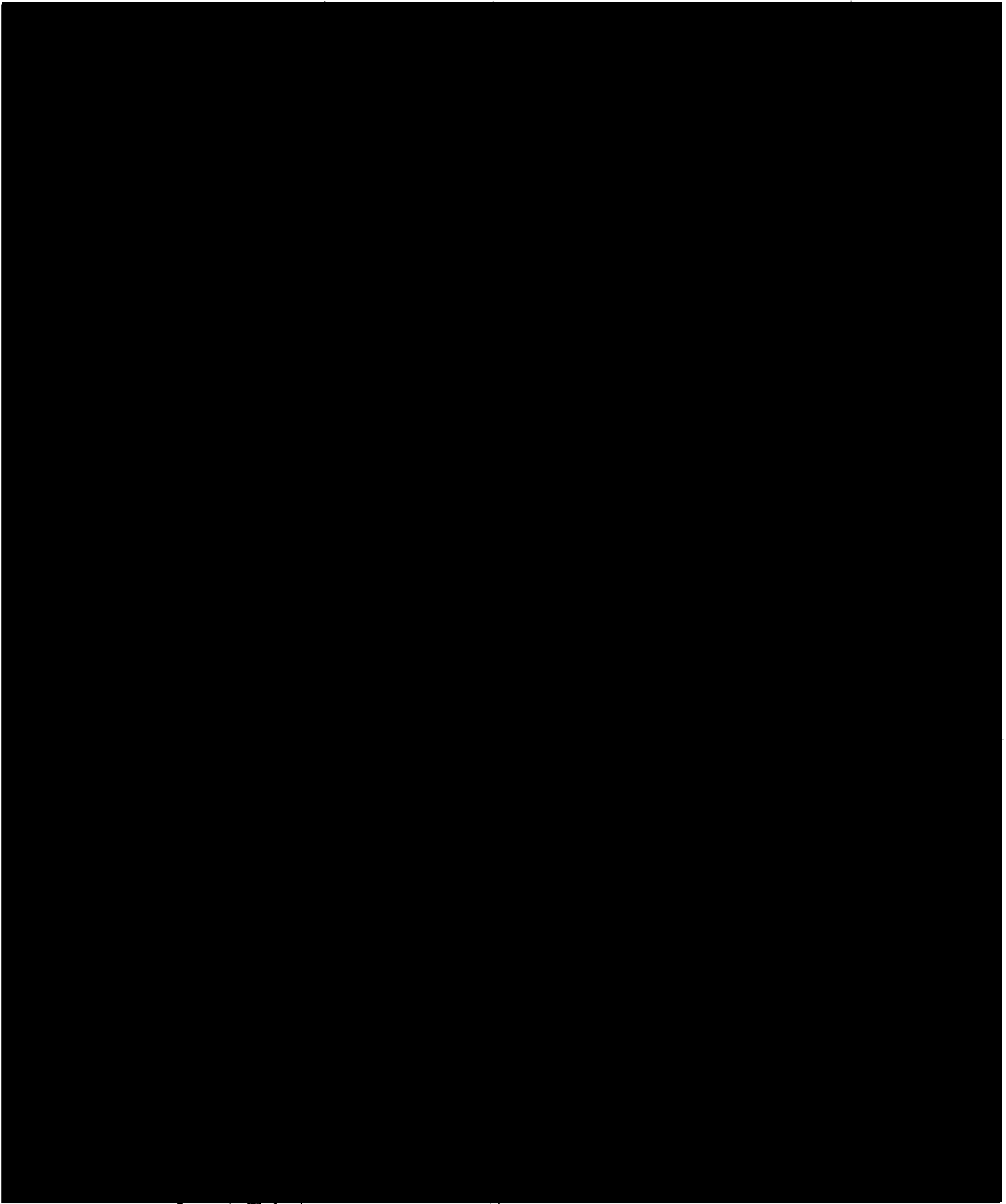
CENTRAL MANAGEMENT AND SOCIAL SECURITY POLICY GROUP



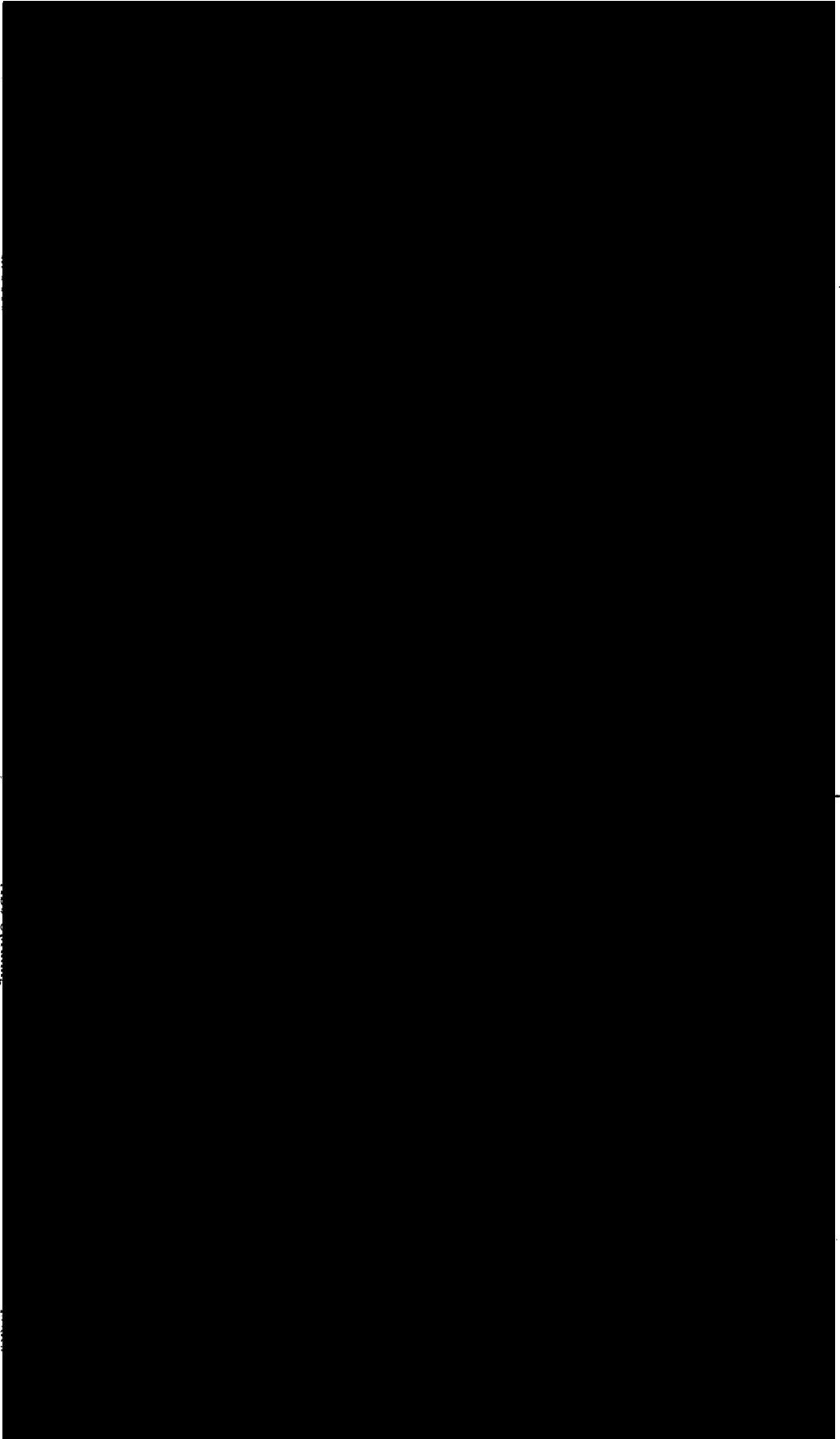
INFORMATION TECHNOLOGY GROUP



CENTRAL MANAGEMENT AND SOCIAL SECURITY POLICY GROUP

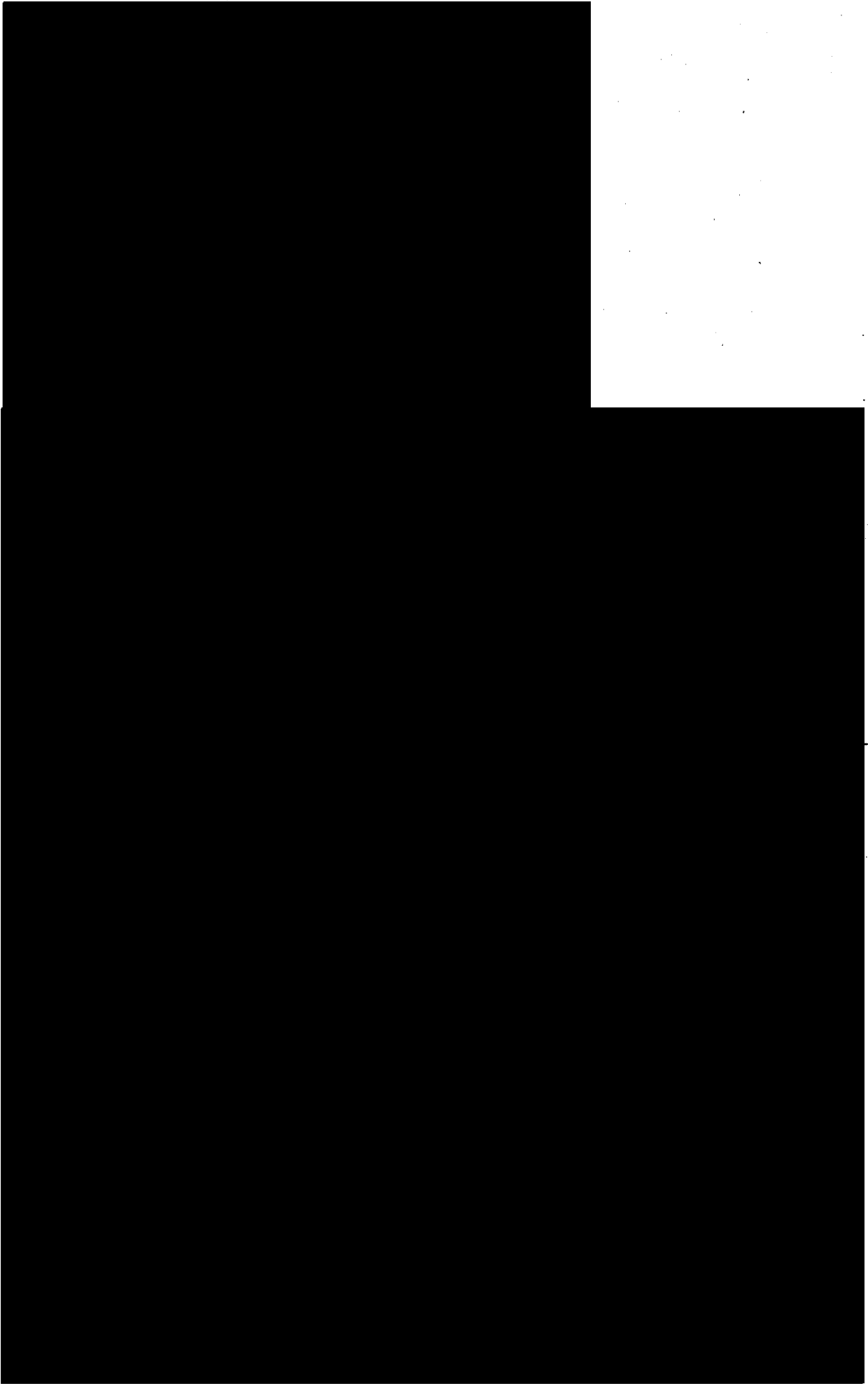


CENTRAL MANAGEMENT AND SOCIAL SECURITY POLICY GROUP

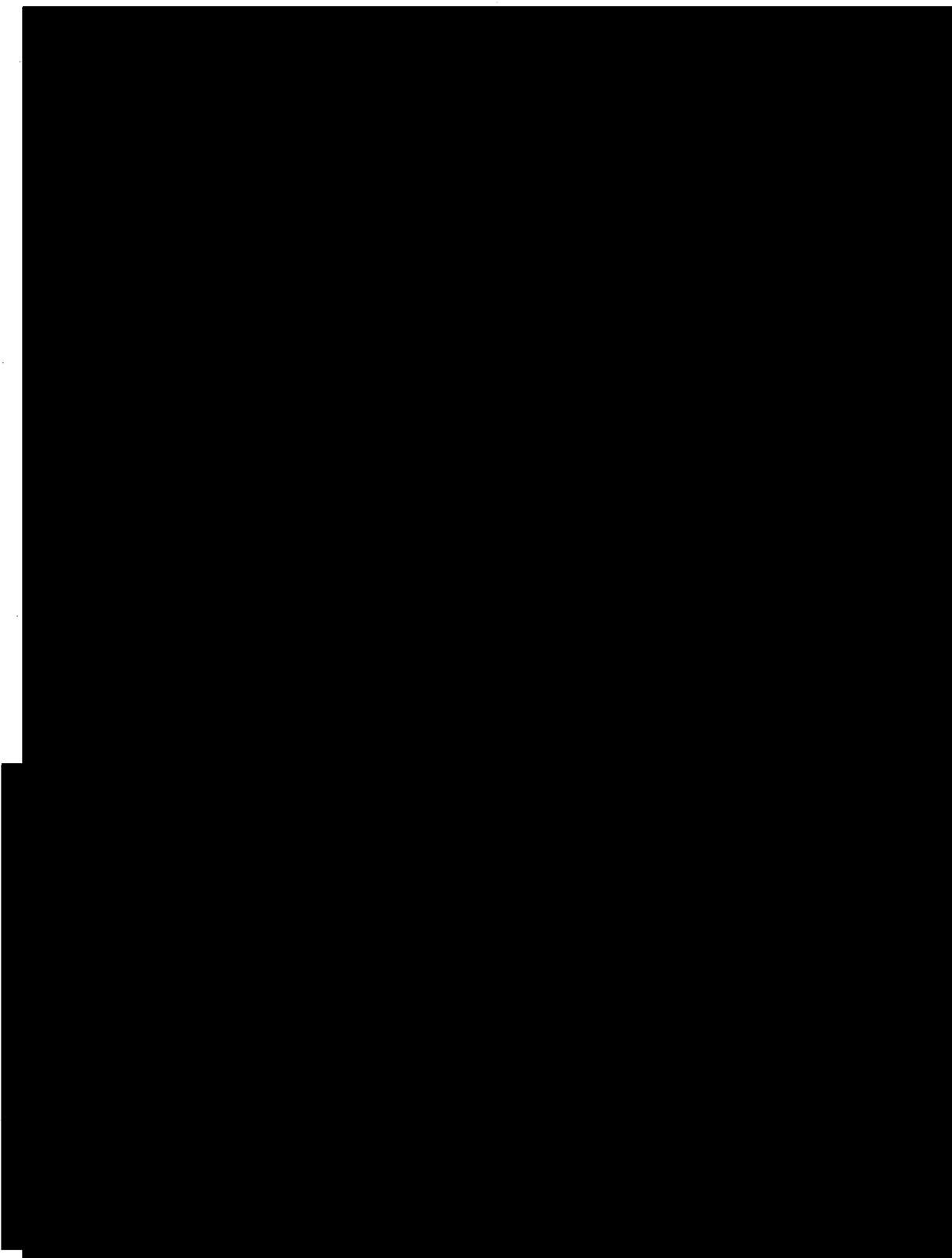


DED from BEN

HEALTH AND SOCIAL POLICY GROUP



HEALTH AND SOCIAL POLICY GROUP



HEALTH AND SOCIAL POLICY GROUP

DR J J M HARBISON
Deputy Secretary

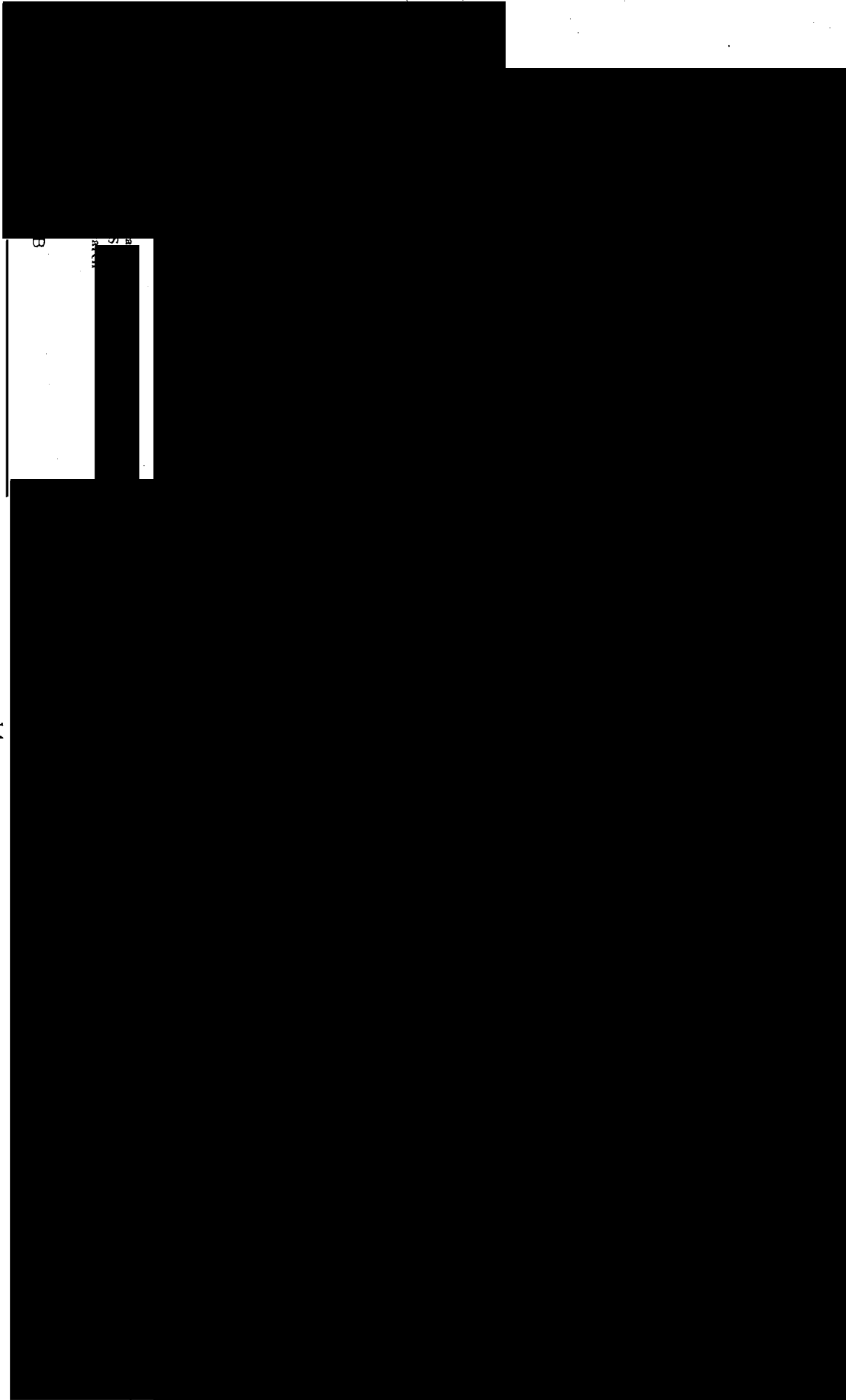
POLICY DEVELOPMENT AND REVIEW UNIT

Mr B J Grzymek
Head of Unit (Grade 7)

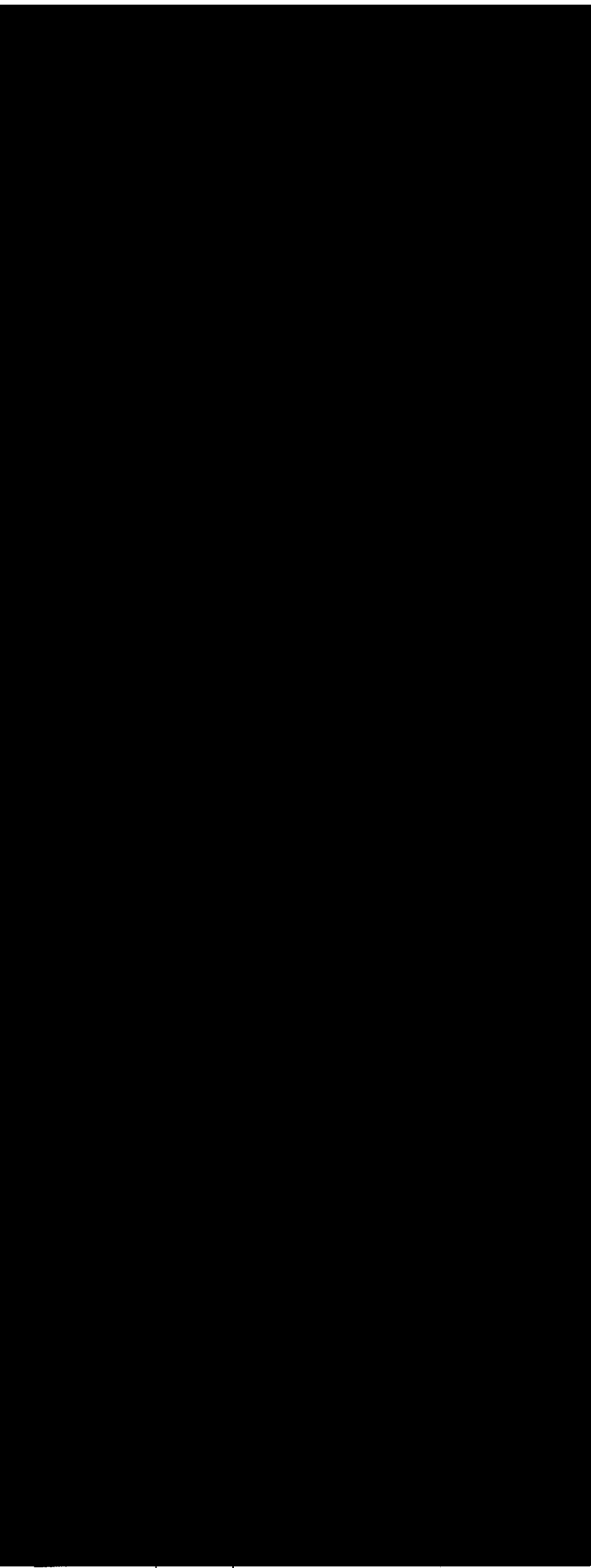
Mr W J Dukelow

HEALTH AND SOCIAL POLICY GROUP

HEALTH AND SOCIAL POLICY GROUP



HEALTH AND SOCIAL POLICY GROUP



HEALTH AND SOCIAL SERVICES EXECUTIVE

MR J G HUNTER
Chief Executive

OFFICE OF THE CHIEF EXECUTIVE

Staff Officer

Provide direct support to the Chief Executive in establishing and setting the corporate objectives and priorities for the HSS. Provision of secretariat to meetings of the HSSE and to the Chief Executive/General Managers Group. Circulation of staff within the HSSE and HSPG of minutes of the 4 HSSBS, HSSCS meetings, GB circulars and various other guidance. Completion of HSS section of Annual Departmental Report. Allocation of DRC Budgets within the HSSE.

HEALTH AND SOCIAL SERVICES EXECUTIVE

MR J G HUNTER
Chief Executive

CHILD AND COMMUNITY CARE DIRECTORATE

Child Care/Family

General Community Care/Elderly Care

Disability and Mental Health

Children Order Unit

GAL/Adoption

Mrs E R J Campbell

Mr A F Sharpe

Mr H J Farren

Mr M R Hendra
DP

Mr C J McElinn
DP

Mr S C Popplesstone
DP

Miss S Barfoot
DP

Mr D H McGowan
DP

Mr J J Farde
DP

Child care and child protection. Pre-employment Consultancy Service. Grants to, and liaison with, Voluntary Child care organisations.

Services for elderly people including those with dementia. Residential Care and Nursing Homes legislation. Registered Homes Tribunal secretariat. Community Care Direct Payments. Support for appropriate voluntary organisations. Carers' Issues. Co-ordination of annual Keep Warm Keep Well Campaign.

Implementation of "People First" community care reforms, general issues and financial implications. Contracting issues and development of the mixed economy of care. Monitoring of Assessment and Care Management. Charges for residential care; policy, regulations, casework and guidance. Charges for non-residential personal social services. Continuing care: interface between health and social care.

Policy, legislation and health and social services for people with a physical or learning disability, or mentally ill people. Voluntary sector issues in the physical disability, learning disability and mental health fields. Mental Health Commission, Mental Health Review Tribunal and Northern Ireland Hospital Advisory Service.

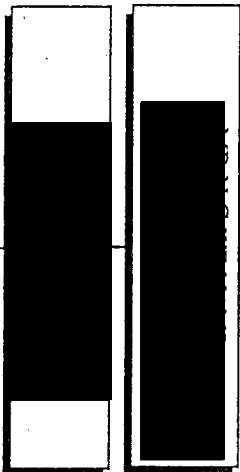
Preparation of subordinate Legislation and guidance associated with the Children (ND) Order. Arrangements for Implementation of Order and liaison with other Departments on the Order.

Policy, primary and subordinate legislation in relation to adoption. Casework on intercountry adoption guidance to adoption agencies. Development of Guardian ad Litem Service.

HEALTH AND SOCIAL SERVICES EXECUTIVE

MR J G HUNTER
Chief Executive

DIRECTORATE OF INFORMATION SYSTEMS



CO-ORDINATION &
MONITORING

MR G N HARRISON

INFRASTRUCTURE UNIT

MR H S JOHNSTON

GUIDANCE AND PLANNING

MRS P M GAYN

DELIVERY & SUPPORT

MR J J DADDY

DELIVERY & SUPPORT
PPS

MR N J ABBOTT



Support Initiative

HEALTH AND SOCIAL SERVICES EXECUTIVE

MR J G HUNTER
Chief Executive

FINANCIAL MANAGEMENT DIRECTORATE

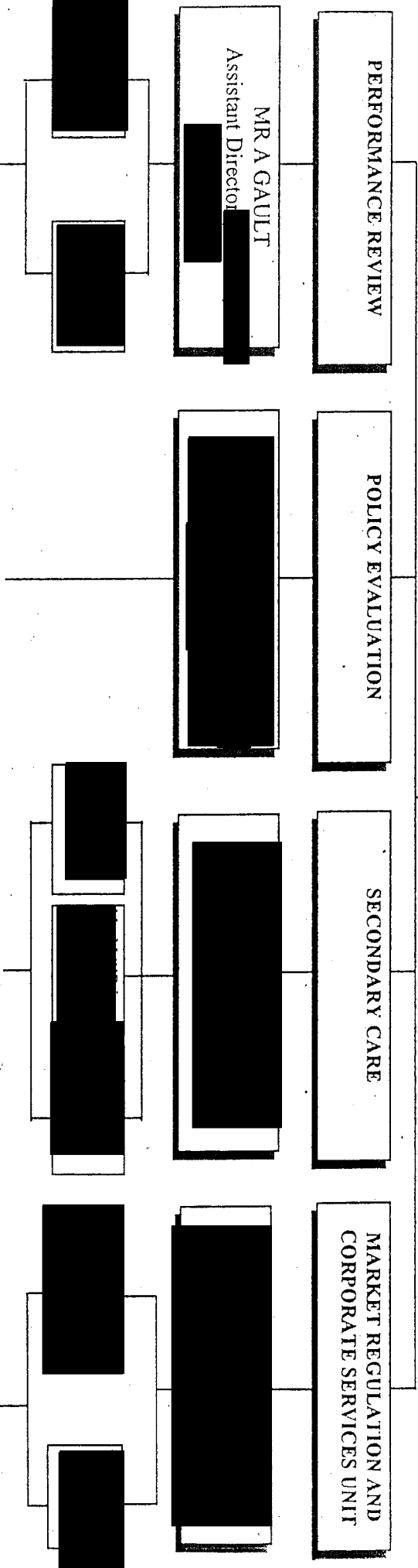
MR B MCGAHAN
Director

HEALTH AND SOCIAL SERVICES EXECUTIVE

MR J G HUNTER
Chief Executive

PERFORMANCE REVIEW AND SECONDARY CARE DIRECTORATE

MR H P SIMPSON
Director



Charter for Patients and Clients. Accountability Review. Management Plan. Corporate Contracts. HISS Complaints Procedures.

Evaluation of Policy in selected HISS areas.

Service related to acute specialists. Maternity - Neonatology - Paediatrics. Waiting Lists - Charter Monitoring - Corporate Monitoring. Acute Hospitals Reorganisation Project. Emergency Admissions. Hospital Travel. Cancer - Hospices - Palliative Care. Renal Services - Organ Donation and Transplantation. Hospital Records - Access to Health Records. Radiological Protection

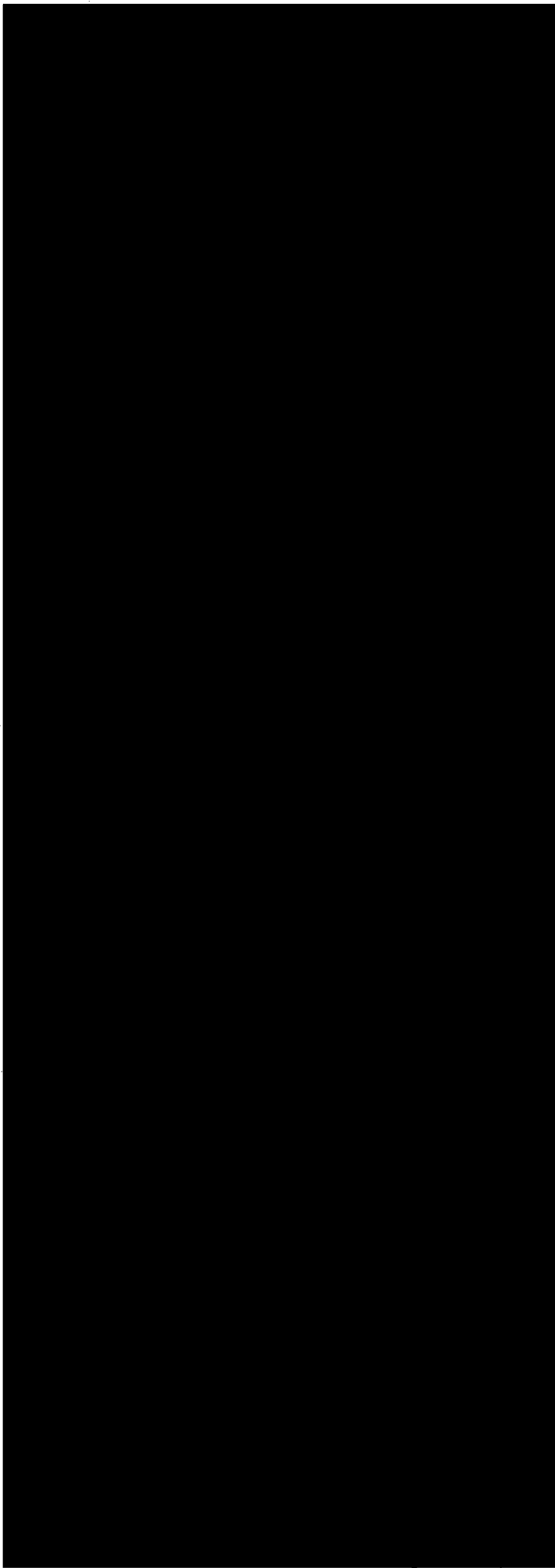
Conciliation/Arbitration on Contract Disputes. Guidance to HSS Boards on matters related to the Development of Contract Process. Review of the Contract Process. HSS Board Management Costs Formula. Appointments to HSS Boards and Councils including Implementation of Nolan Report. Guidance on Policy Appraisal and Fair Treatment. Development of Communications Strategy for HSS. Co-ordination of Arrangements for North/South Health Co-operation Meetings.

HEALTH AND SOCIAL SERVICES EXECUTIVE

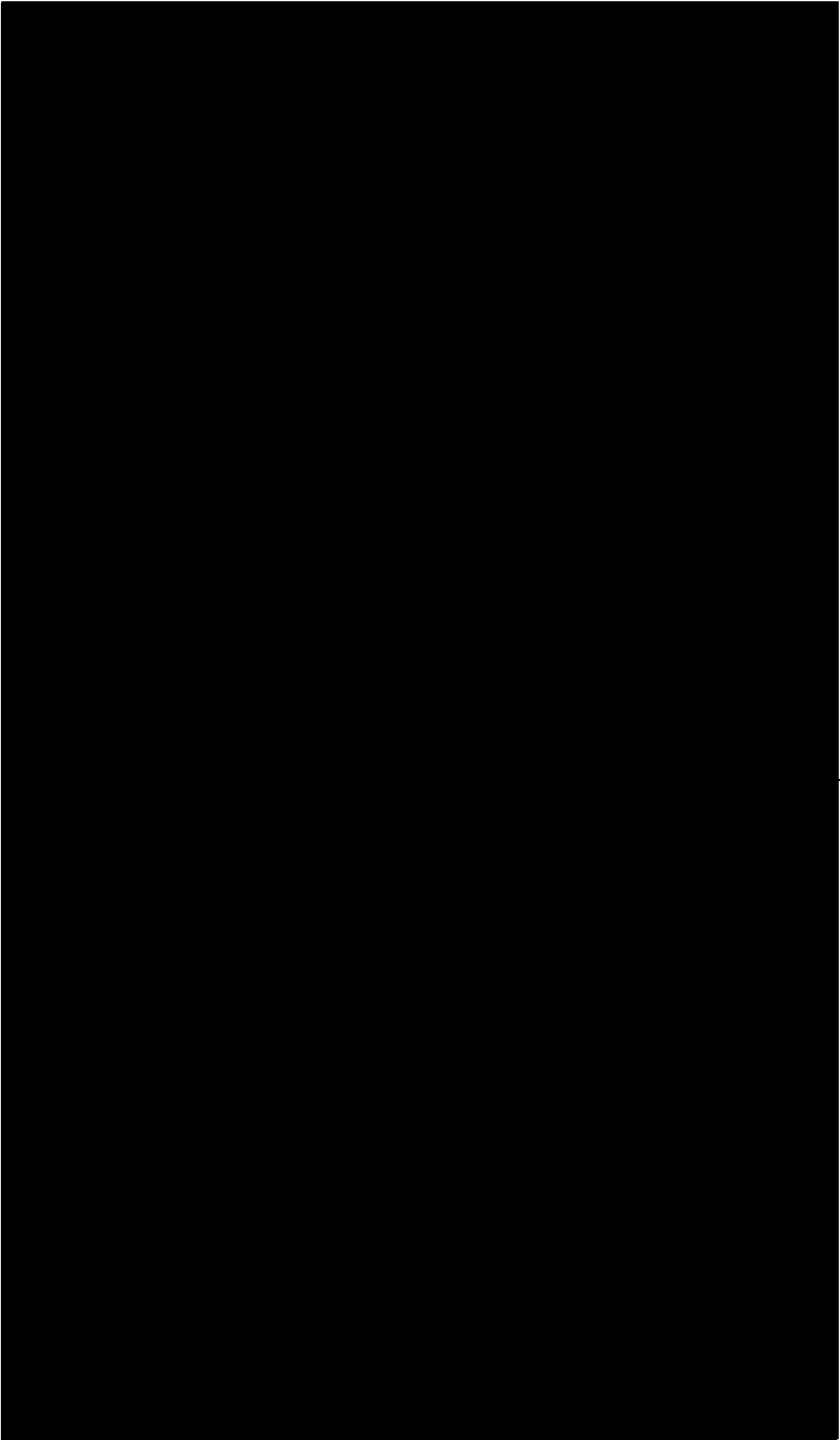
MR J G HUNTER
Chief Executive

PRIMARY CARE AND PURCHASING DEVELOPMENT DIRECTORATE

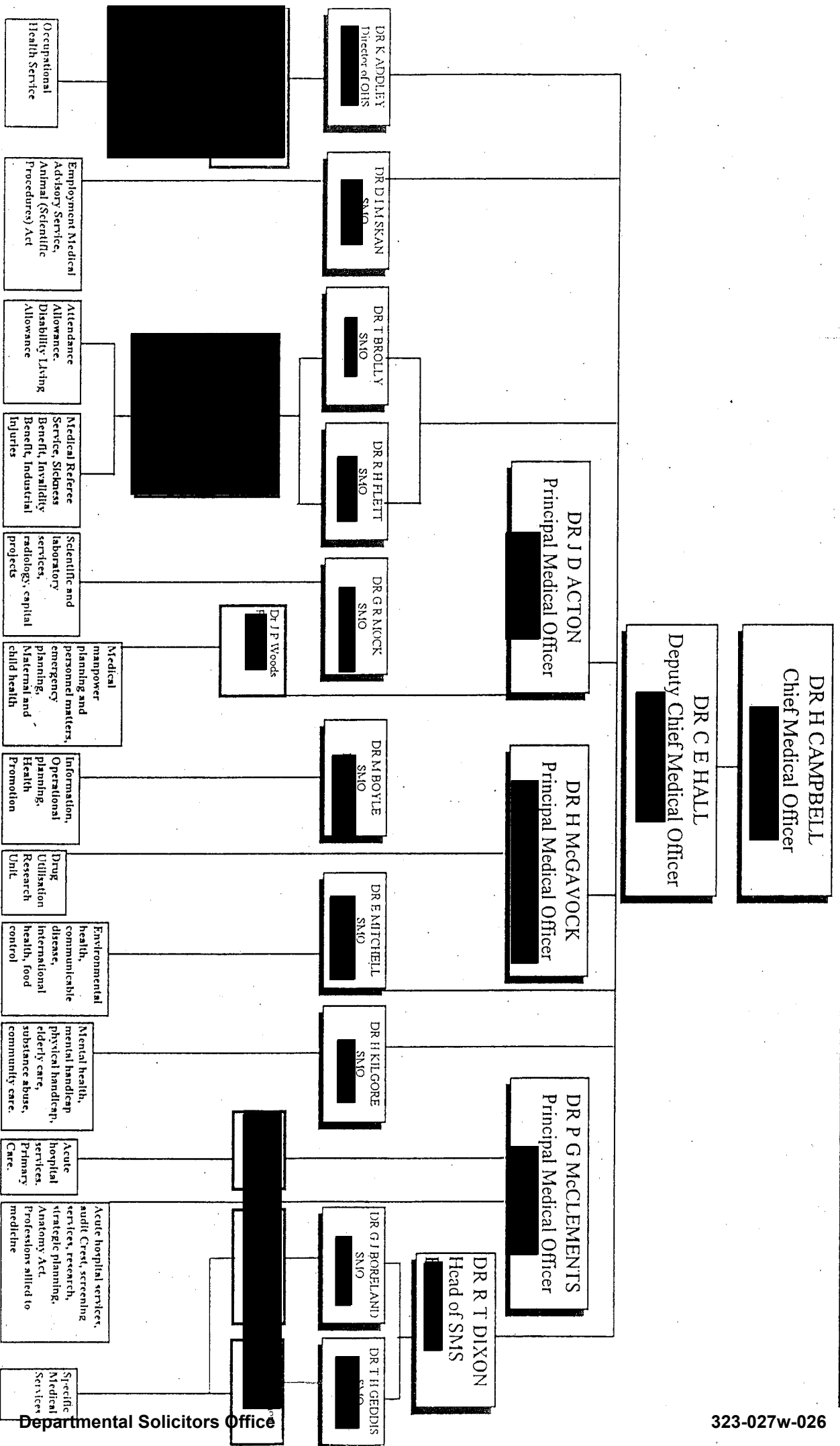
Director



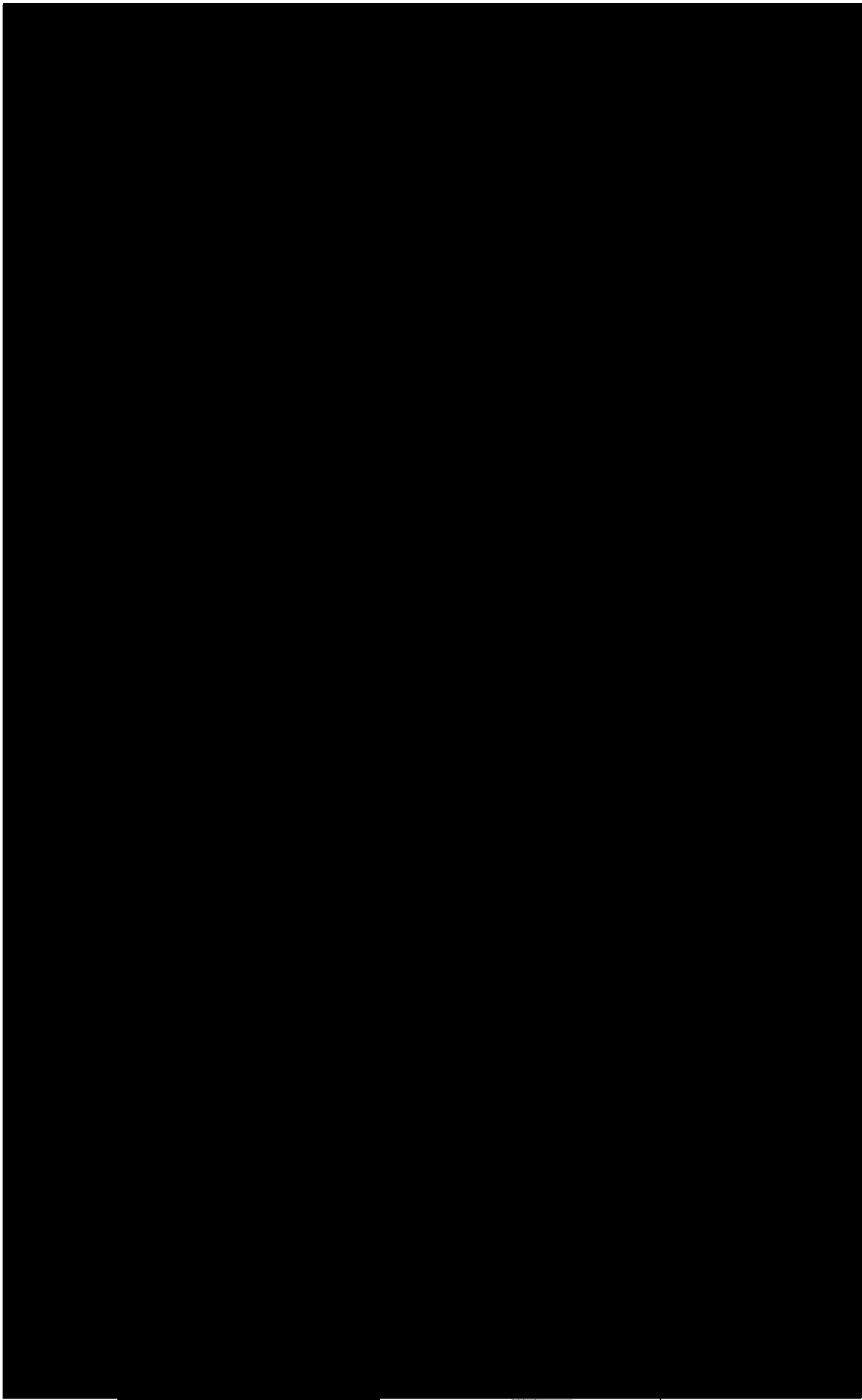
HEALTH AND SOCIAL SERVICES EXECUTIVE



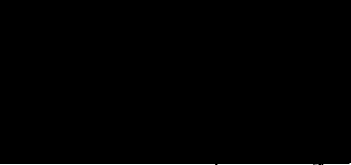
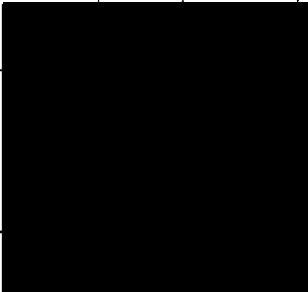
DEPARTMENT OF HEALTH AND SOCIAL SERVICES - MEDICAL AND ALLIED SERVICES



SOCIAL SERVICES INSPECTORATE



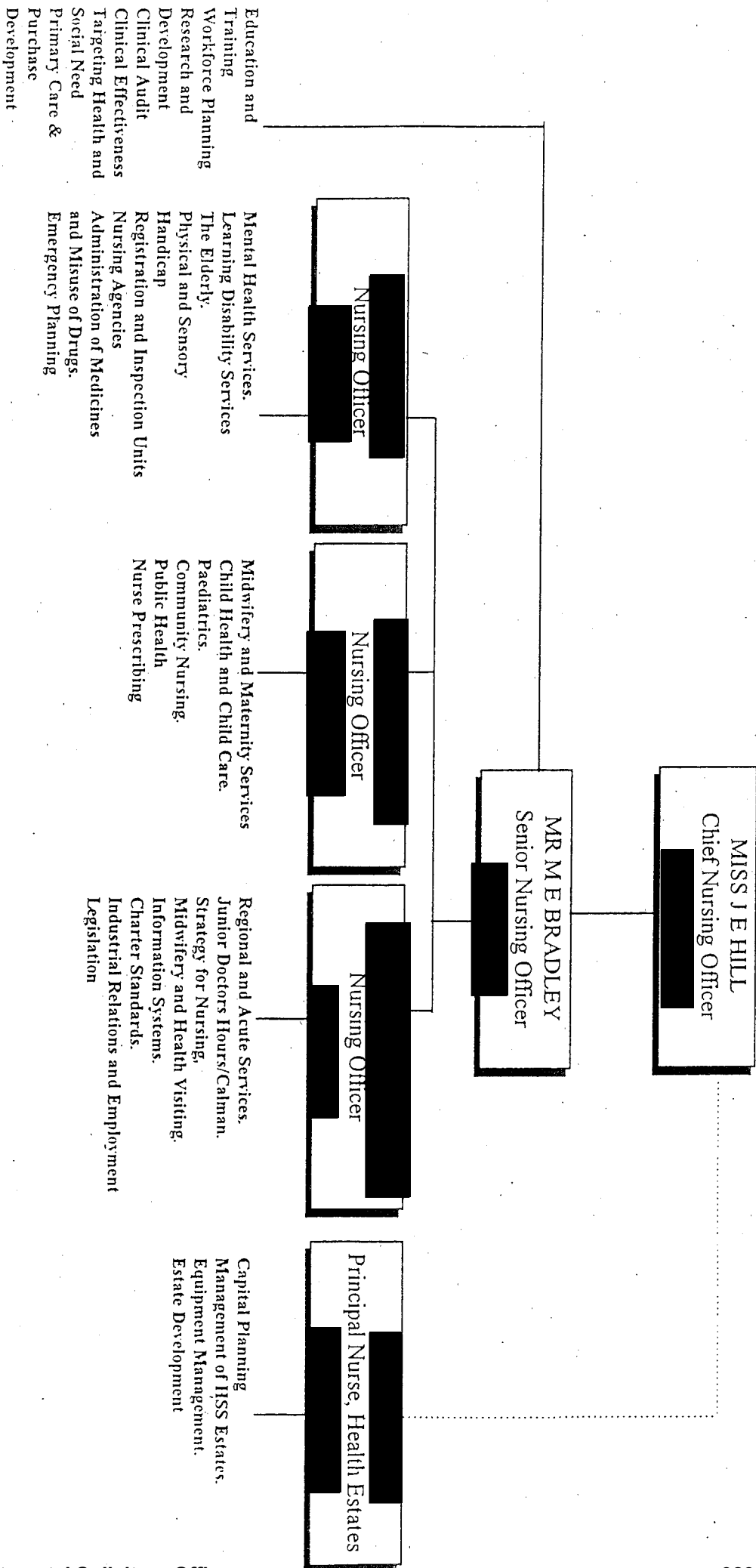
323-027w-027



Probation Services and services for adult offenders. Advice to NPD and contributions to policy development as offender services, training and staff in Criminal Justice System Liaison with voluntary organizations and development on performance indicators

Departmental Director

NURSING AND MIDWIFERY ADVISORY GROUP



PHARMACEUTICAL ADVICE AND SERVICES

DR N C MORROW
Chief Pharmaceutical Officer

DR M MAWHINNEY
Principal Pharmaceutical Officer

DR T J SCOTT
Principal Pharmaceutical Officer

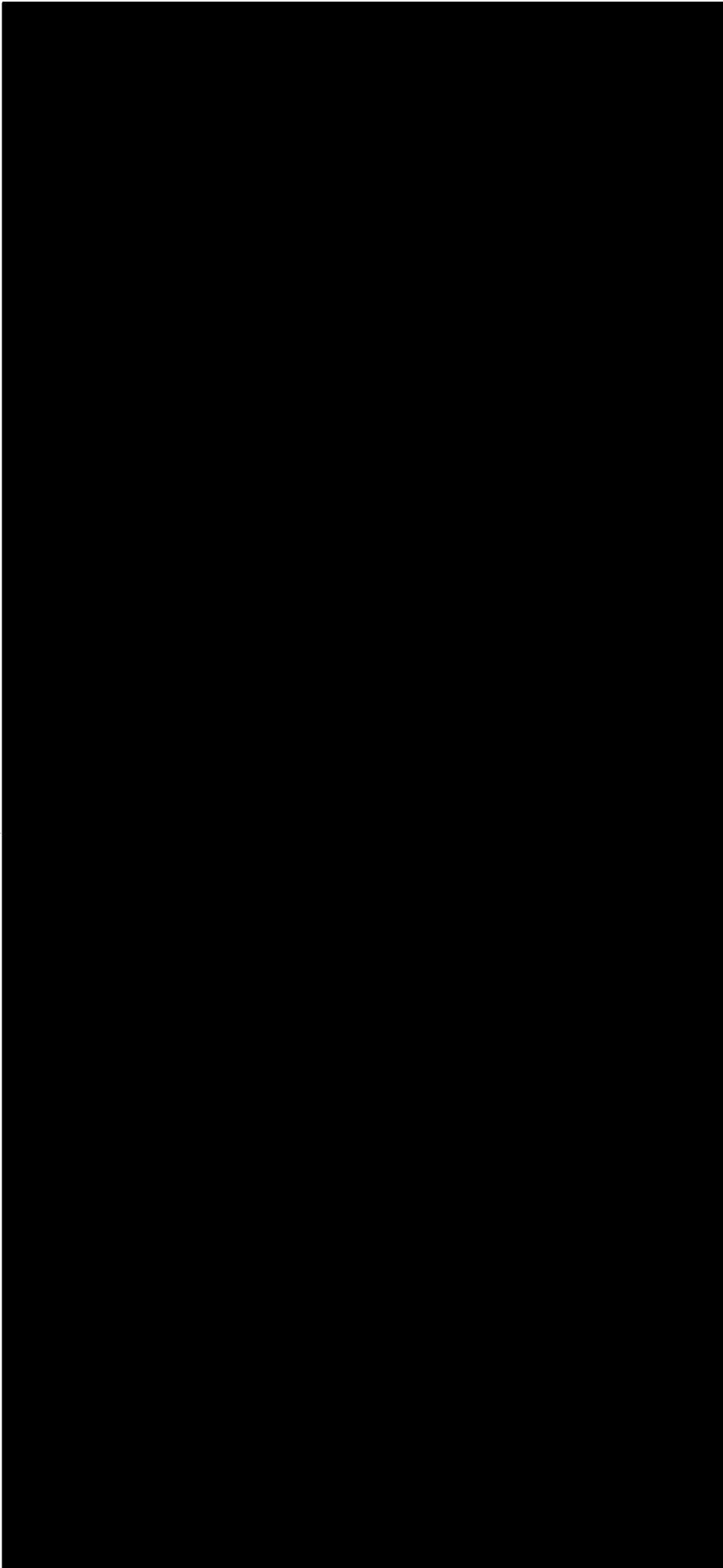
DR C ADAIR
Pharmaceutical Officer

Inspection - Pharmacy Order; Poisons Order;
Misuse of Drugs Act; and Medicines Act.

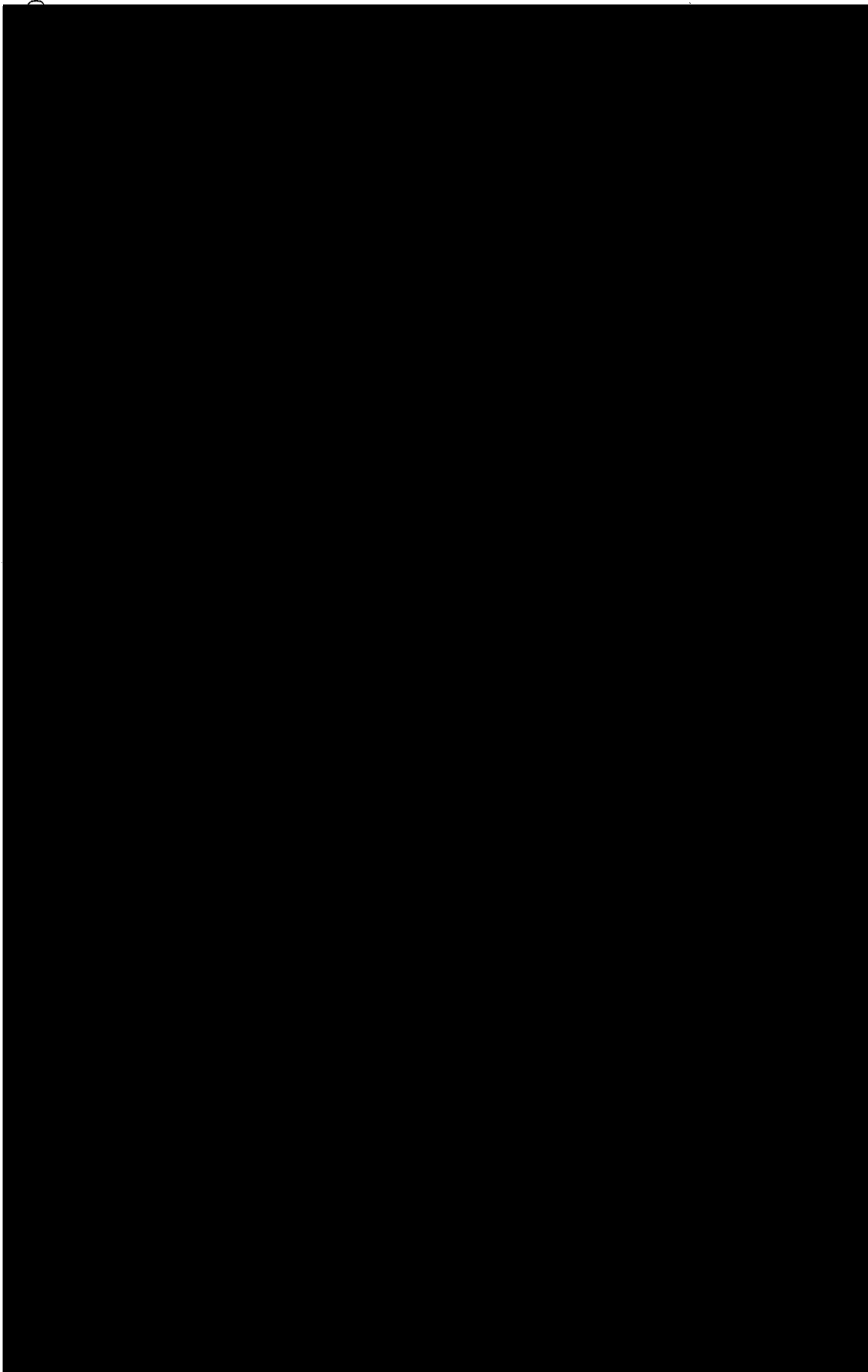
Inspection - the Medicines Act for manufacturer,
wholesale and retail distribution of human and
veterinary medicines. General pharmaceutical
services including Drug Tariff.

Hospital Services; Post-qualification education and
training; Prescribing and supplies.

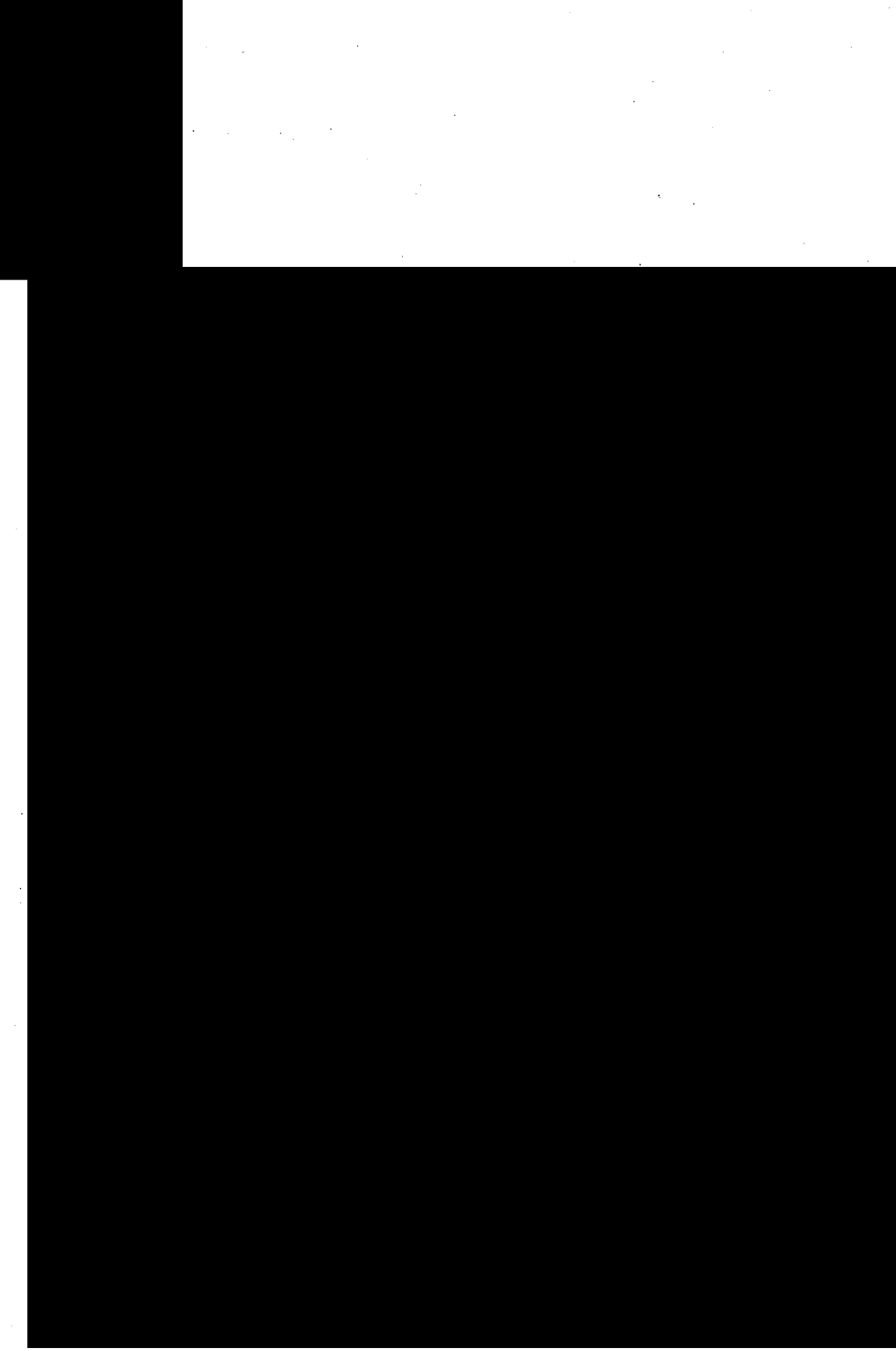
DENTAL SERVICES



NON-DEPARTMENTAL PUBLIC BODIES



NON-DEPARTMENTAL PUBLIC BODIES



SECRET