
29 July 200

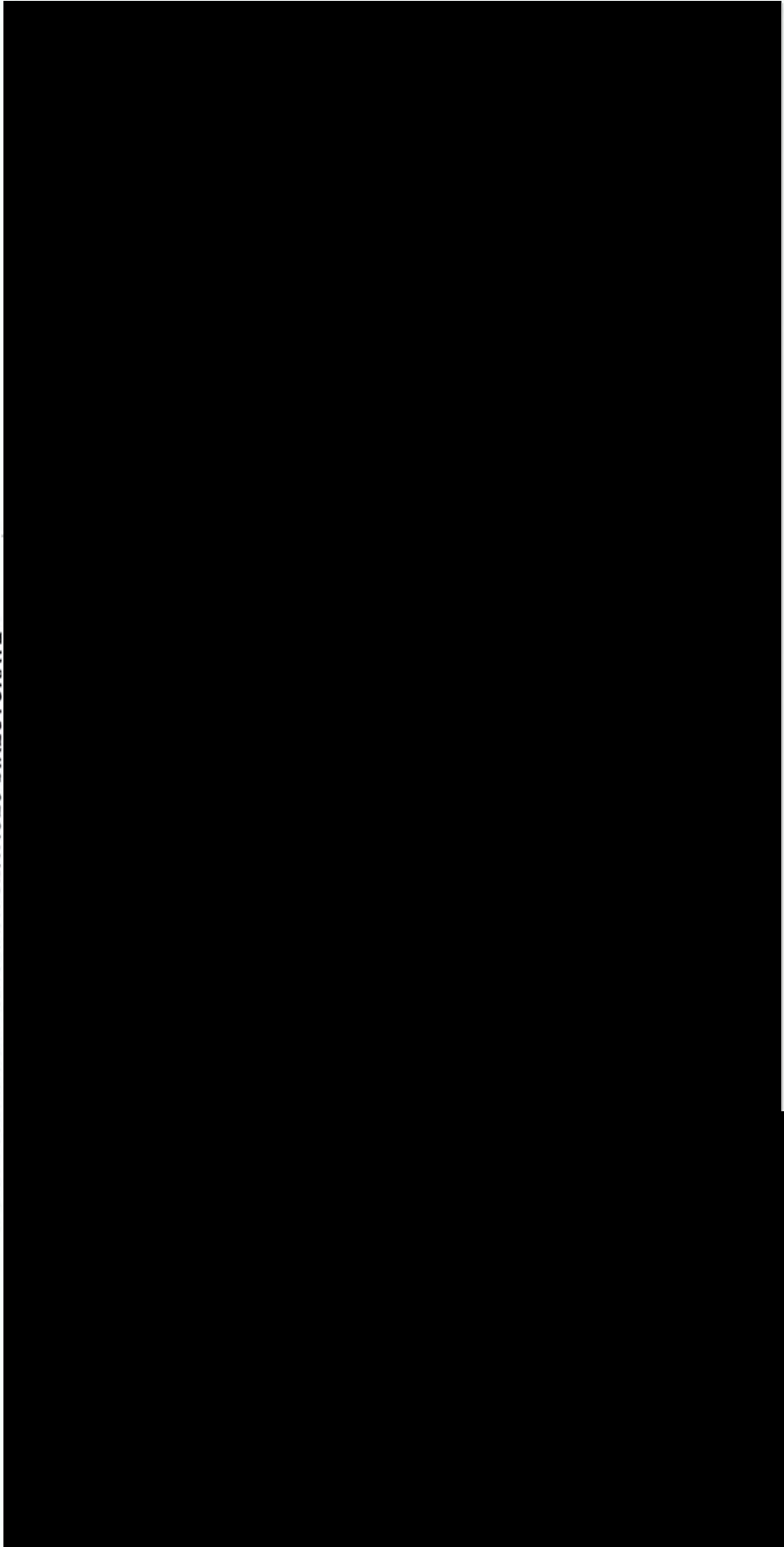
	PAGE
OVERVIEW	
• DEPARTMENT OF HEALTH, SOCIAL SERVICES & PUBLIC SAFETY	1
STRUCTURE	
• OFFICE OF THE PERMANENT SECRETARY	2
• <u>PLANNING AND RESOURCES GROUP (MR D HILL)</u>	3
Personnel & Corporate Services Directorate	4
- Personnel Development Branch	"
- Personnel Management	5
- Information Office	"
- Management Services Unit	"
- Records Administration & Business Support	"
- Resource Control	"
Finance Directorate	6
- Financial Services Unit	"
- Strategic Financial Analysis Unit	"
- Counter Fraud Unit	"
- Resource Acquisition Branch	7
- Finance Policy & Accountability Unit	"
- Performance Review Unit	"
Public Safety, Strategic Planning & Information & Analysis Unit	8
Information & Analysis Unit	"
- Regional Information Branch	"
- Project Support Analysis Branch	"
- Social Services Analysis Branch	"
- Surveys & Research Management Branch	"
- Drugs & Alcohol Information & Research Branch	"
- Economics Branch	"
- Family Practitioner Services Information & Research Branch	9
- Strategic Planning Branch	"
- Evaluation and Equality Unit	"
- Public Safety Unit	"
Directorate of Information Systems	10
	11
Information Technology Group	12
Planning and Resources Group	13
- Internal Audit Group	"
- Health Services Audit	"

• <u>HPSS MANAGEMENT GROUP (MR P SIMPSON)</u>	14
Office of the Deputy Secretary	15
HPSS Legislation Unit	"
Secondary Care Directorate	16
- Acute Hospitals Policy Unit	"
- Regional & Eastern Hospitals Unit	"
- Hospital Services Development	"
Primary Care Directorate	17
- General Medical Services	"
- General Dental & Ophthalmic Services	"
- Pharmacy & Prescribing Branch	"
- Primary Care Development Unit	"
Child & Community Care Directorate	18
- Family Policy Unit	"
- Child Care Unit	"
- Elderly & Community Care Unit	"
- Disability & Mental Health Unit	"
-	"
Planning & Performance Management Directorate	19
- Performance Management (Eastern)	"
- Public Appointments Unit	"
- Capital Investment Unit	"
- Planning & Priorities Unit	"
- Quality & Performance Improvement Unit	"
- Performance Management (Northern, Southern & Western)	"
Human Resources Directorate	20
- Pay & Employment Unit	"
- Workforce Development Unit	"
- HPSS Superannuation Branch	"
- Strategic Change Unit	"
Modernisation Unit	21
• <u>PROFESSIONAL GROUPS</u>	22
Medical & Allied Services	23
- Specific Services	"
- Employment Medical Advisory Services	"
- Medical & Allied Division	"
- Medical Support Services	"
- Occupational Health Service	24

Health Development Directorate	25
- Investing for Health Team	"
- Health Promotion Team	"
- Health Protection Team	"
- Drugs & Alcohol Strategy Team	"
Nursing & Midwifery Advisory Group	26
Social Services Inspectorate	27
Dental Services	28
Pharmaceutical Advice & Services	29
• <u>HEALTH ESTATES AGENCY (MR R BROWNE)</u>	30
Estate Development	31
Estate Policy	32
• <u>NON-DEPARTMENTAL PUBLIC BODIES</u>	
Mental Health Commission	33
Food Standards Agency	34

Revised 29/07/02

PERSONNEL AND CORPORATE SERVICES DIRECTORATE



PLANNING AND RESOURCE GROUP

Page 4

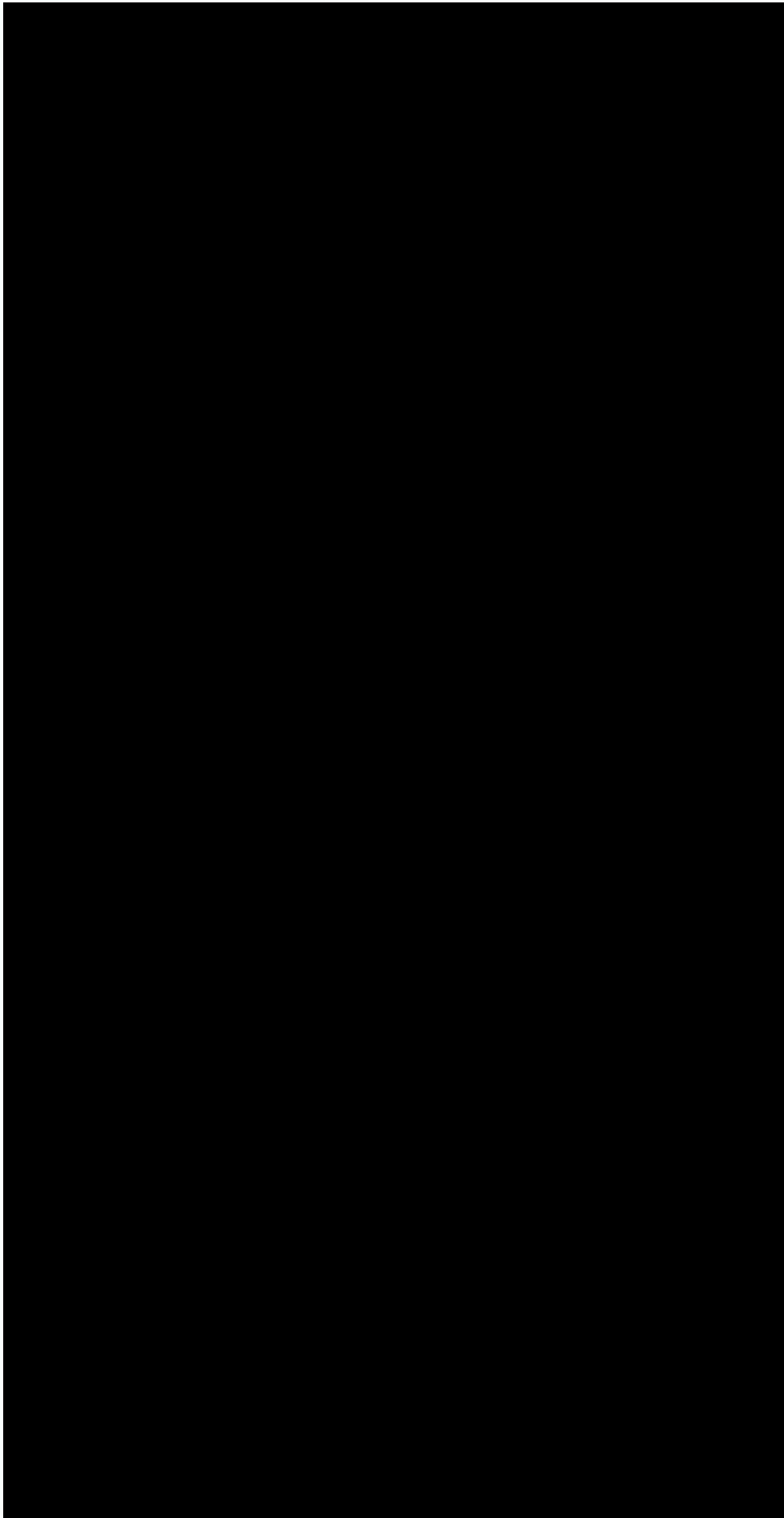
Revised 29/07/02



PLANNING AND RESOURCE GROUP

Page 5

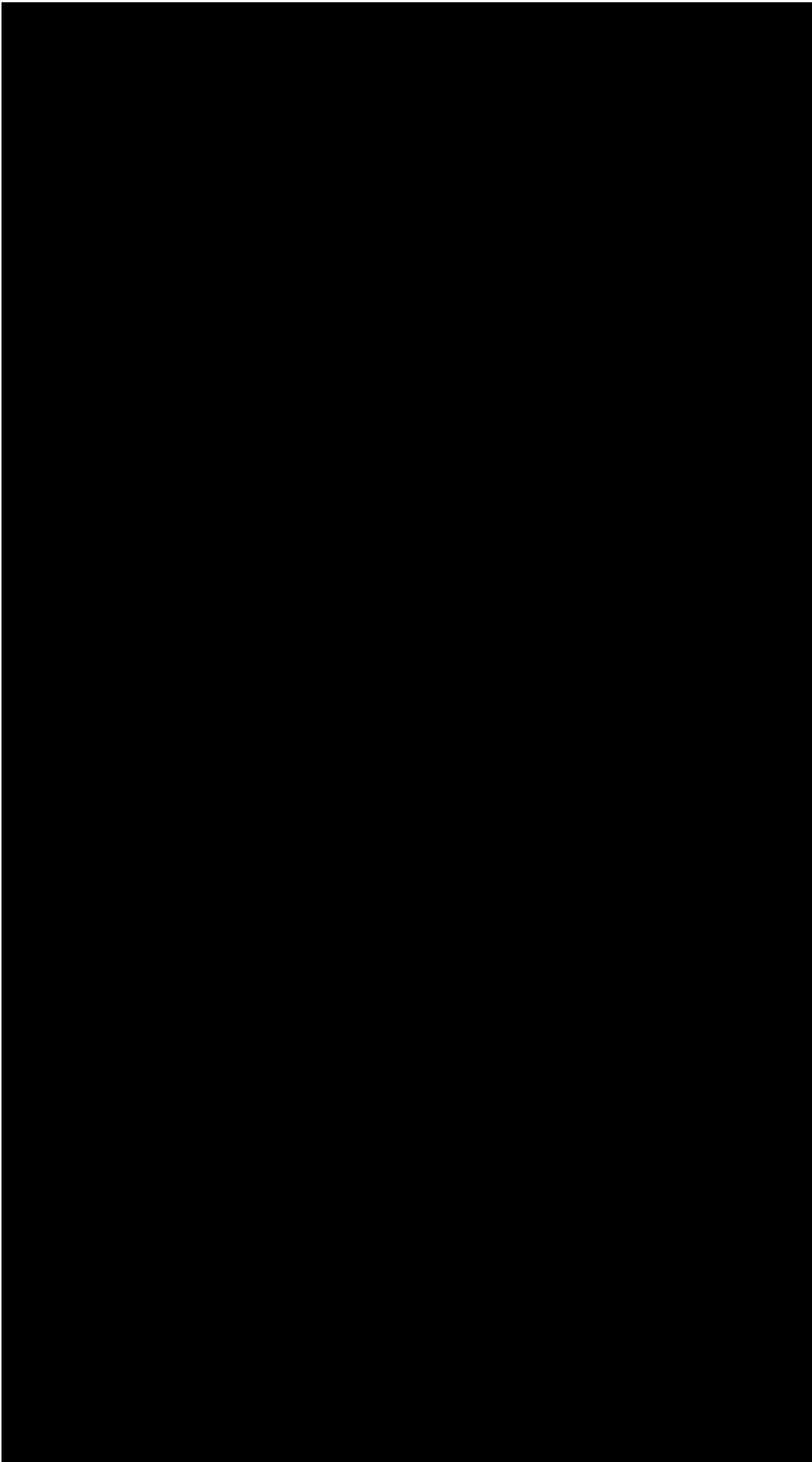
Revised 29/07/02



PLANNING AND RESOURCE GROUP

Page 6

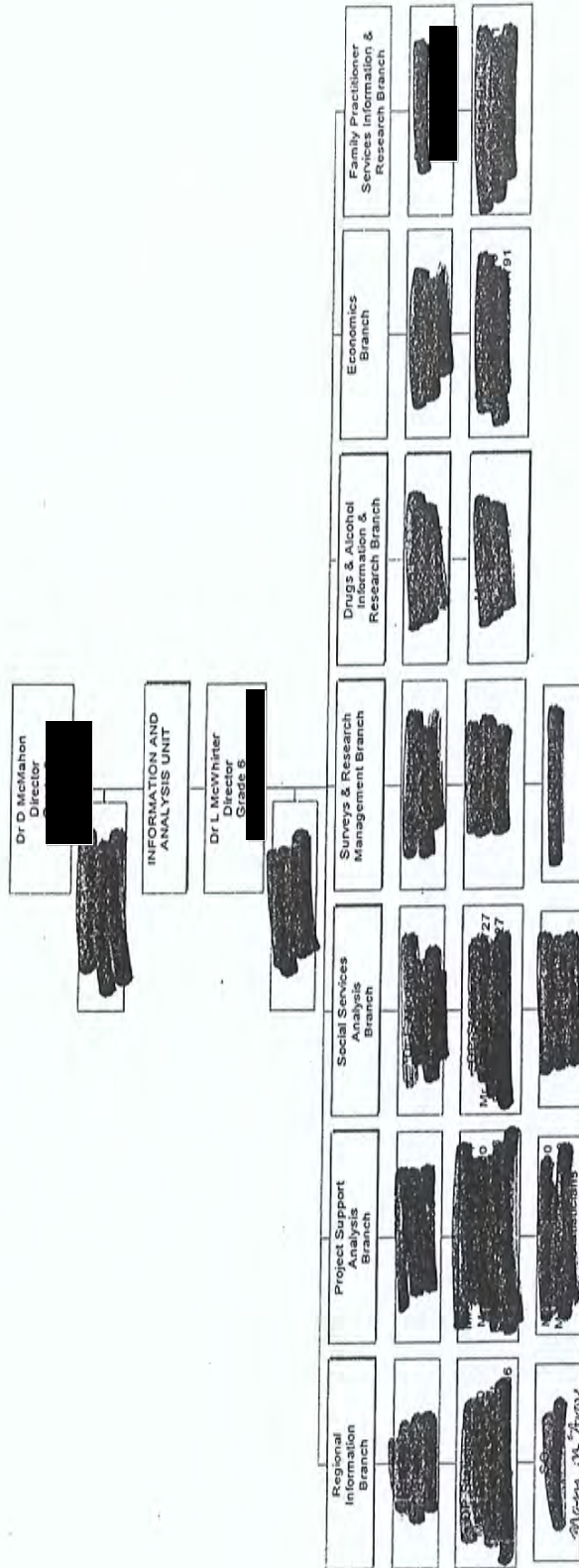
Revised 29/07/02



PLANNING AND RESOURCE GROUP

Page 7

PUBLIC SAFETY, STRATEGIC PLANNING & INFORMATION AND ANALYSIS UNIT

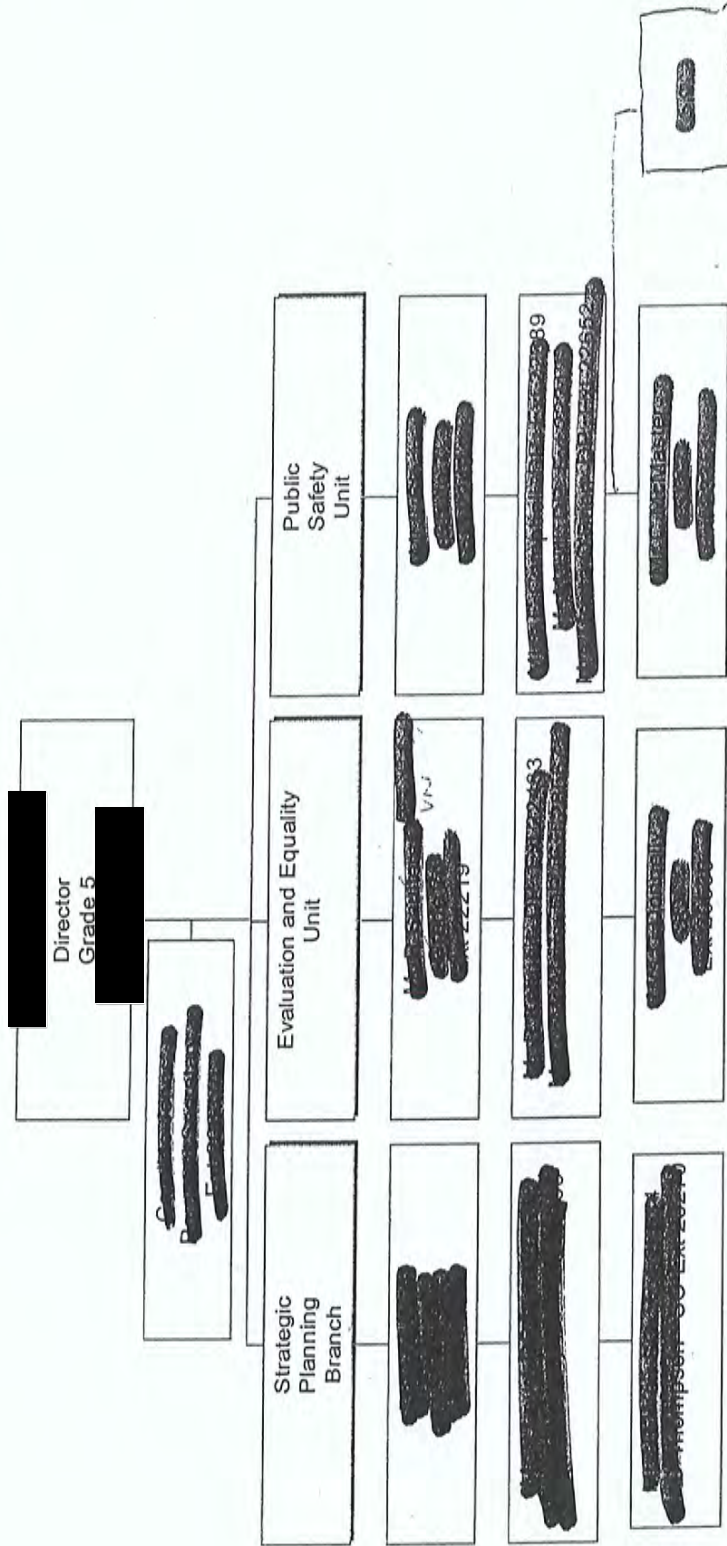


Provides high quality, confidential, reliable economic advice on business cases, policy and resource allocation issues.

To identify and formulate information requirements such as confidentiality, data protection, ethics, coding. To act as the Secretariat for Departmental Surveys, Registers and Research Group; to help set the policy context for surveys, registers, research and development. To commission surveys or otherwise to provide input to requirements, through advice, funding.

- evaluation and validation of information from providers and purchasers within the HPSS
- production of management reports on key activities for the HSS Executive and wider Department
- provision of a primary analysis and query processing service for Departmental interests

PUBLIC SAFETY, STRATEGIC PLANNING & INFORMATION AND ANALYSIS UNIT

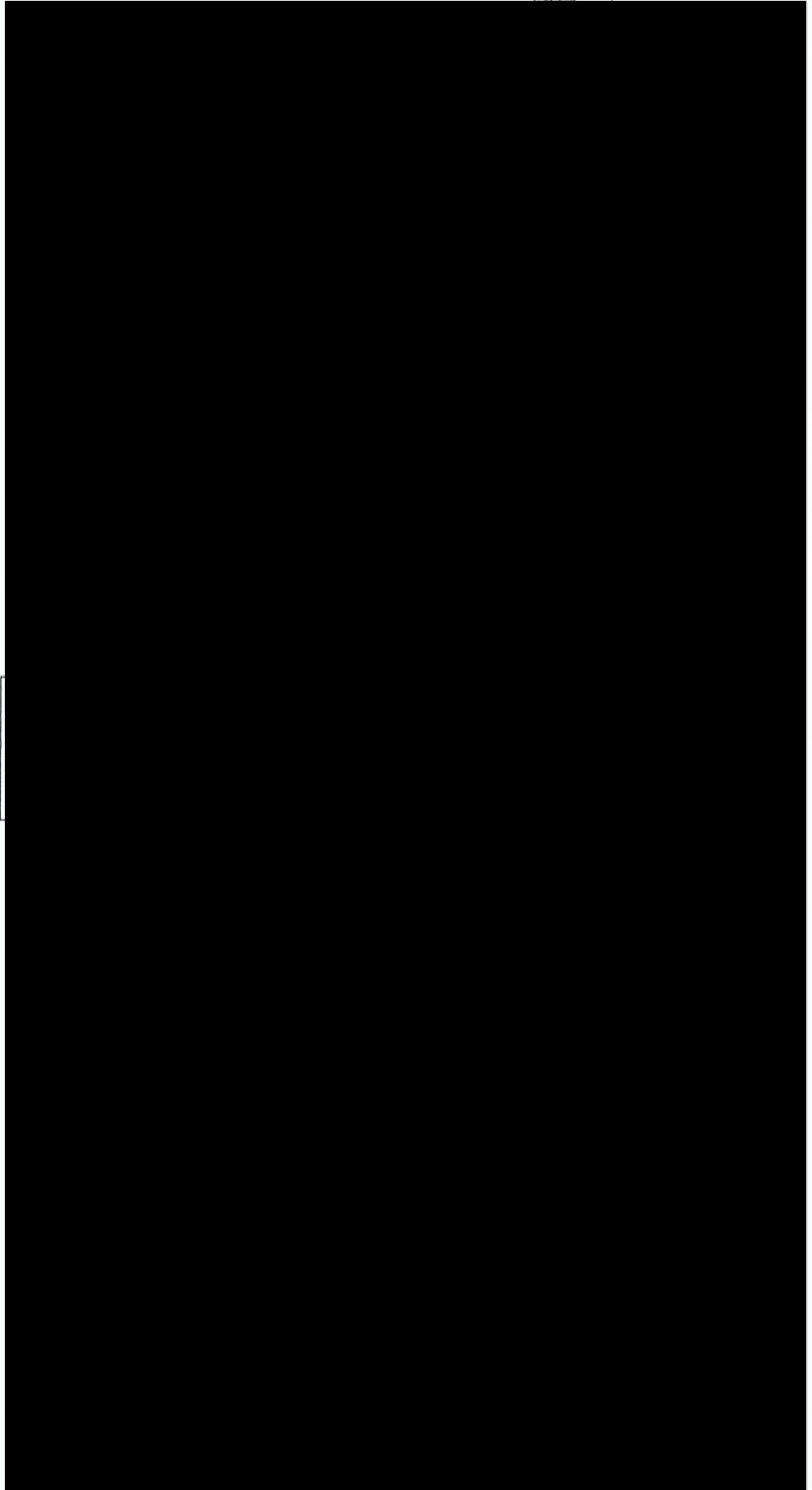


Responsible for policy on: Strategic Planning, Targeting Social Need, Human Rights, Equality and matters belonging to Human Fertilisation and Embryology.

Emergency Planning
Fire Service
Ambulance Service

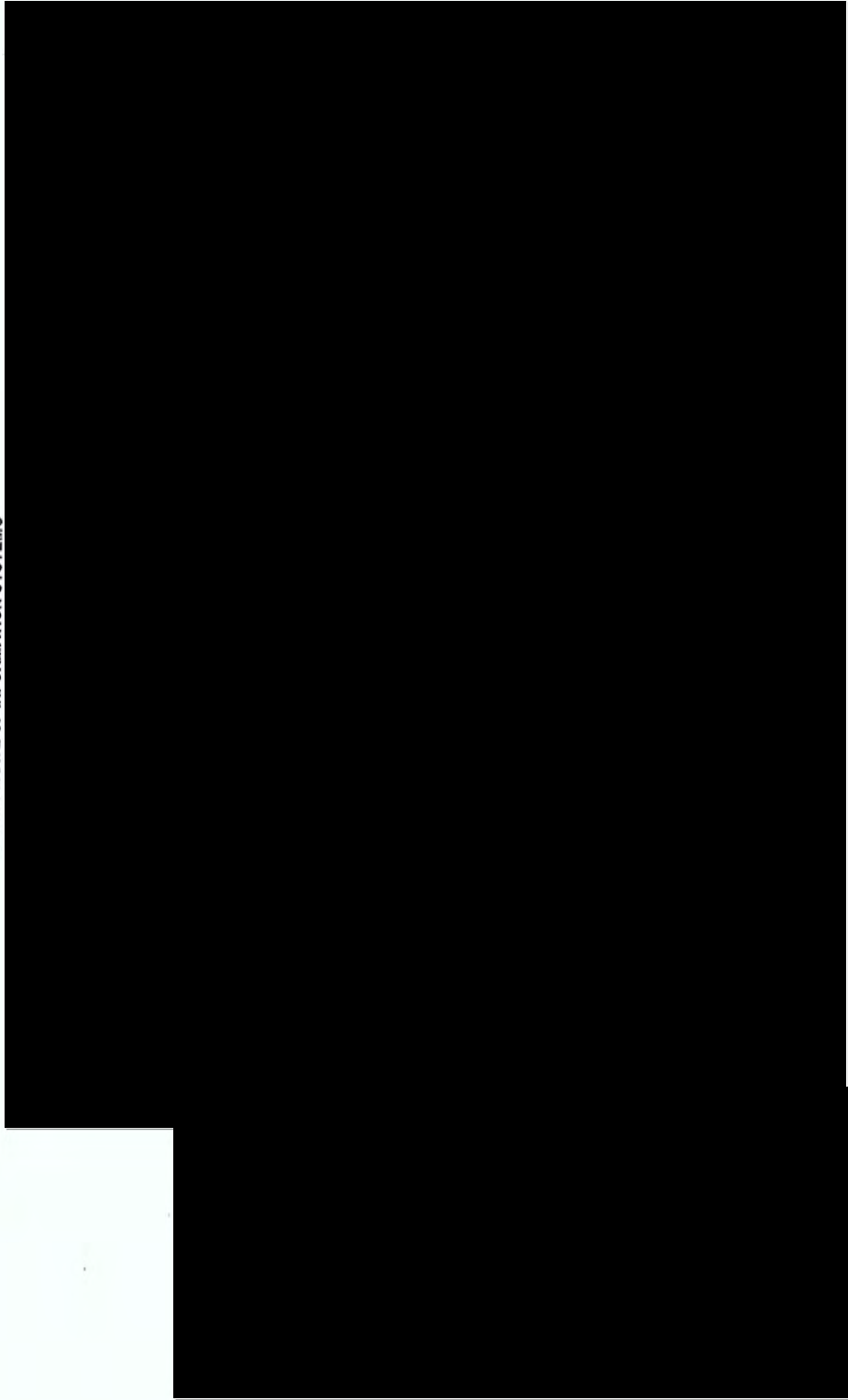
Revised 29/07/02

DIRECTORATE OF INFORMATION SYSTEMS



Revised 29/07/02

DIRECTORATE OF INFORMATION SYSTEMS



PLANNING AND RESOURCE GROUP

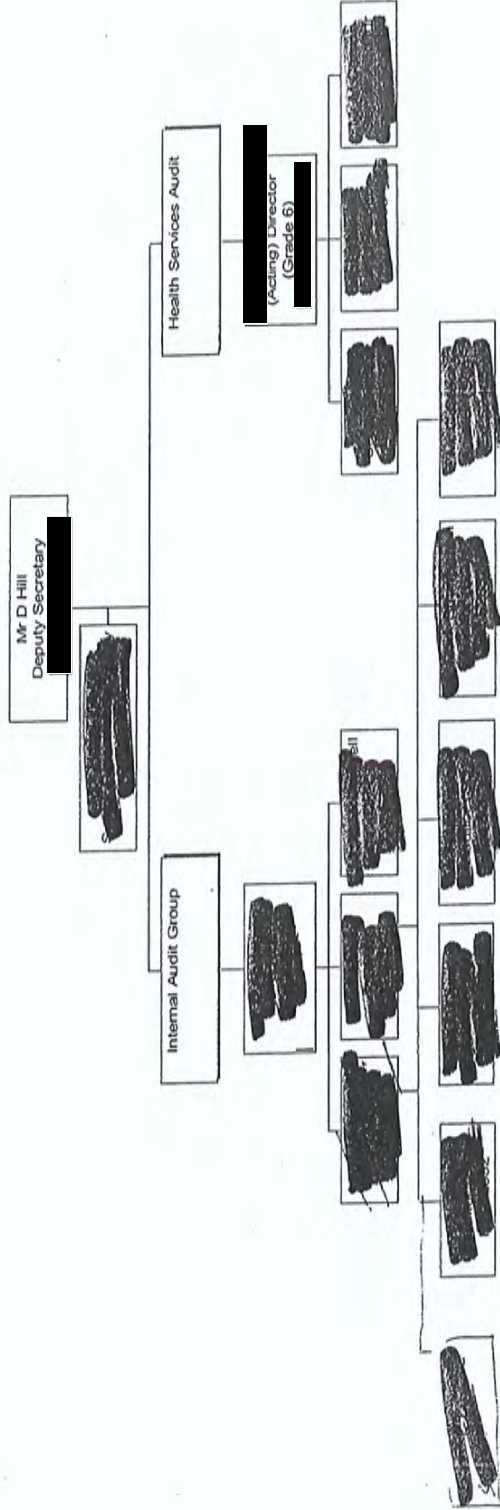
Revised 29/07/02

INFORMATION TECHNOLOGY GROUP



PLANNING AND RESOURCE GROUP

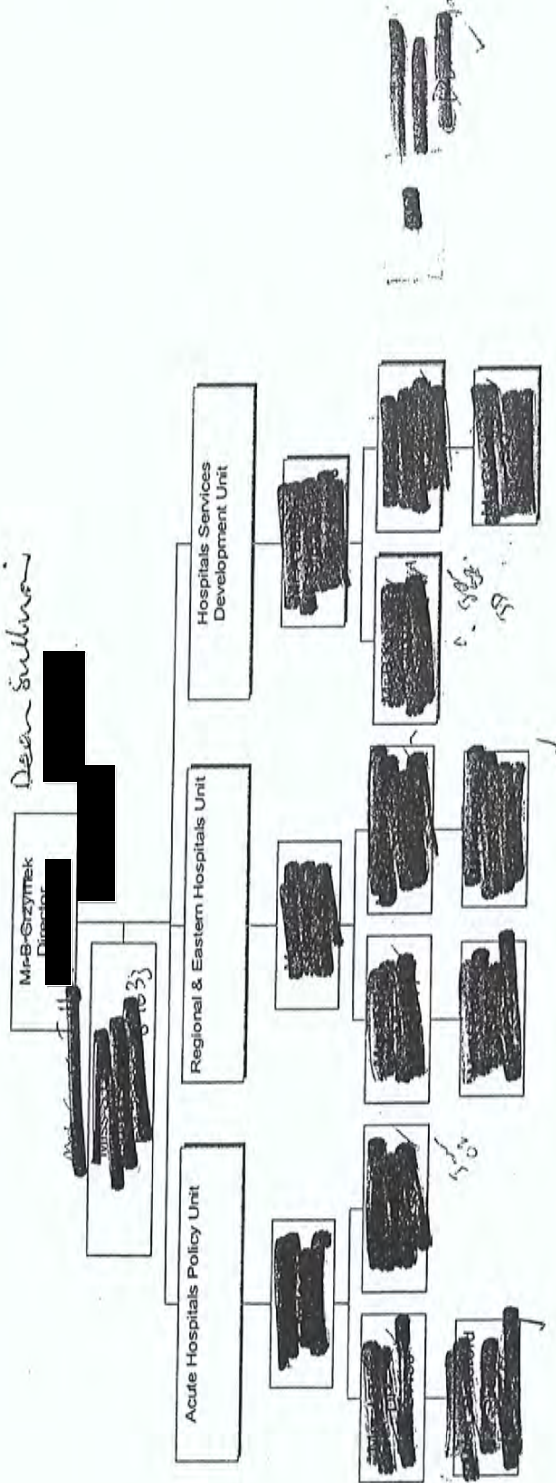
PLANNING AND RESOURCES GROUP



Provides Internal Audit services to
DHSS&PS and to Health Estates Agency

Secure and monitor the statutory audit of Health & Social
Service bodies and commission value for money studies.

SECONDARY CARE DIRECTORATE



Acute Hospitals Policy Unit

- Acute hospitals policy
- North - South cooperation
- Sub-fertility services
- Human Fertilisation and embryology
- Waiting Lists
- Services Pressures
- EU treatment
- Needs & Effectiveness
- Imaging
- Telemedicine
- Equipment procurement
- Voluntary bodies
- T&D Monitoring

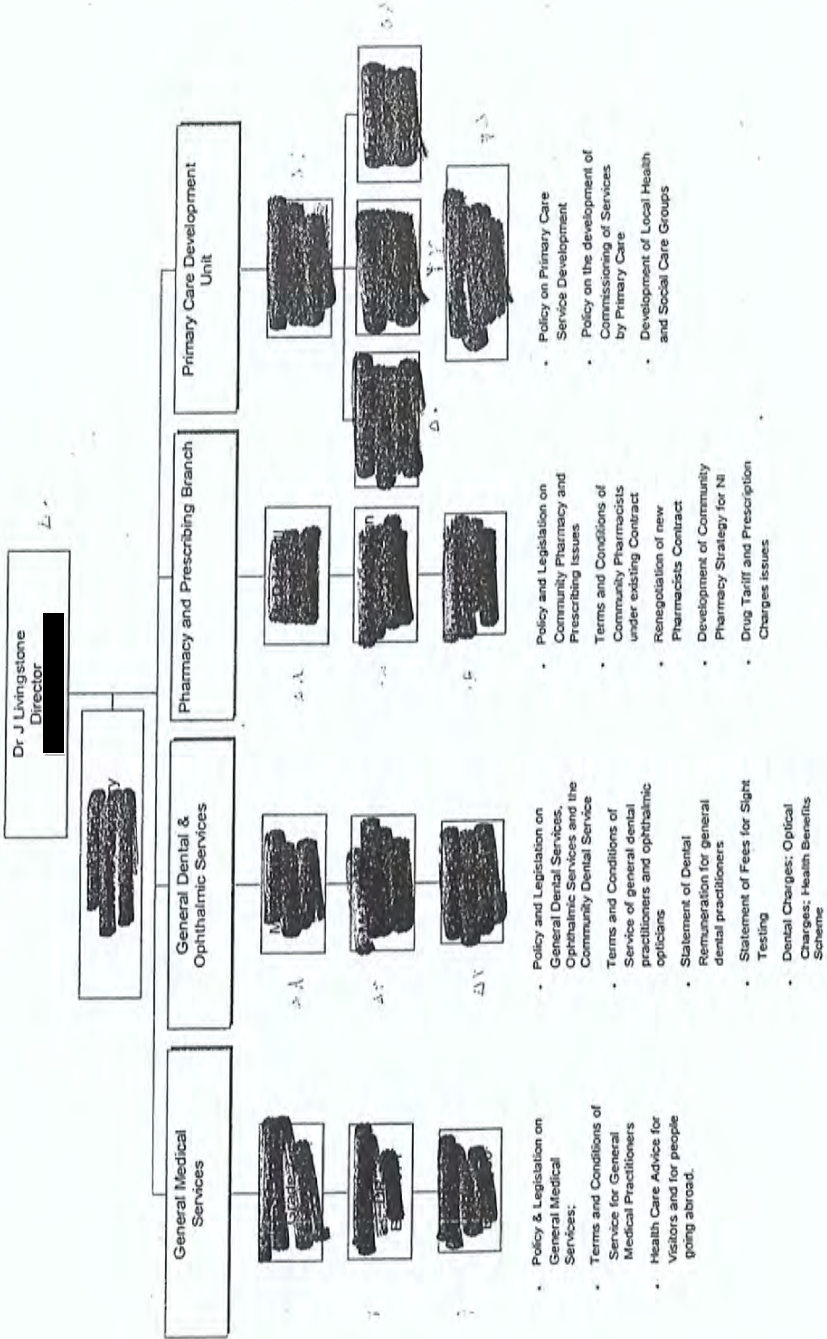
Regional & Eastern Hospitals Unit

- Service delivery - Eastern Board hospitals
- Cardiac surgery and cardiology reviews
- Belfast Maternity Services Review
- Orthopaedics
- Fractures
- RMSCL liaison
- Specialised services
- Renal services
- Organ donation
- Transplantation
- Hospital travel
- Ophthalmology review

Hospital Services Development Unit

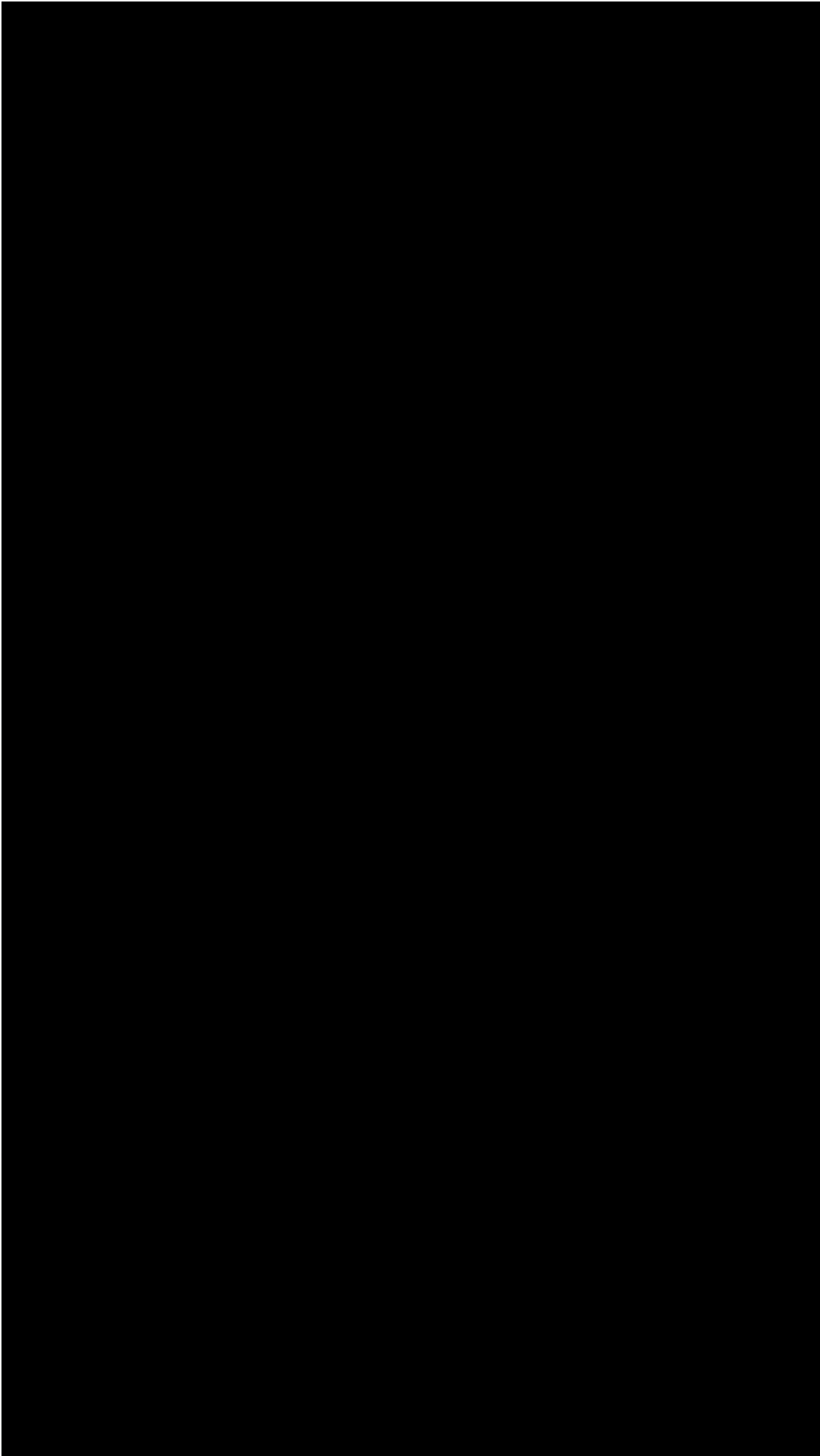
- Service delivery - N. S W Board hospitals
- Cancer services
- Human genetics
- Hospice services
- Hospital cleanliness
- Complementary and alternative medicine
- Neurology review
- Intensive Care
- Inter-hospital transfers
- Hospital prescribing
- Human Organs Inquiry
- Human Tissue Act
- Tissue banking
- Laboratory services

PRIMARY CARE DIRECTORATE

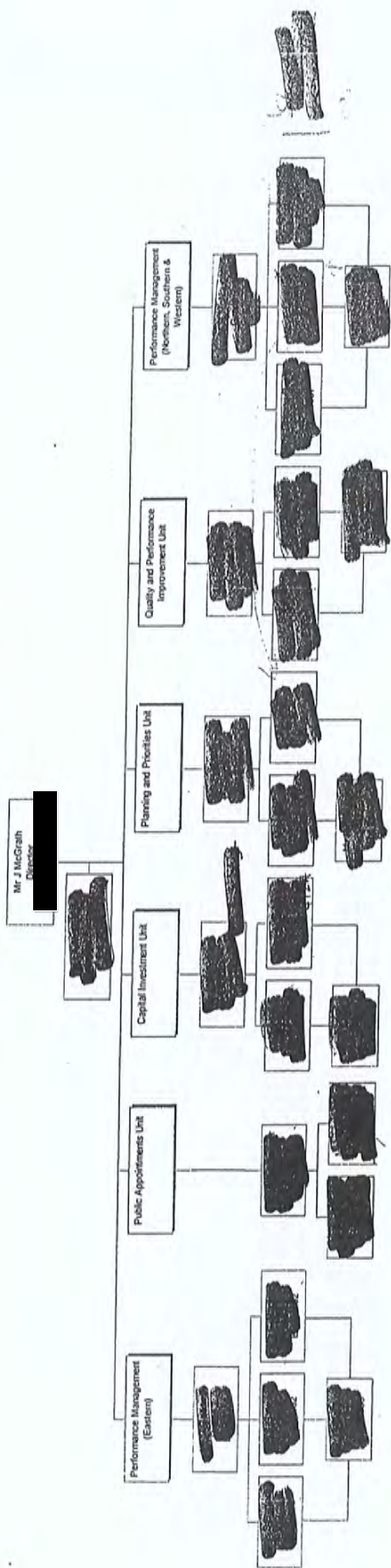


Revised 29/07/02

CHILD & COMMUNITY CARE DIRECTORATE



PLANNING AND PERFORMANCE MANAGEMENT DIRECTORATE



Monitoring/Easlem Board & Trusts
 Accountability Reviews
 Bilateral
 Trust Accountability
 Recovery Plans (with FMD)
 Business Cases

Public Appointments
 Policy
 Appointment Process
 Appraisal
 Corporate Governance
 AA support for 4th Floor

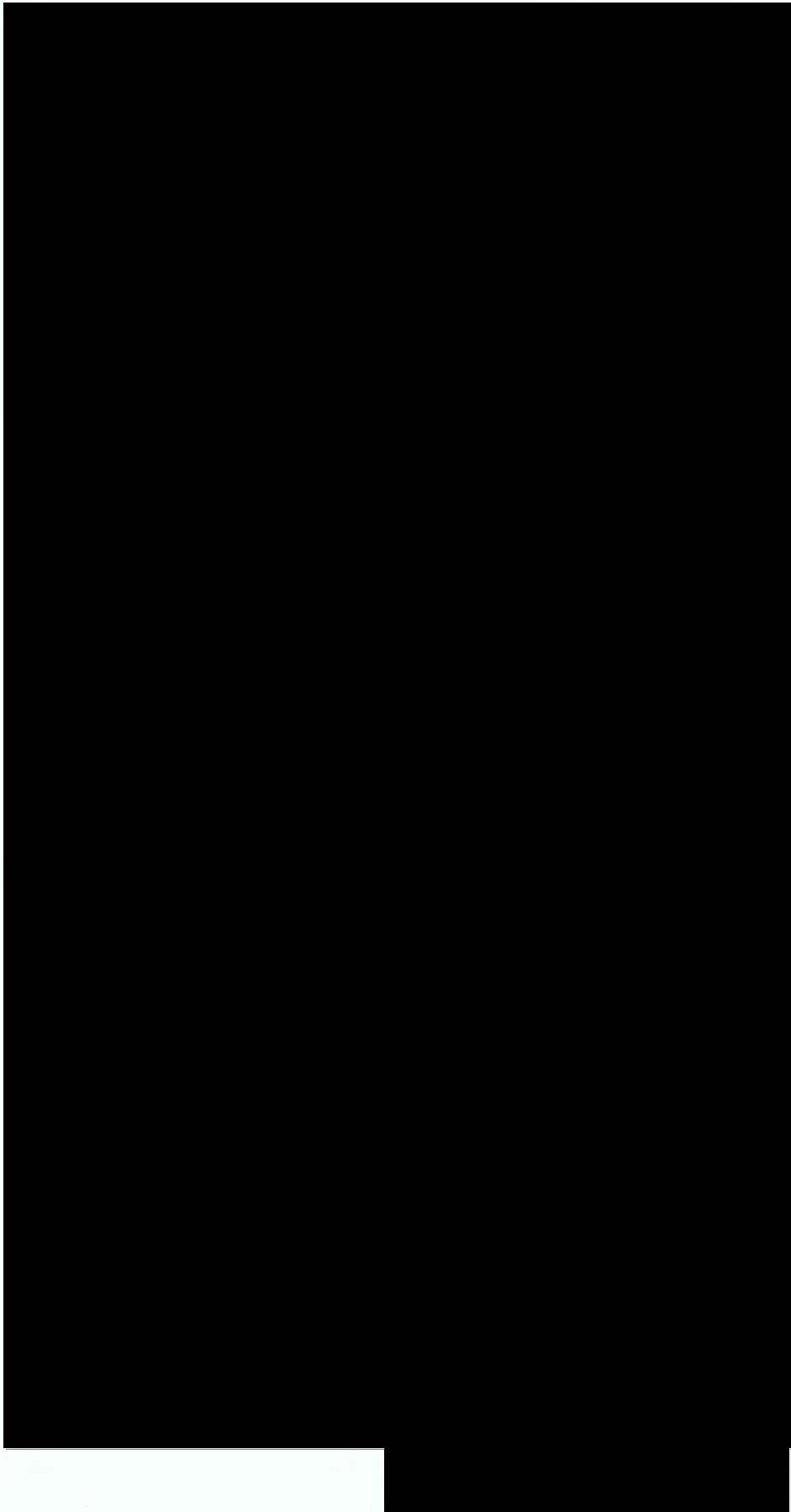
Capital Planning
 Prioritisation of
 major schemes
 Monitoring of n
 schemes
 Capital Investin
 Strategy
 Estate Rationa

check spelling of Kinnear/Kinnie

Caravethos

*Corporate
 Gov
 FSN = 13*

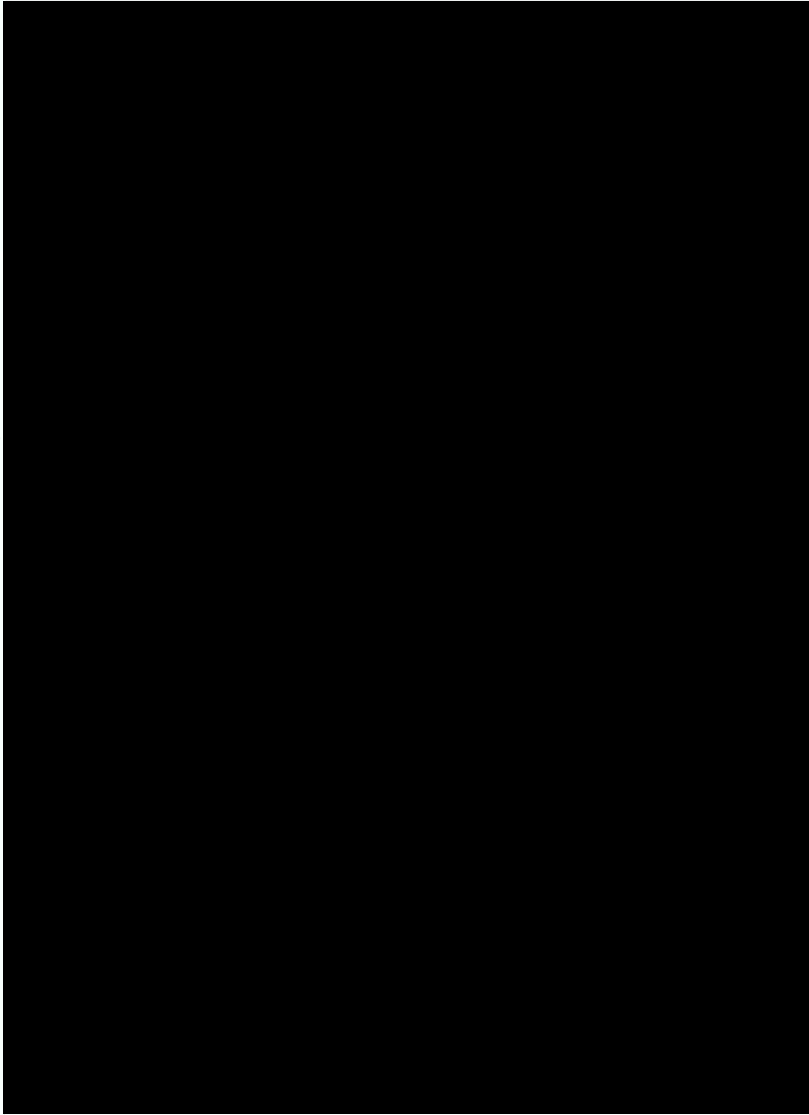
Revised 29/07/02



HPSS MANAGEMENT GROUP

Page 20

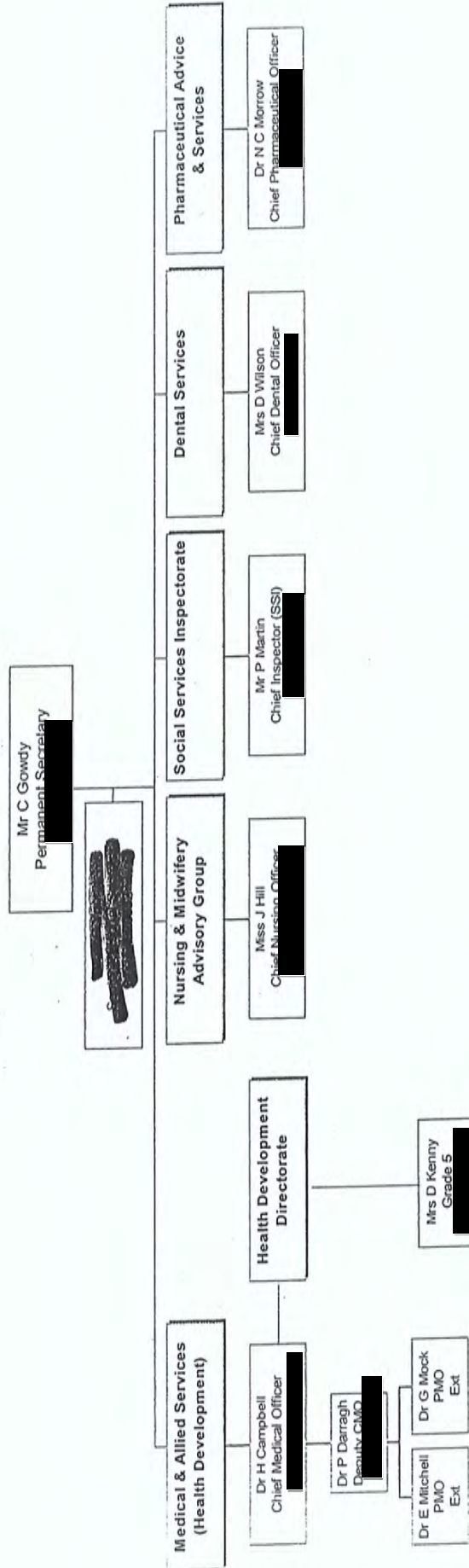
Revised 29/07/02



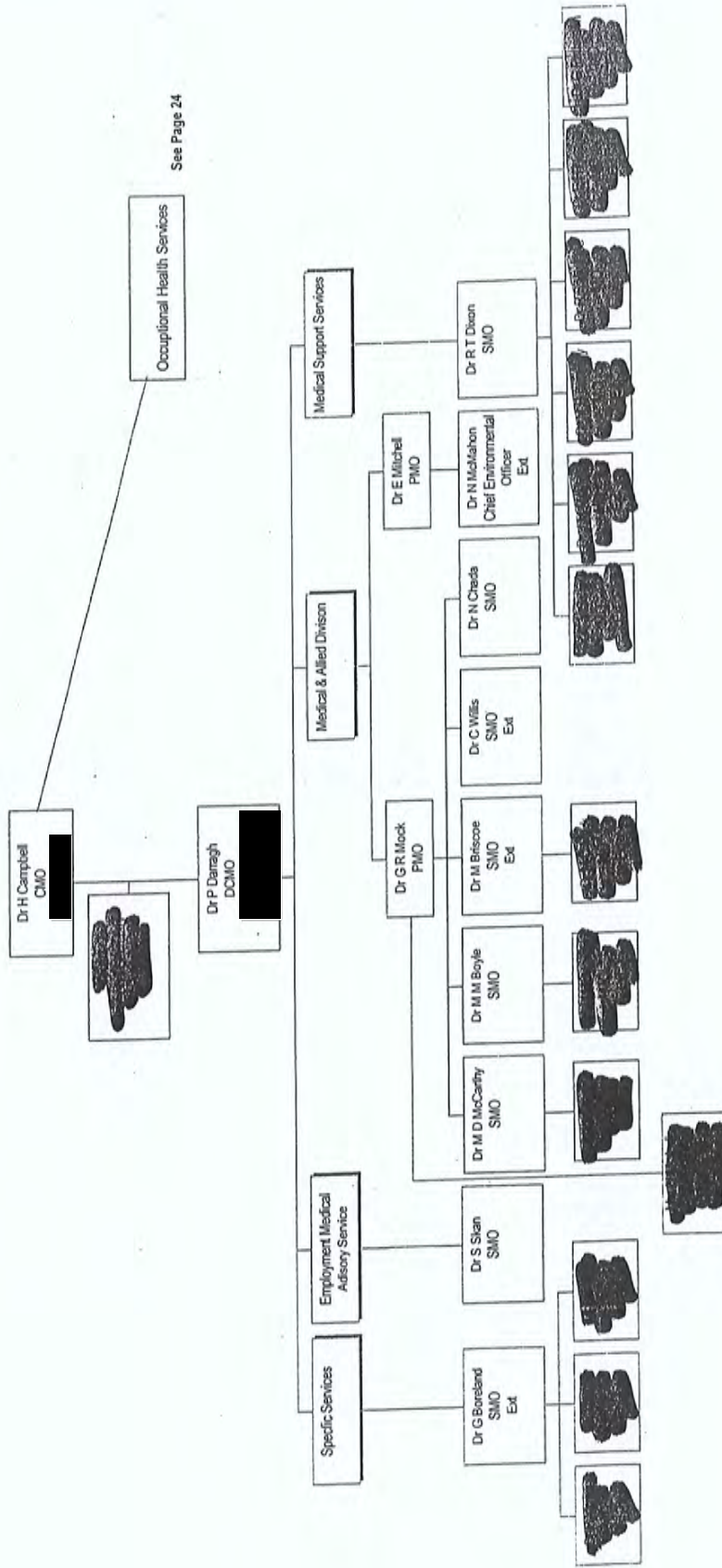
HPSS MANAGEMENT GROUP

Page 21

PROFESSIONAL GROUPS

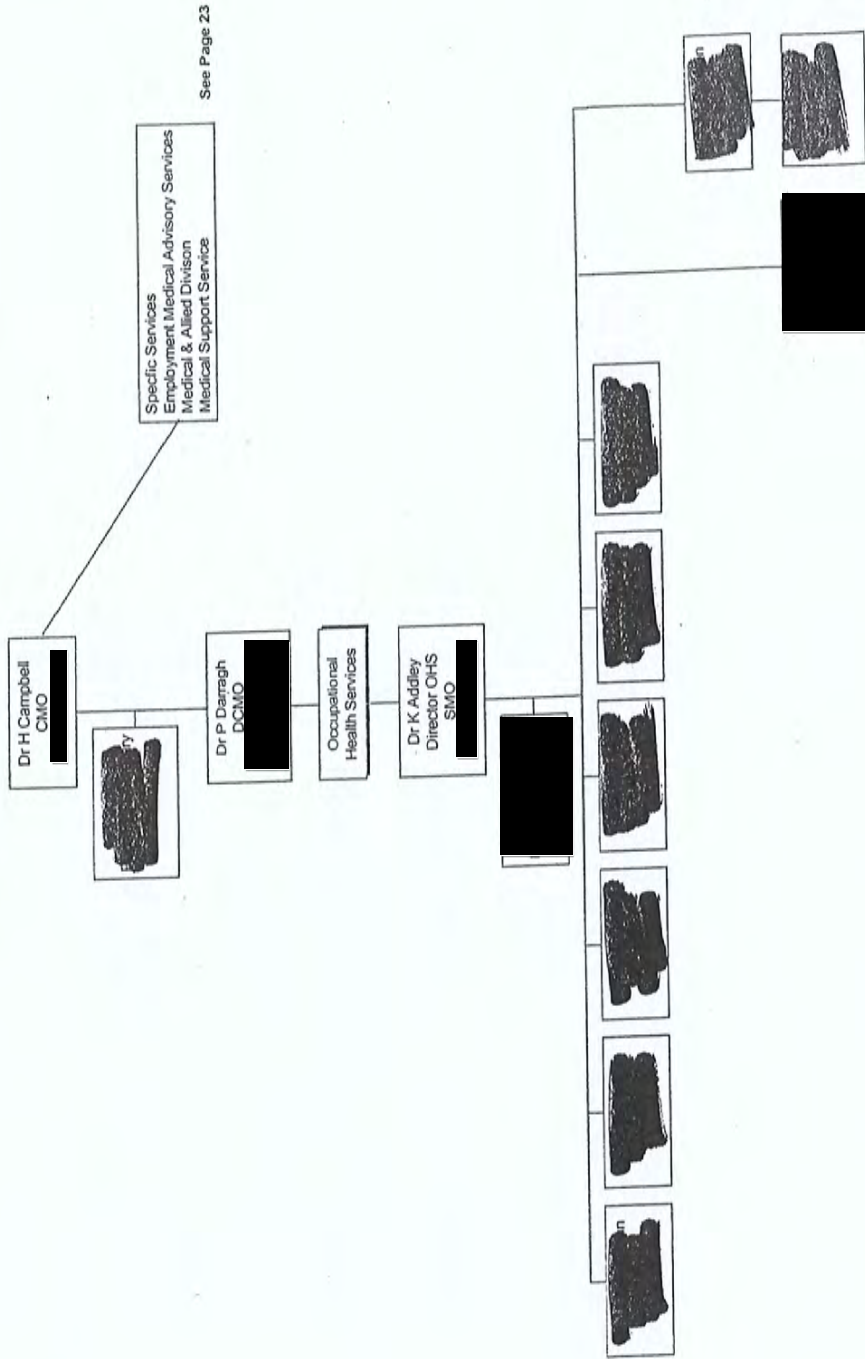


MEDICAL AND ALLIED SERVICES



See Page 24

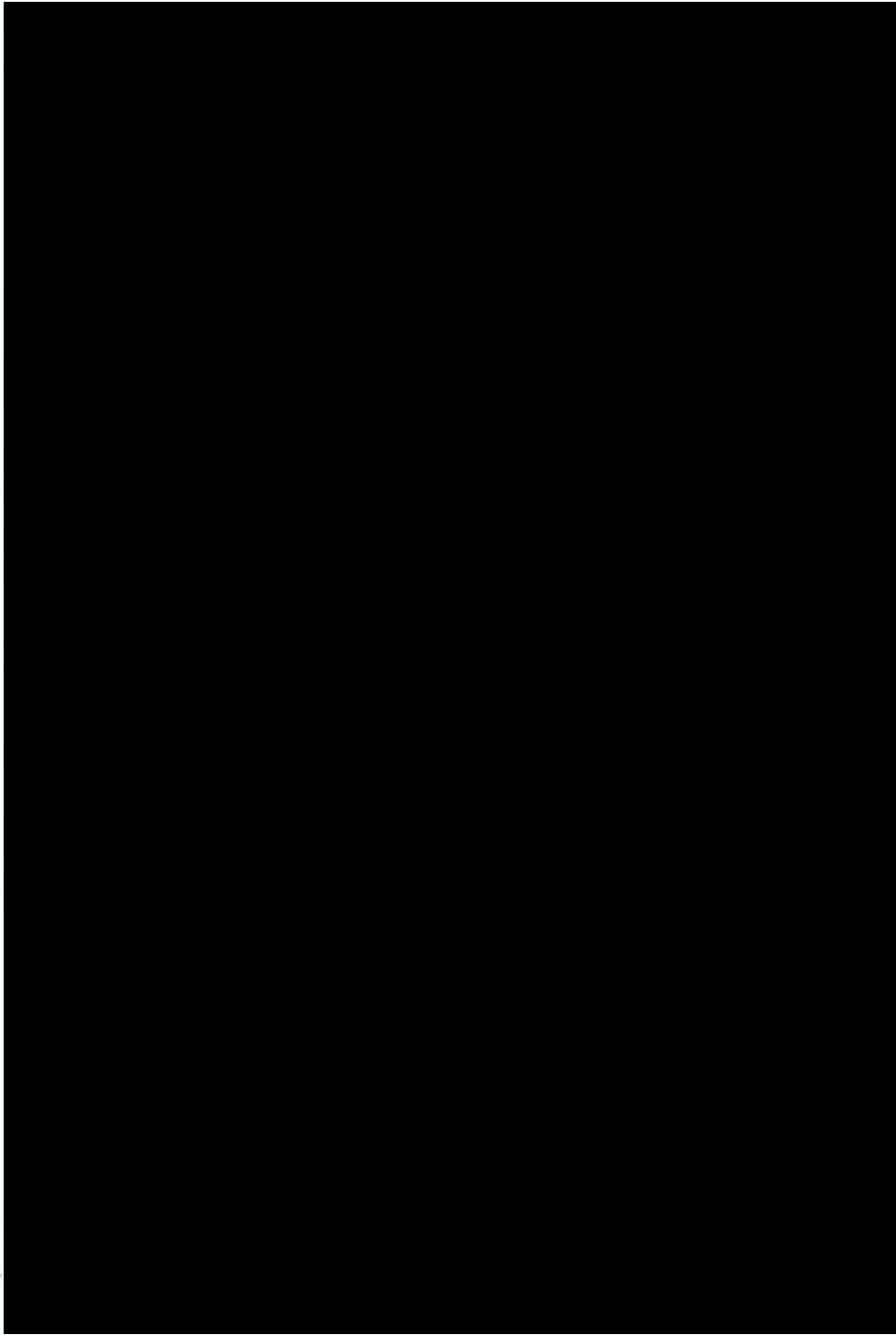
MEDICAL AND ALLIED SERVICES



PROFESSIONAL GROUPS

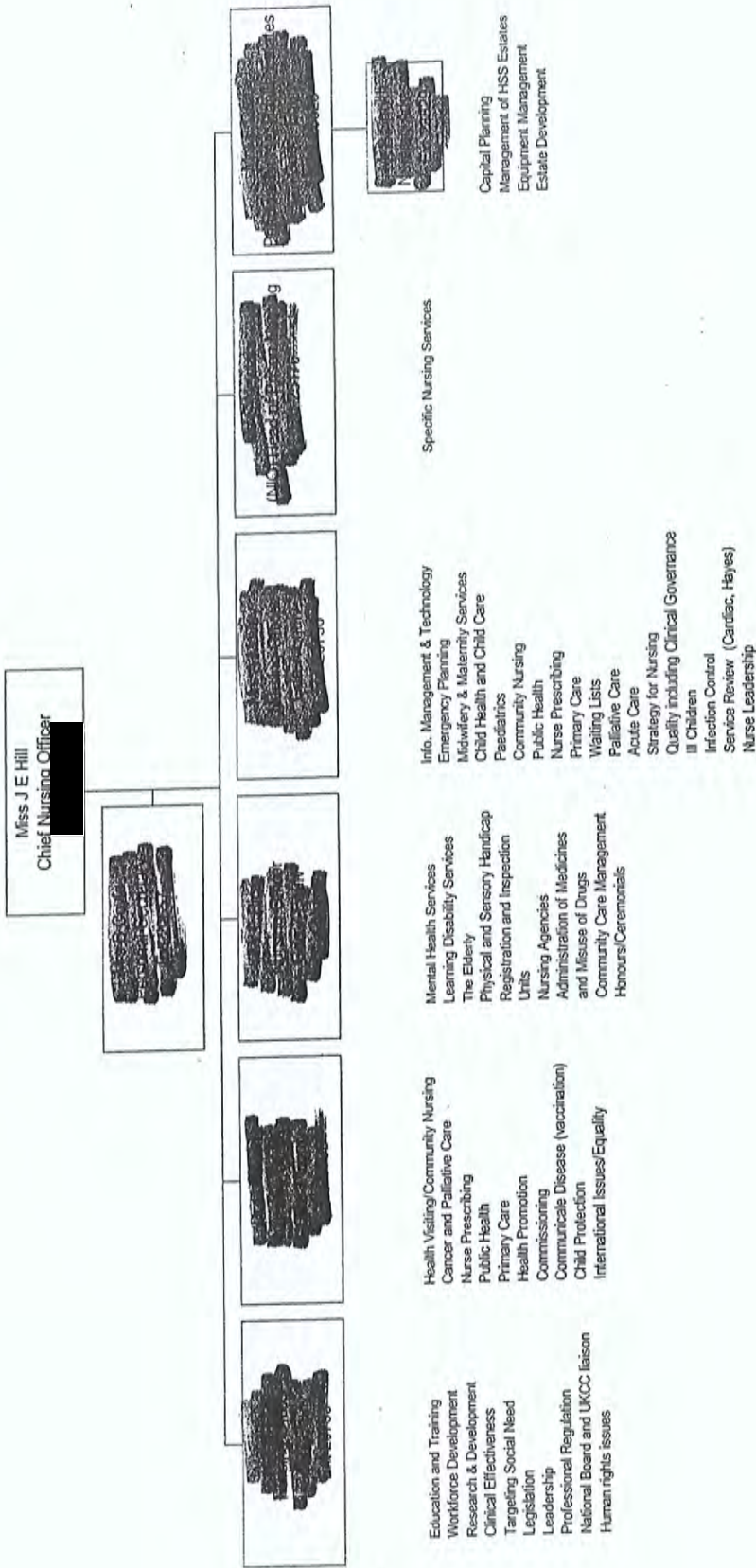
Revised 29/07/02

HEALTH DEVELOPMENT DIRECTORATE



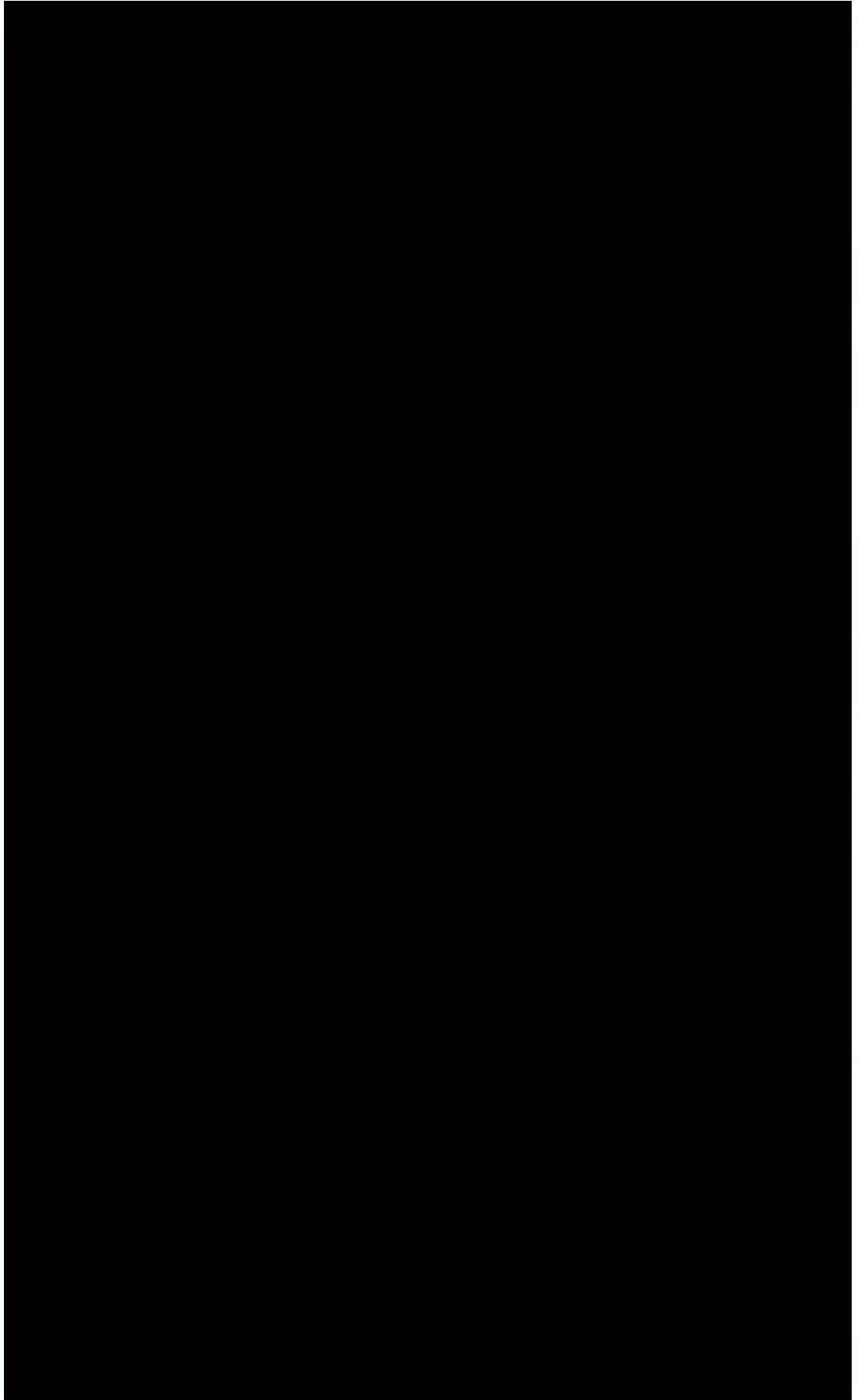
PROFESSIONAL GROUPS

NURSING AND MIDWIFERY ADVISORY GROUP



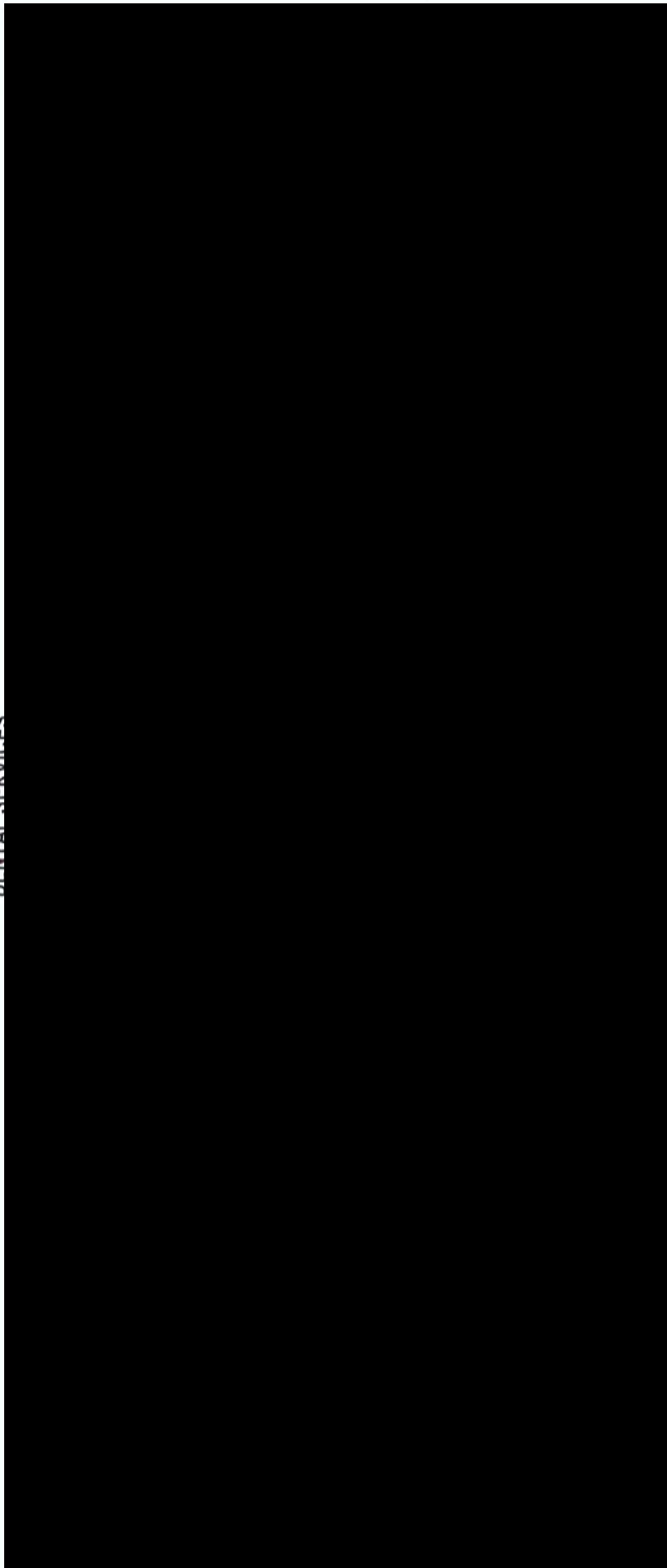
Revised 29/07/02

SOCIAL SERVICES INSPECTORATE



Revised 29/07/02

DENTAL SERVICES

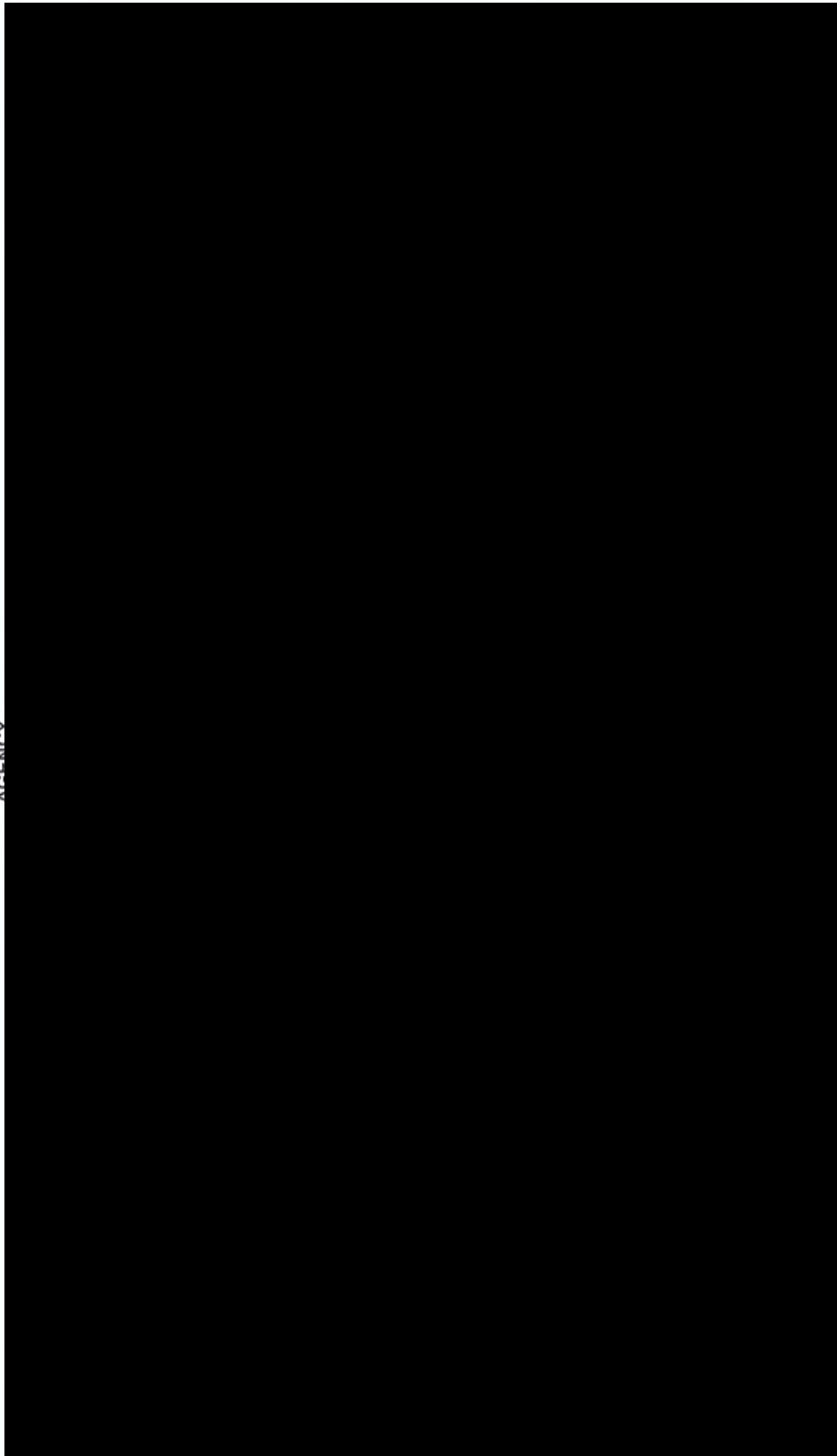


PROFESSIONAL GROUPS

Revised 29/07/02

Index

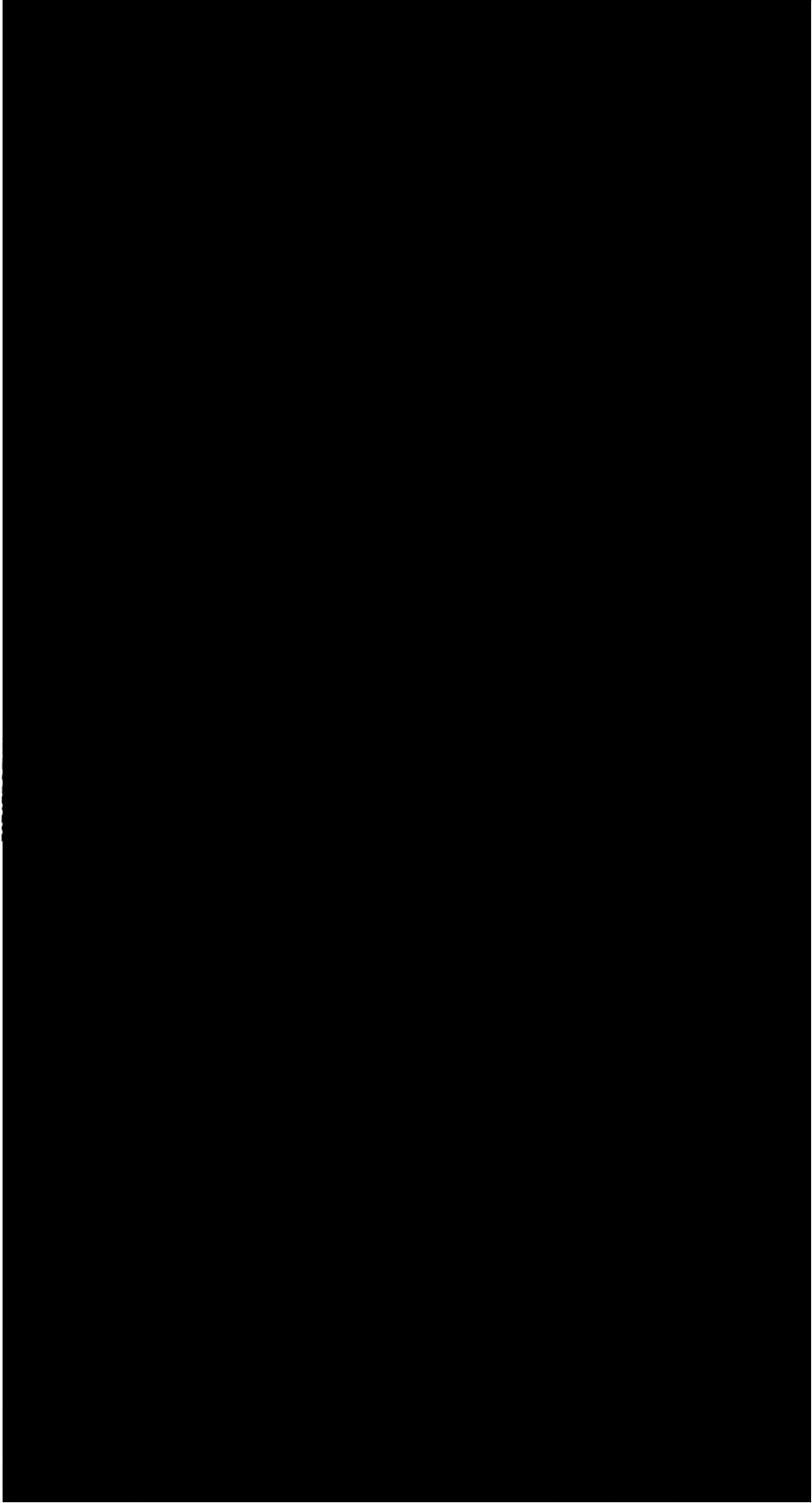
HEALTH ESTATES
AGENCY



HEALTH ESTATES AGENCY

Page 30

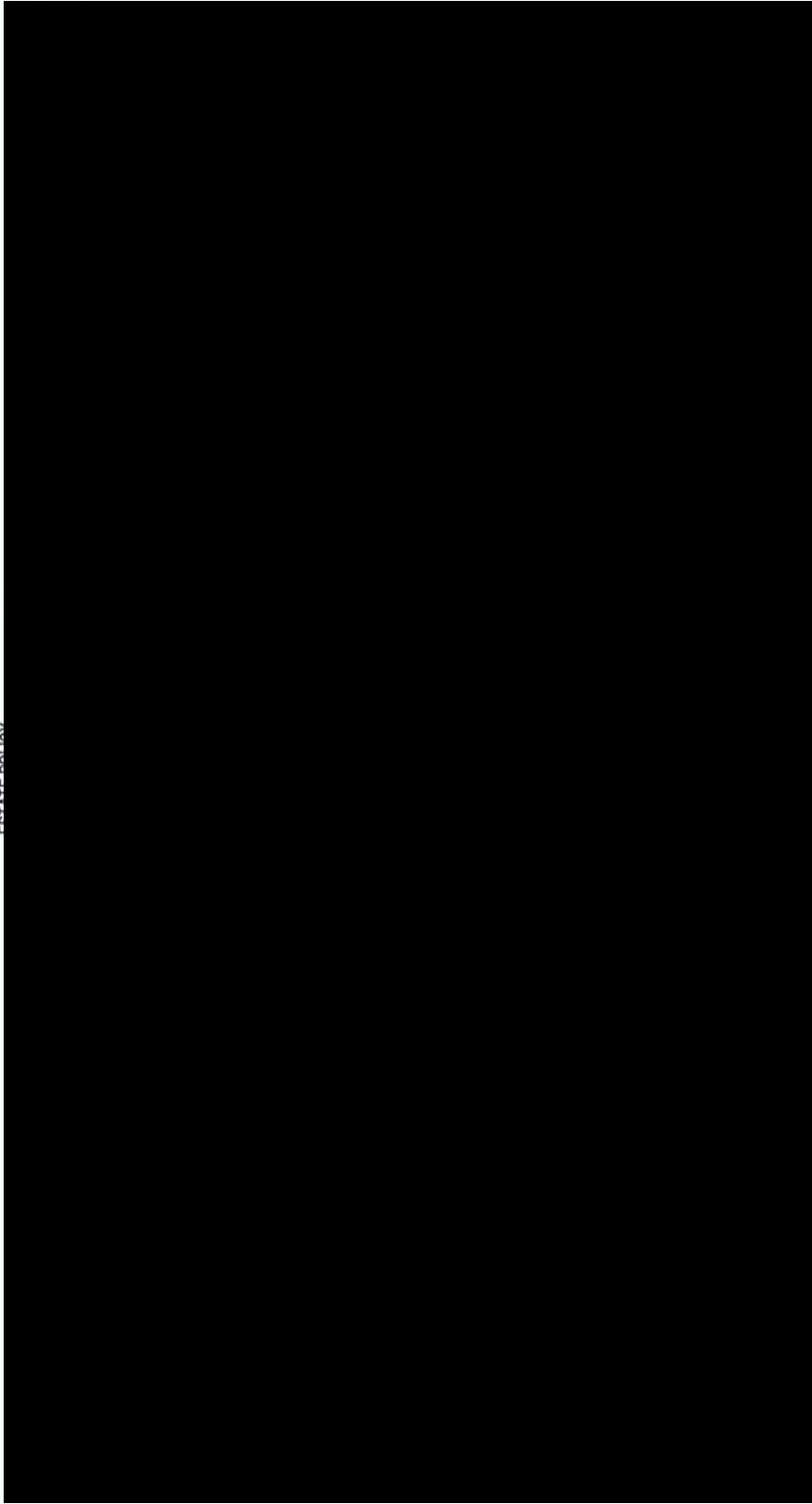
Revised 29/07/02



HEALTH ESTATES AGENCY

Page 31

Revised 29/07/02

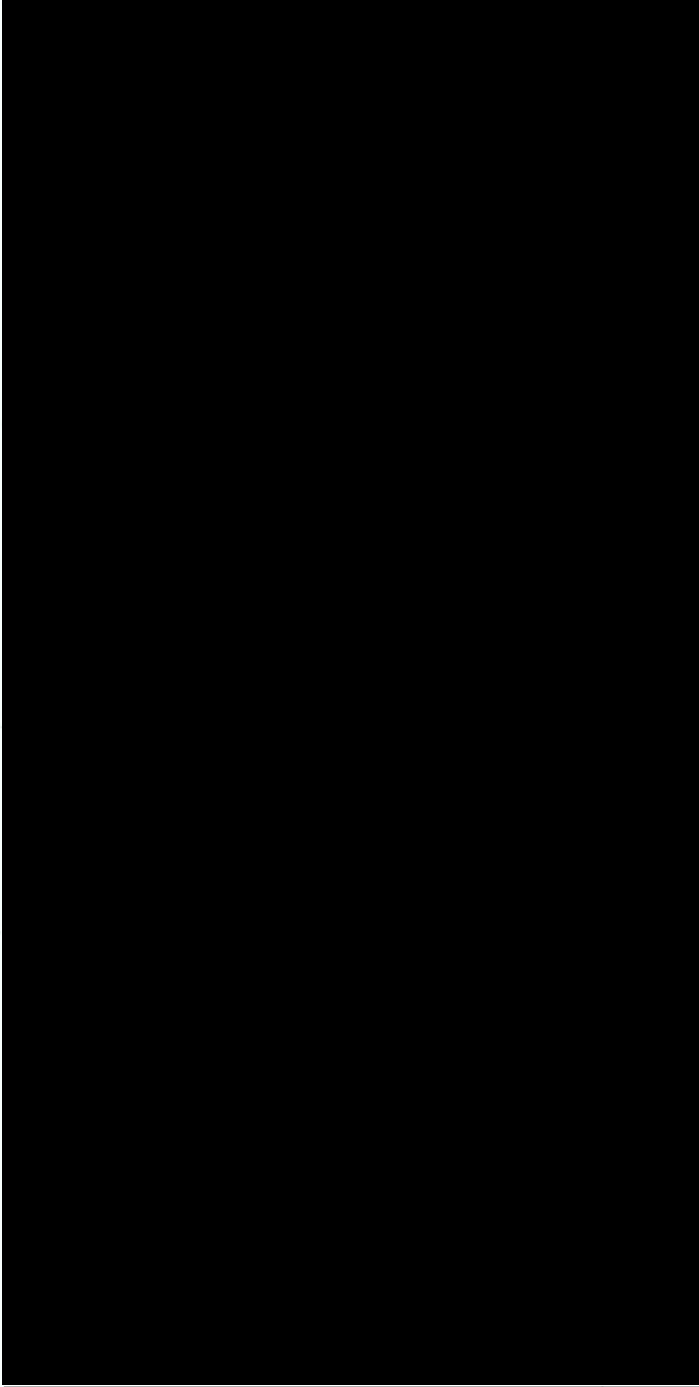


HEALTH ESTATES AGENCY

Page 32

Revised 29/07/02

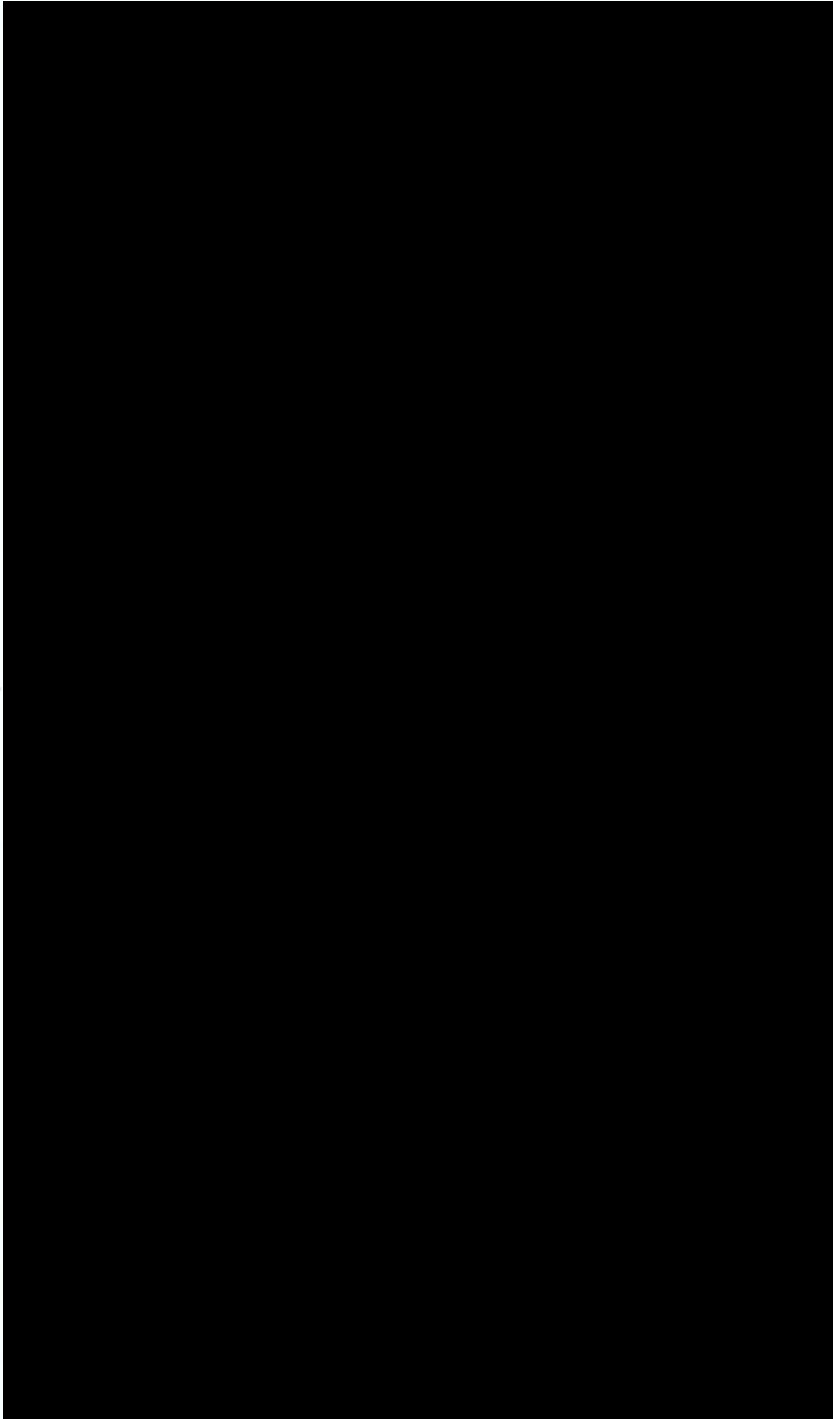
Index



NON DEPARTMENTAL BODIES

Page 33

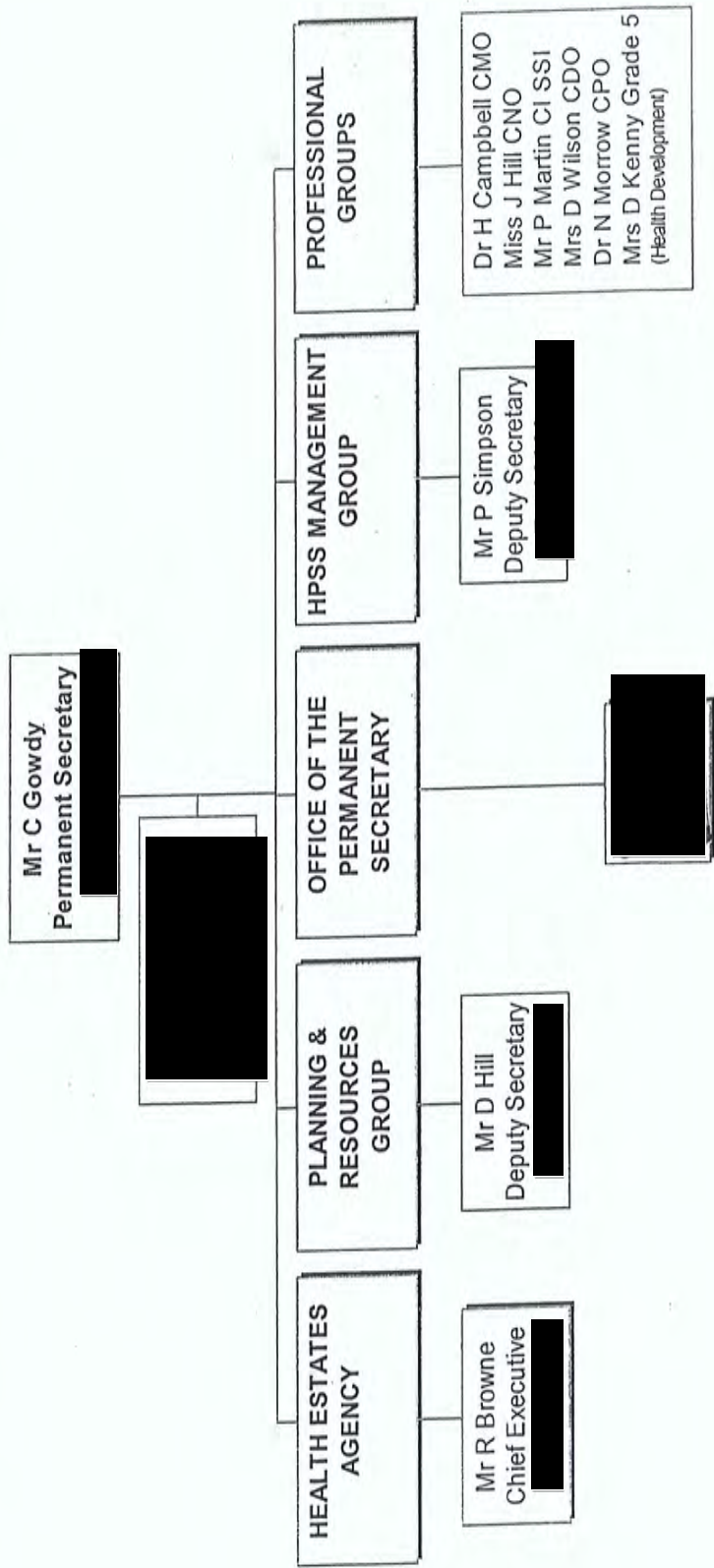
Revised 29/07/02

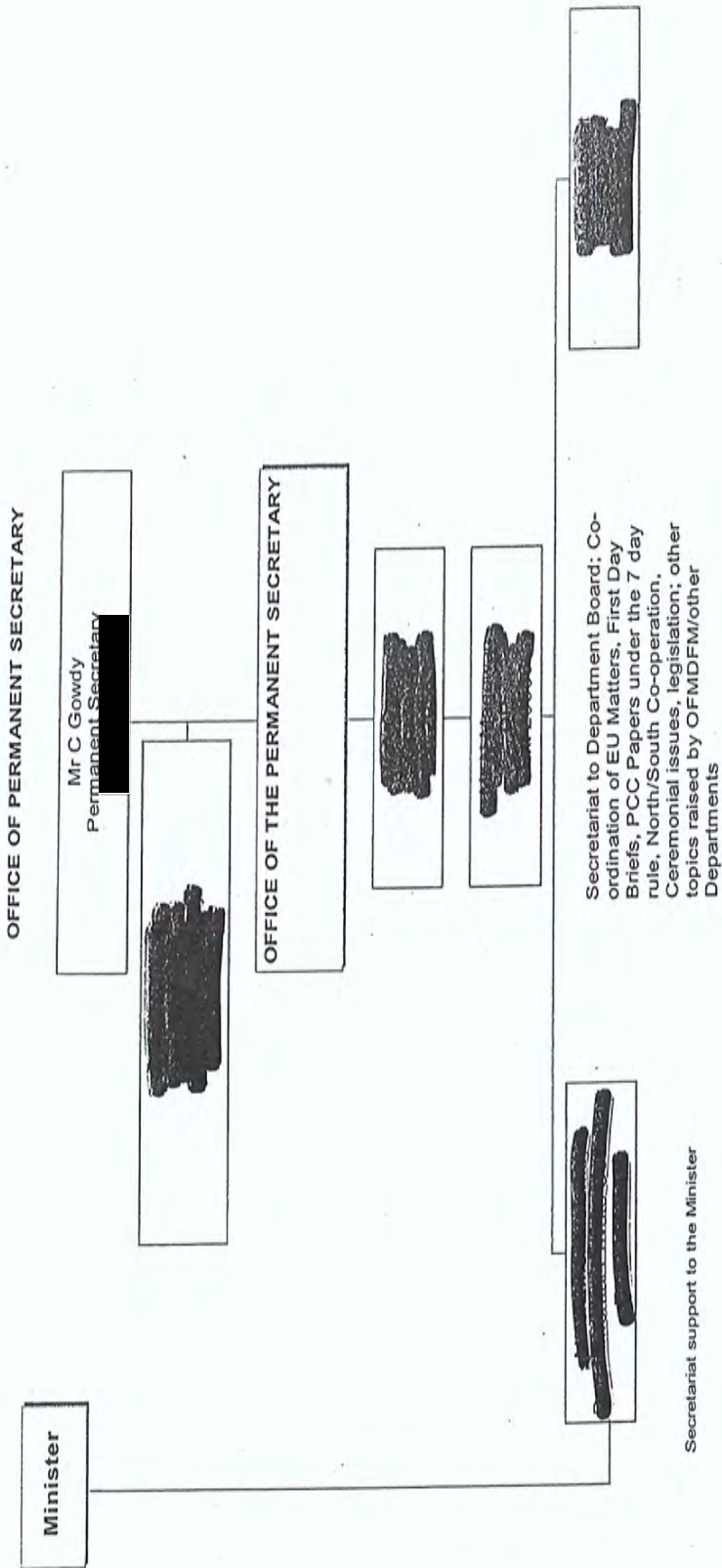


NON DEPARTMENTAL BODIES

Page 34

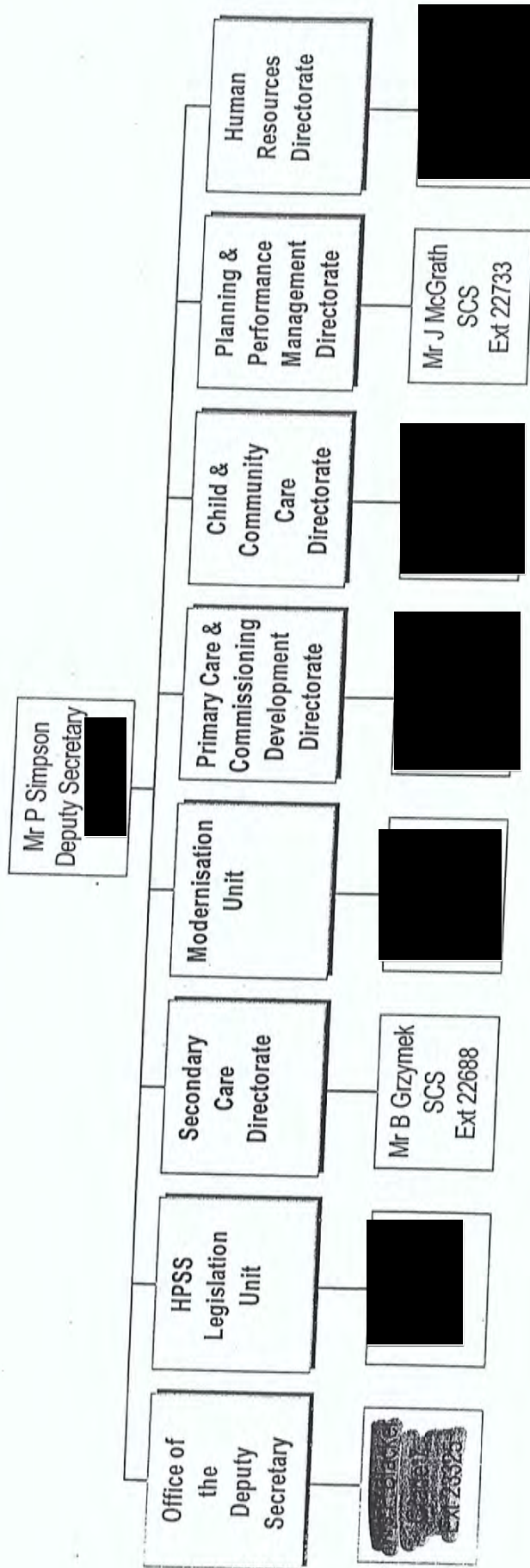
DEPARTMENT OF HEALTH, SOCIAL SERVICES AND PUBLIC SAFETY





Secretariat support to the Minister

HPSS MANAGEMENT GROUP



HPSS MANAGEMENT GROUP