

BEFORE 08/0

DEPARTMENT OF HEALTH, SOCIAL SERVICES & PUBLIC SAFETY



ORGANISATION CHART



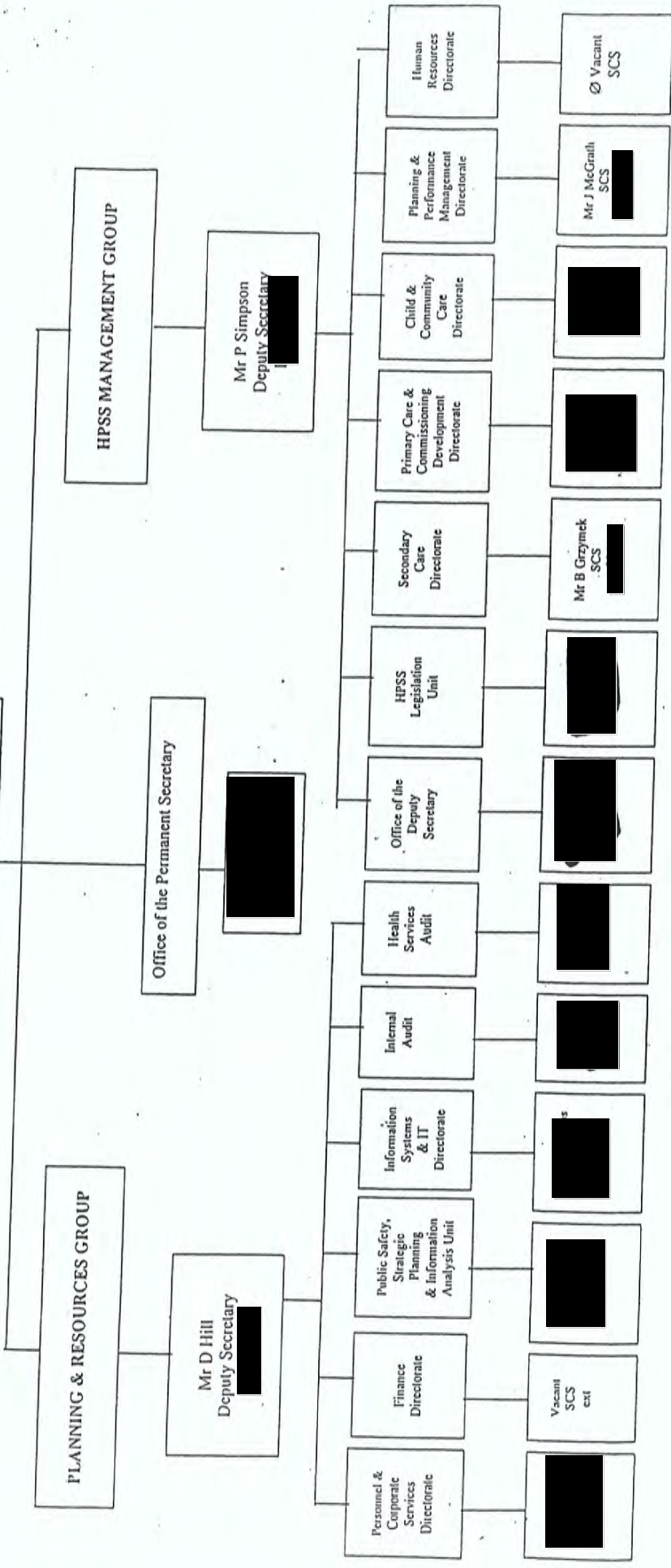
INVESTOR IN PEOPLE

	INDEX	PAGE
Overview		
•	DEPARTMENT OF HEALTH, SOCIAL SERVICES & PUBLIC SAFETY	1
•	PROFESSIONAL GROUPS	2
•	HEALTH ESTATES AGENCY	3
Structure		
•	OFFICE OF THE PERMANENT SECRETARY	4
•	PLANNING AND RESOURCES GROUP (MR D HILL)	
-	Personnel & Corporate Services Directorate	5
-	Finance Directorate	6
-	Public Safety, Strategic Planning & Information Analysis Unit	7
-	Information Systems & IT Directorate	8
-	Internal Audit and Health Services Audit	9
•	HPSS MANAGEMENT GROUP (MR P SIMPSON)	
-	Office of the Deputy Secretary	10
-	HPSS Legislation Unit	10
-	Secondary Care Directorate	11
-	Primary Care & Commissioning Development Directorate	12
-	Child & Community Care Directorate	13
-	Planning & Performance Management Directorate	14
-	Human Resources Directorate	15
•	PROFESSIONAL GROUPS	
-	Medical & Allied Services (incl Public Health)	16
-	Nursing & Midwifery Advisory Group	17
-	Social Services Inspectorate	18
-	Dental Services	19
-	Pharmaceutical Advice & Services	20
•	HEALTH ESTATES AGENCY (MR R BROWNE)	
-	Estate Policy Directorate	21
-	Consultancy Services Directorate	22
-	Estates Development Directorate	23
•	MENTAL HEALTH COMMISSION	24
•	Secondments to Non-Departmental Public Bodies	
-	NICARE	
-	Central Services Agency	25
		26

h:\msoff\winword\cardevre\orgindex.doc

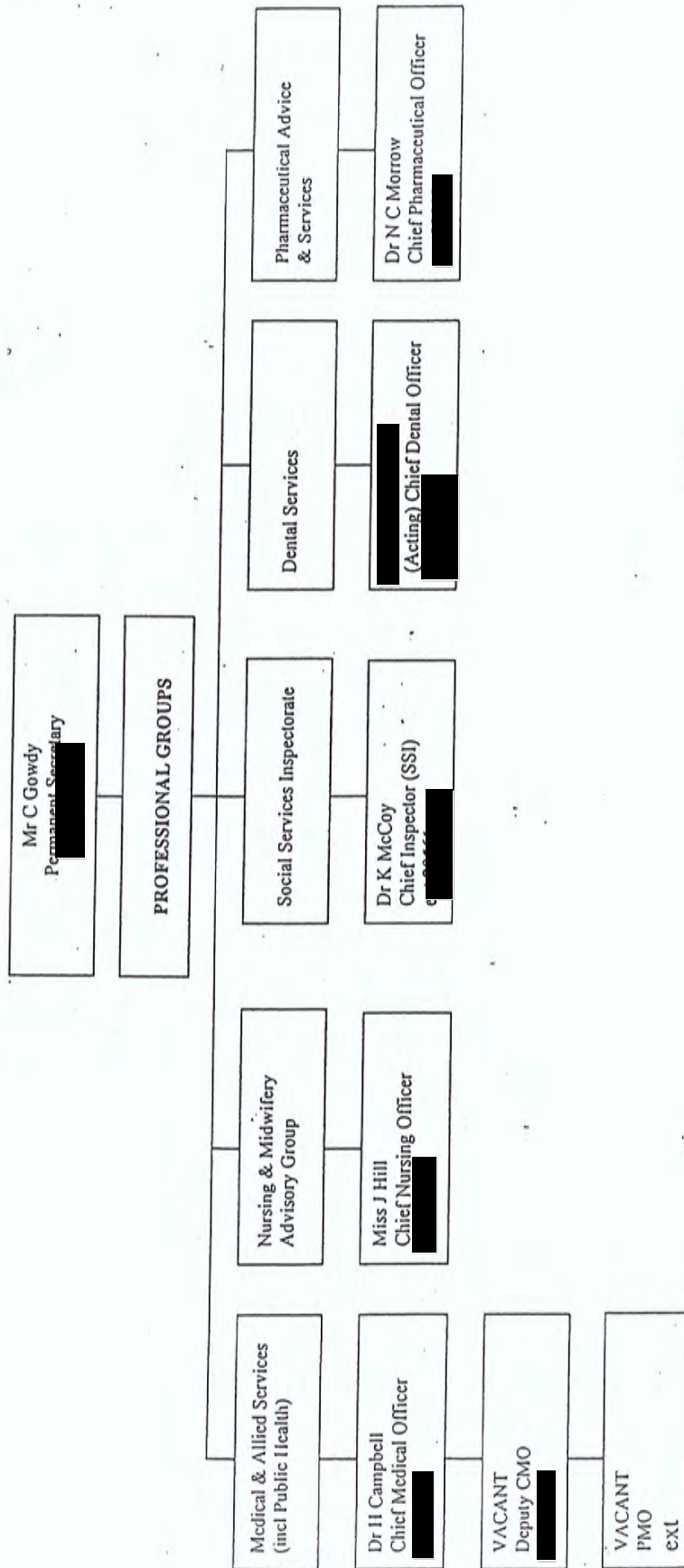
DEPARTMENT OF HEALTH, SOCIAL SERVICES
& PUBLIC SAFETY

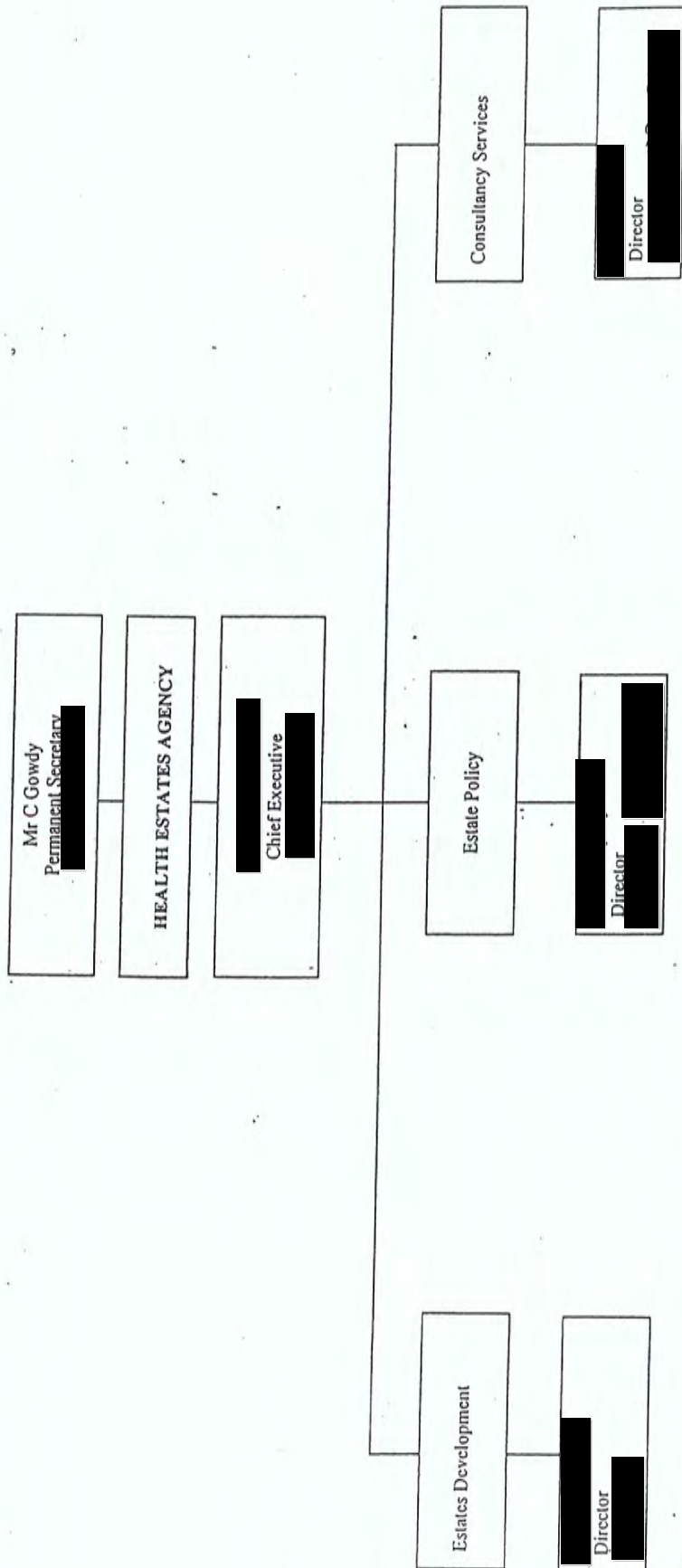
MR C GOWDY
PERMANENT SECRETARY

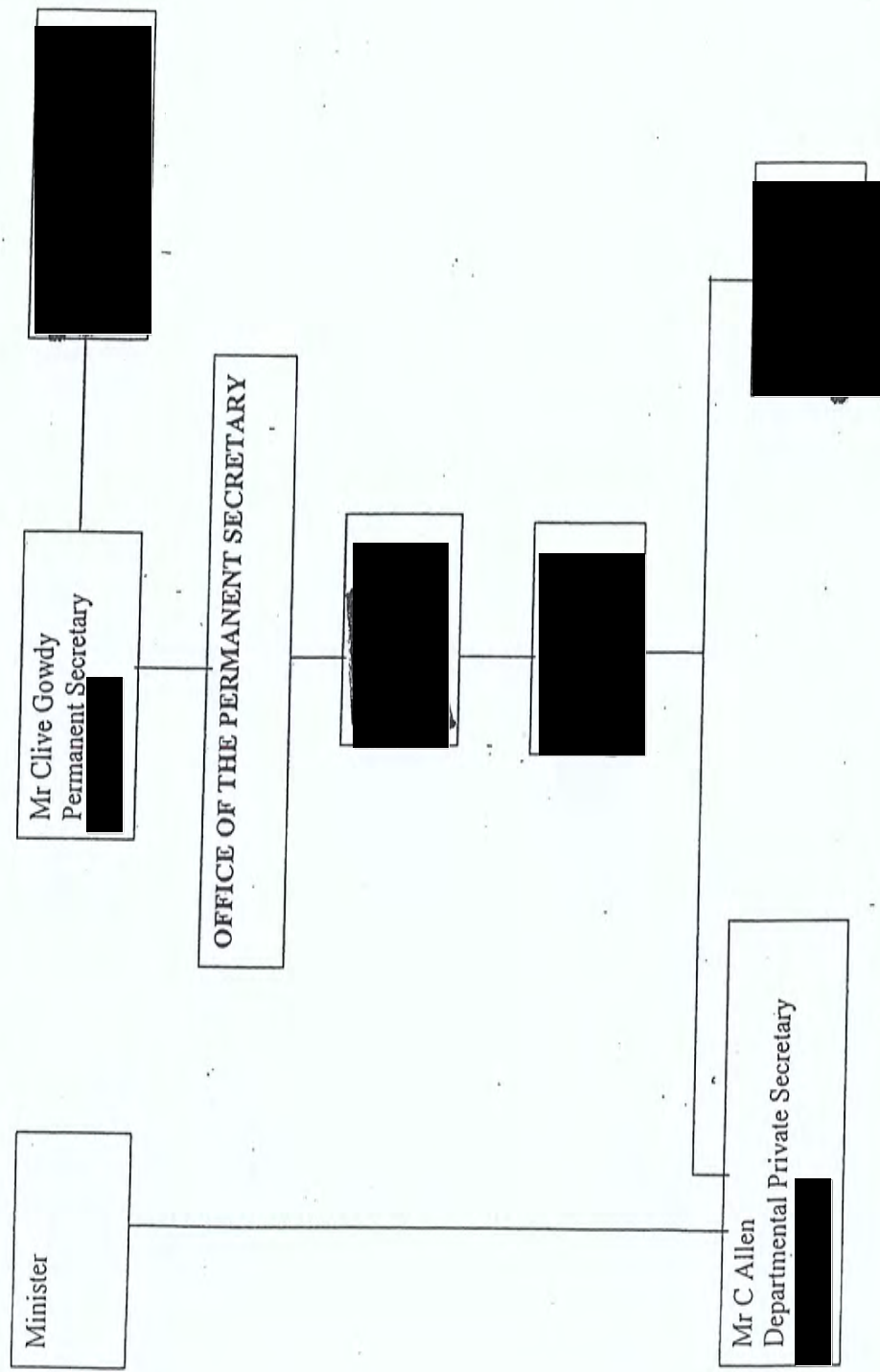


*B McCann temporarily in post

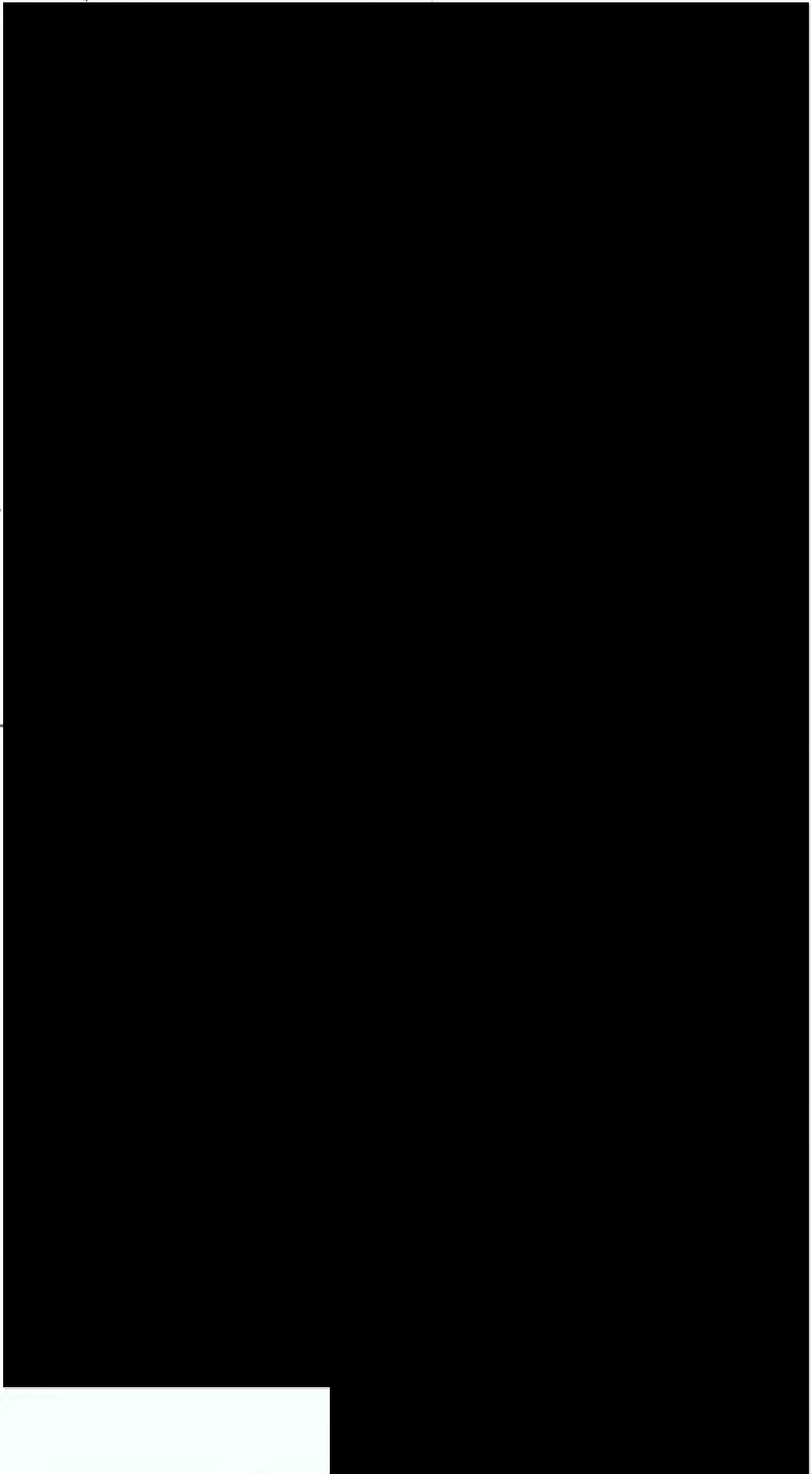
ØJ McGrath will head Directorate until SCS Director is appointed



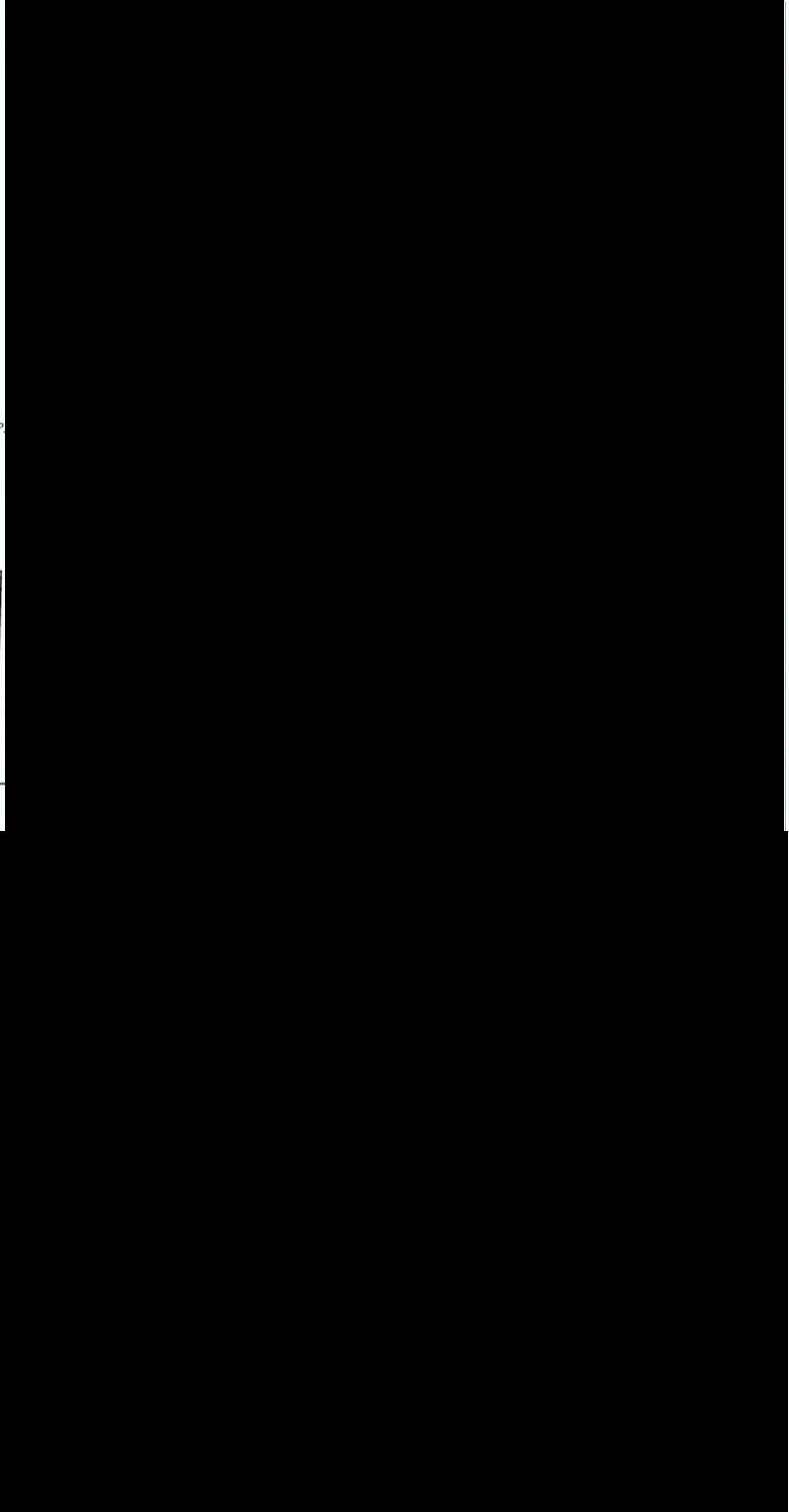




PLANNING AND RESOURCES GROUP



PLANNING AND RESOURCES GROUP



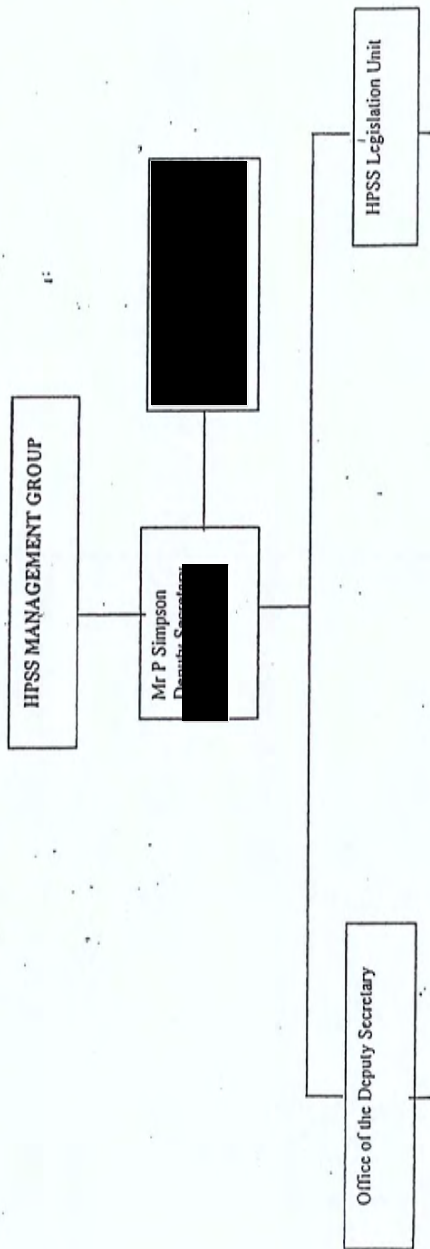
PLANNING AND RESOURCES GROUP

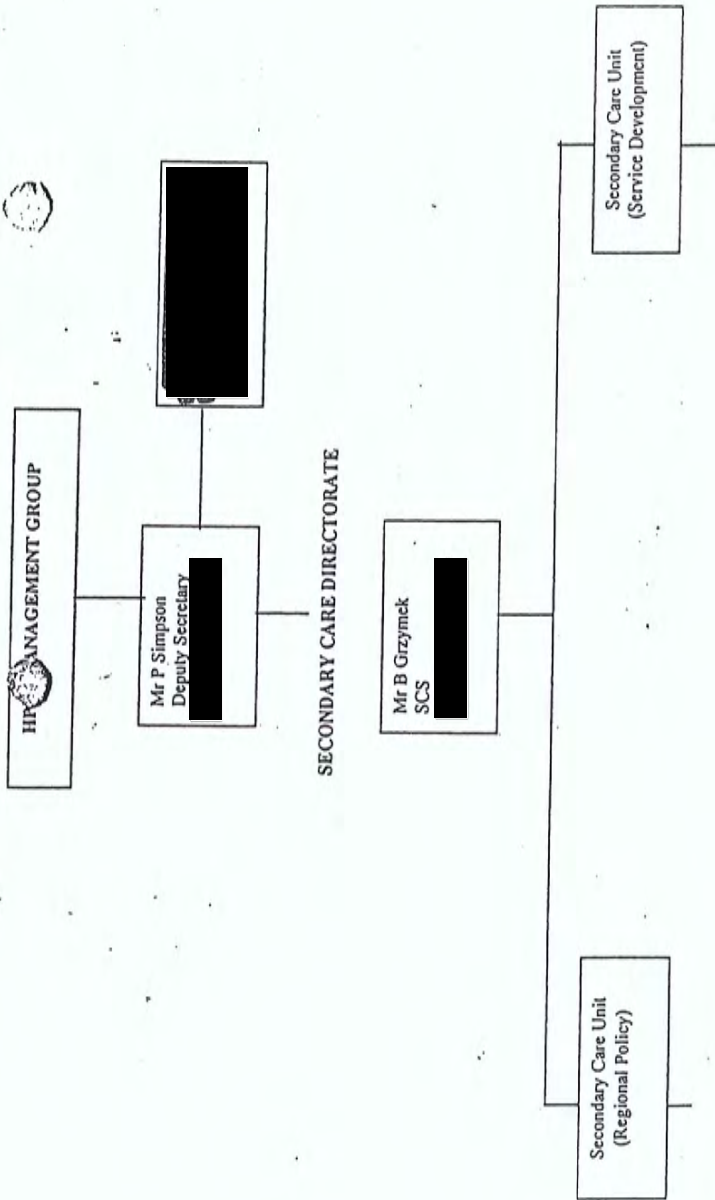


PLANNING AND RESOURCES GROUP



* B McCann temporarily in post





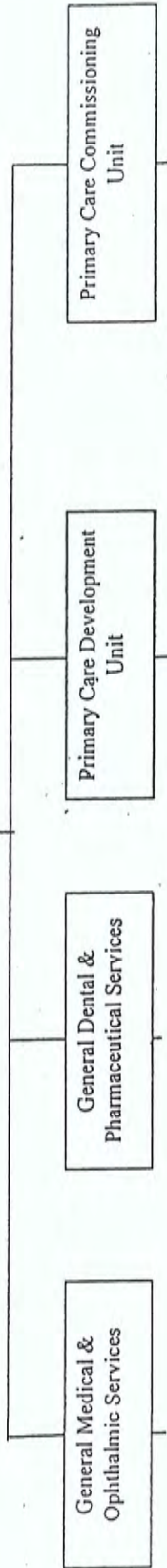
HPSS MANAGEMENT

Mr P Simpson
Deputy Secretary



PRIMARY CARE & COMMISSIONING DEVELOPMENT

SCS



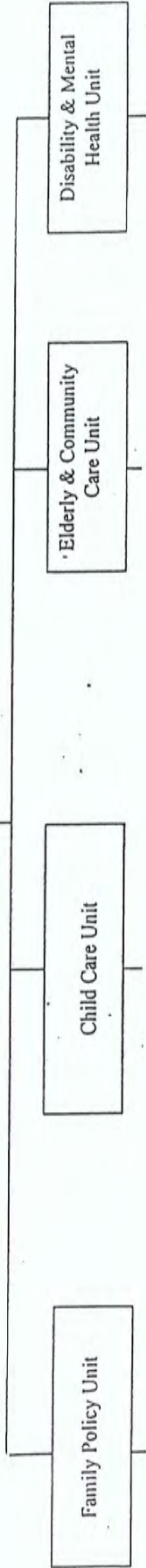
HPSS MANAGEMENT GROUP

Mr P Simpson
Deputy Secretary

Senior Personal Secretary

CHILD & COMMUNITY CARE DIRECTORATE

[Redacted]



ley

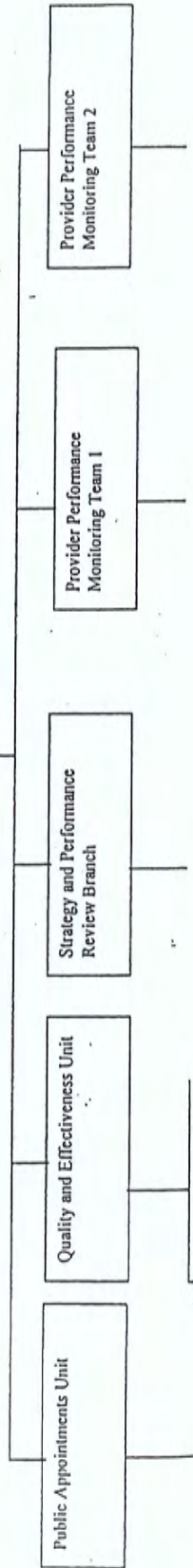
HPSS MANAGEMENT GROUP

Mr P Simpson
Deputy Secretary



PLANNING AND PERFORMANCE MANAGEMENT DIRECTORATE

Mr J McGrath



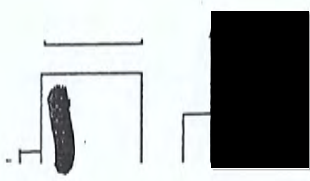
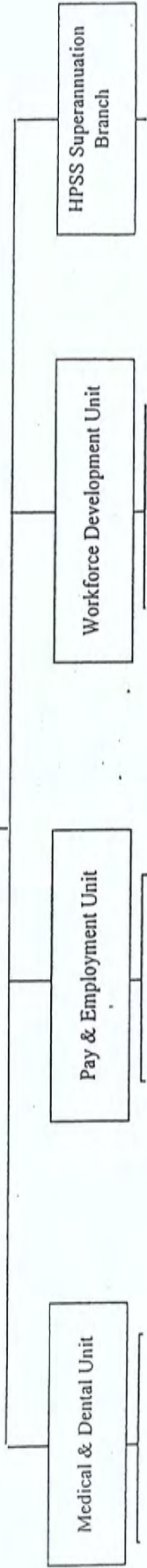
HPSS MANAGEMENT GROUP

Mr P Simpson
Deputy Secretary

*will be headed by J McGrath until
new SCS Director appointed

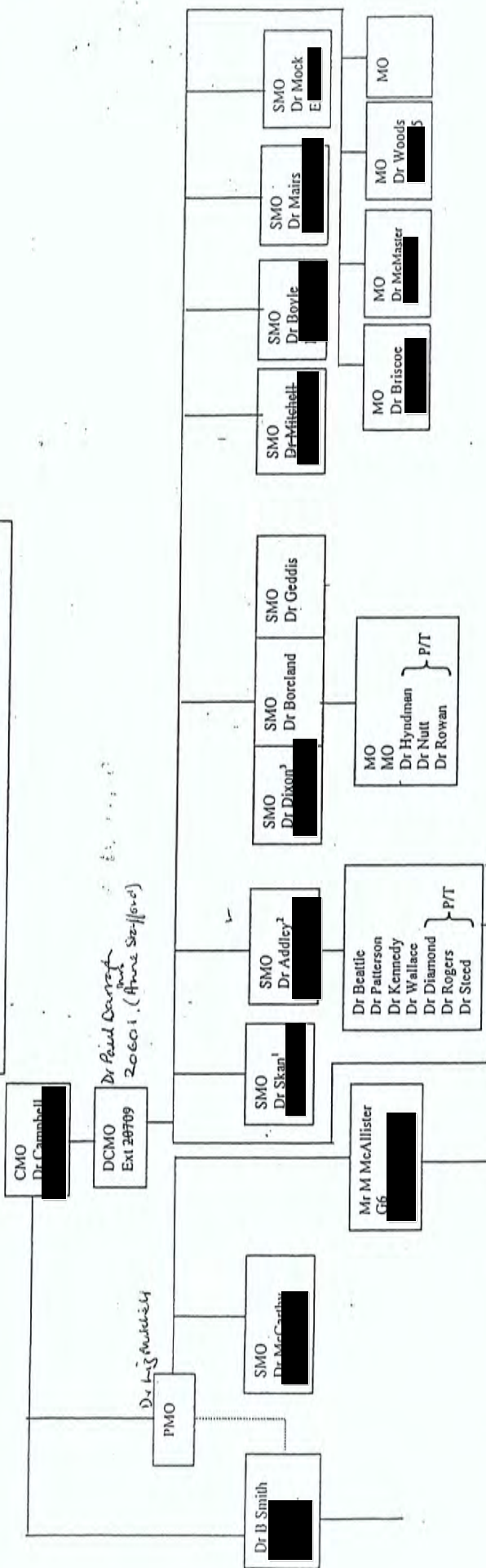
HUMAN RESOURCES DIRECTORATE

*Va
SCS
Ext



PROFESSIONAL GROUPS

MEDICAL AND ALLIED SERVICES (incl Public Health)



J Gibbs

1 Employment Medical Advisory Services
 2 Director of Occupational Health Services
 3 Head of Specific Services Branch

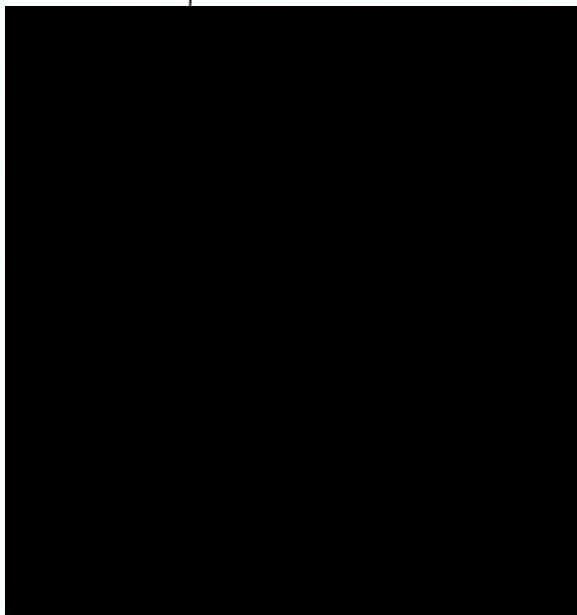
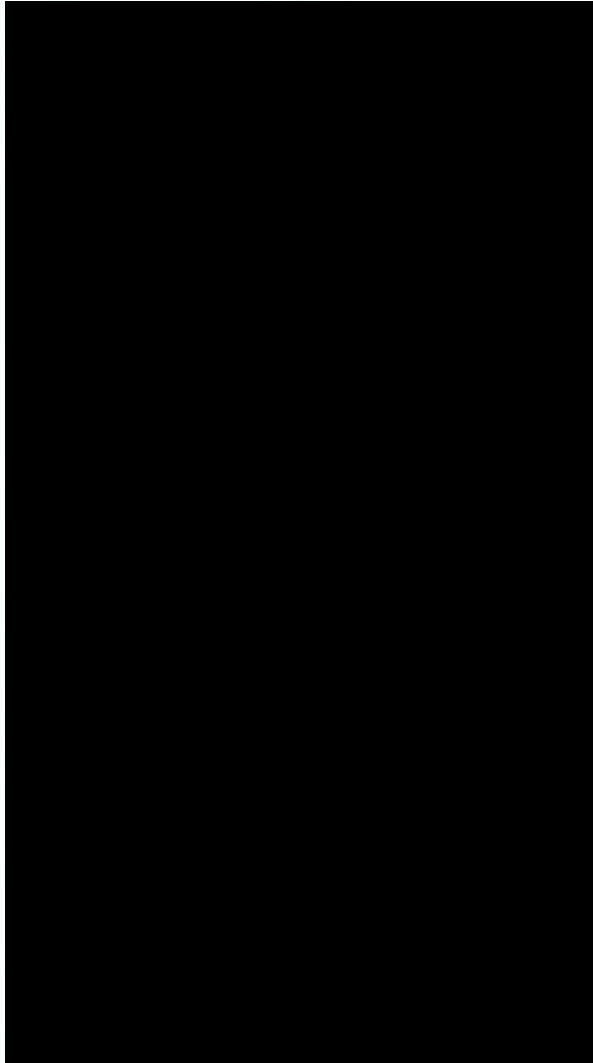
PROFESSIONAL GROUPS

NURSING AND MIDWIFERY ADVISORY GROUP

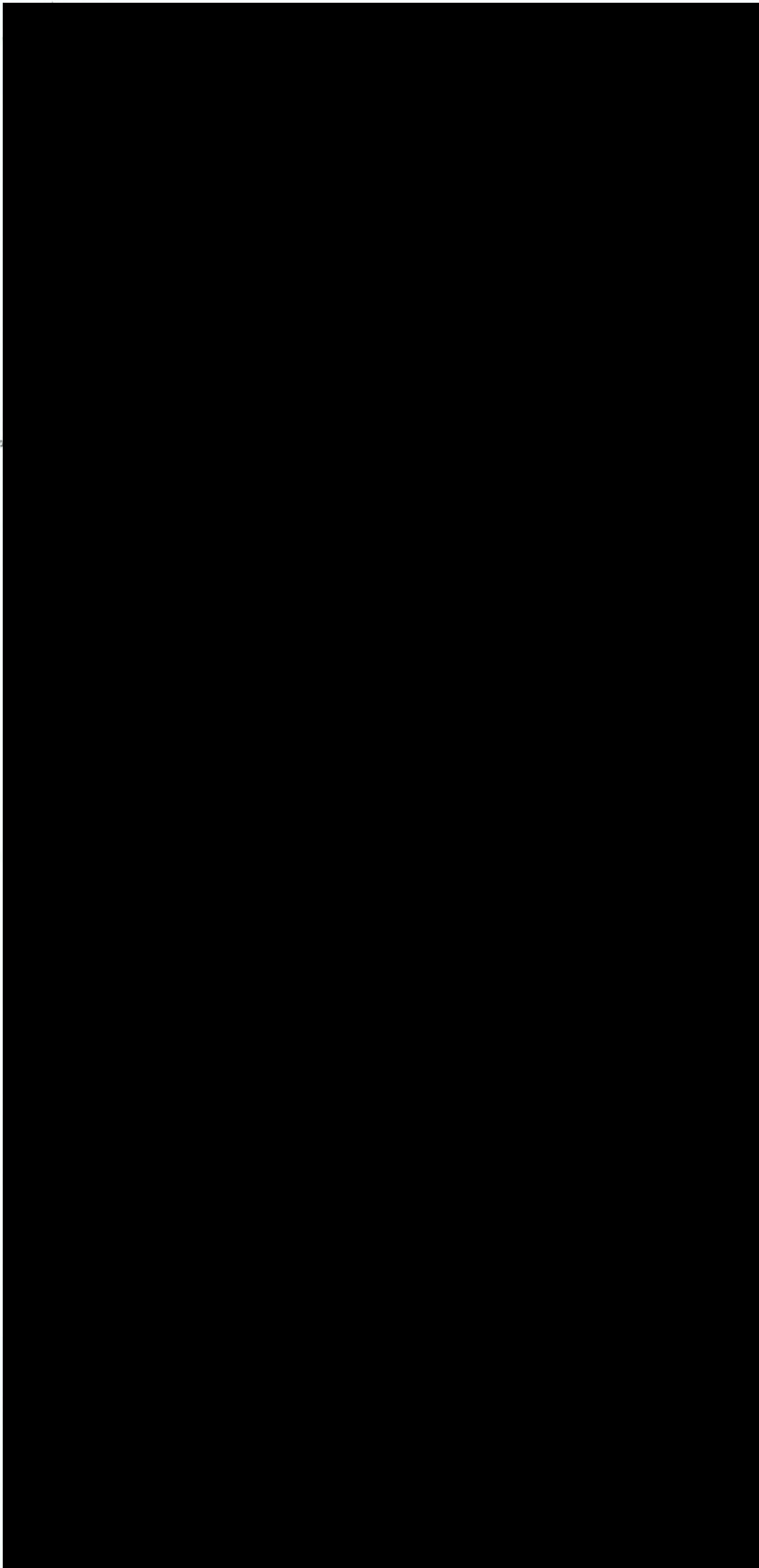
Miss J E Hill
Chief Nursing Officer

- Education and Training
 - Workforce Development
 - Research & Development
 - Clinical Effectiveness
 - Targeting Social Need
 - Legislation
 - Leadership
 - Professional Regulation
- Mental Health Services
 - Learning Disability Services
 - The Elderly
 - Physical and Sensory Handicap
 - Registration and Inspection
 - Units
 - Nursing Agencies
 - Administration of Medicines and Misuse of Drugs
 - Emergency Planning
- Midwifery & Maternity Services
 - Child Health and Child Care
 - Paediatrics
 - Community Nursing
 - Public Health
 - Nurse Prescribing
 - Primary Care
- Regional and Acute Services
 - Strategy for Nursing
 - Midwifery and Health Visiting
 - Information Management & Technology
 - Quality
 - Leadership
 - Cancer and Palliative Care
- Specific Nursing Services
- Capital Planning
 - Management of HSS Estates
 - Equipment Management
 - Estate Development

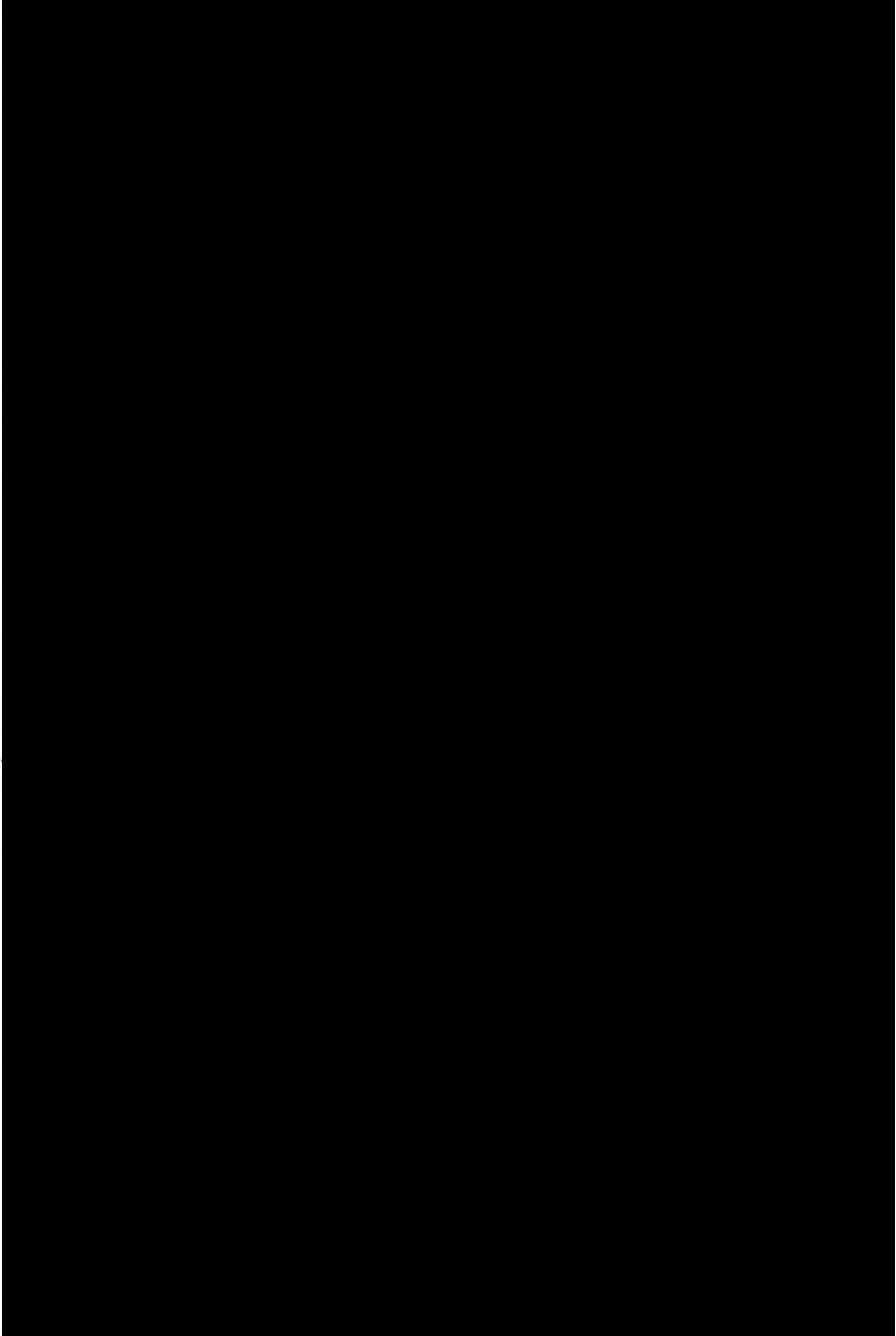
PROFESSIONAL GROUPS



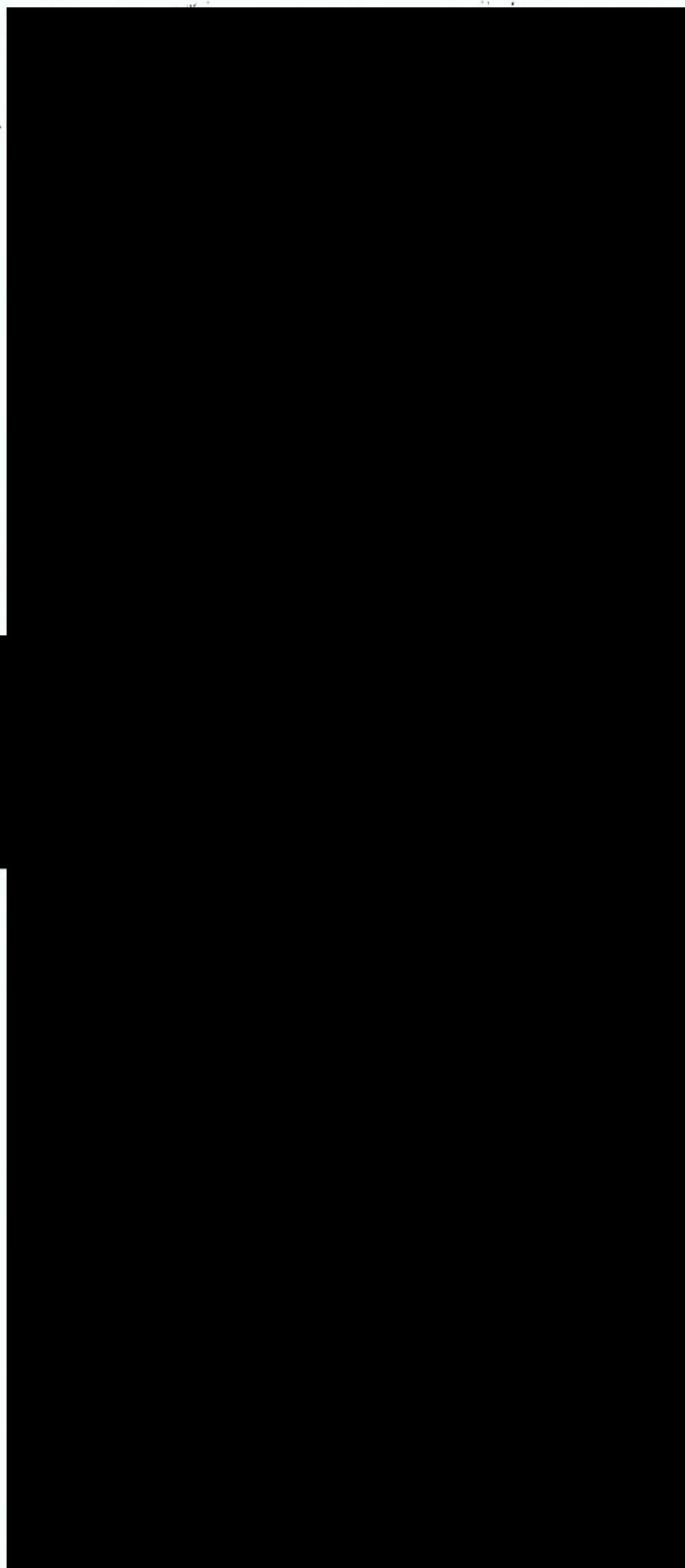
PROFESSIONAL GROUPS



HEALTH ESTATES AGENCY

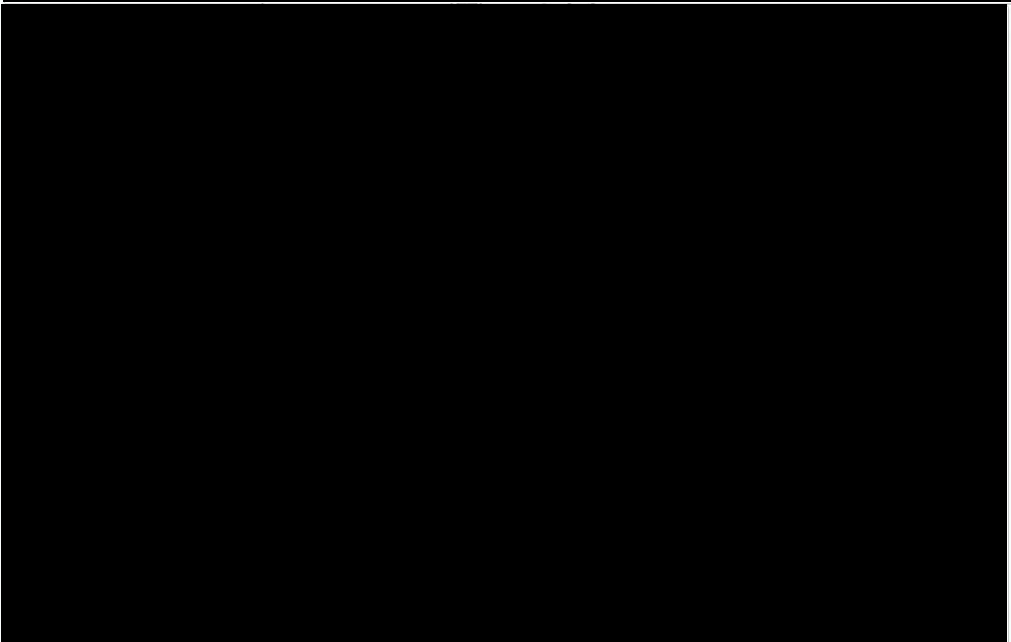
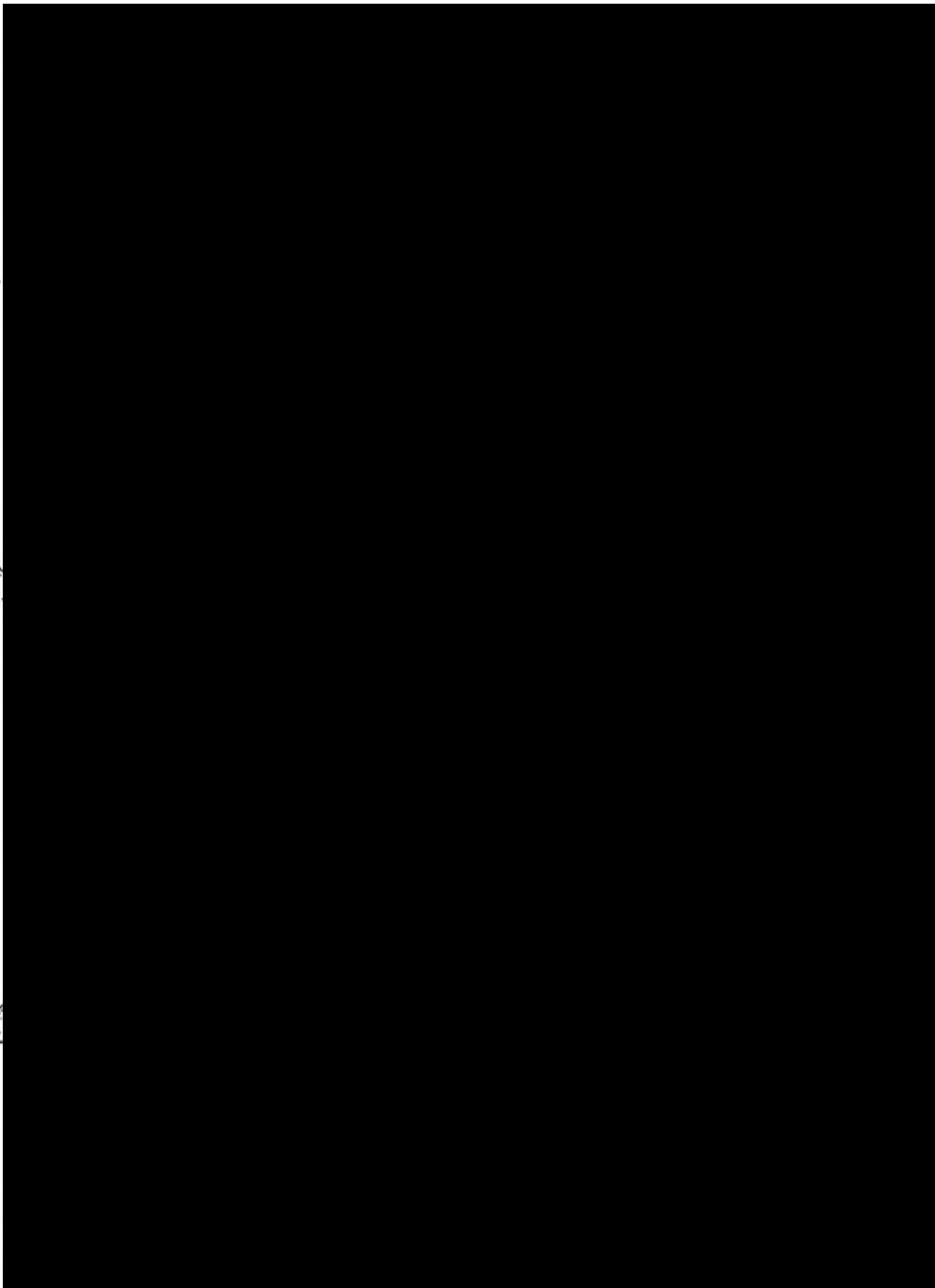


HEALTH ESTATES AGENCY



??

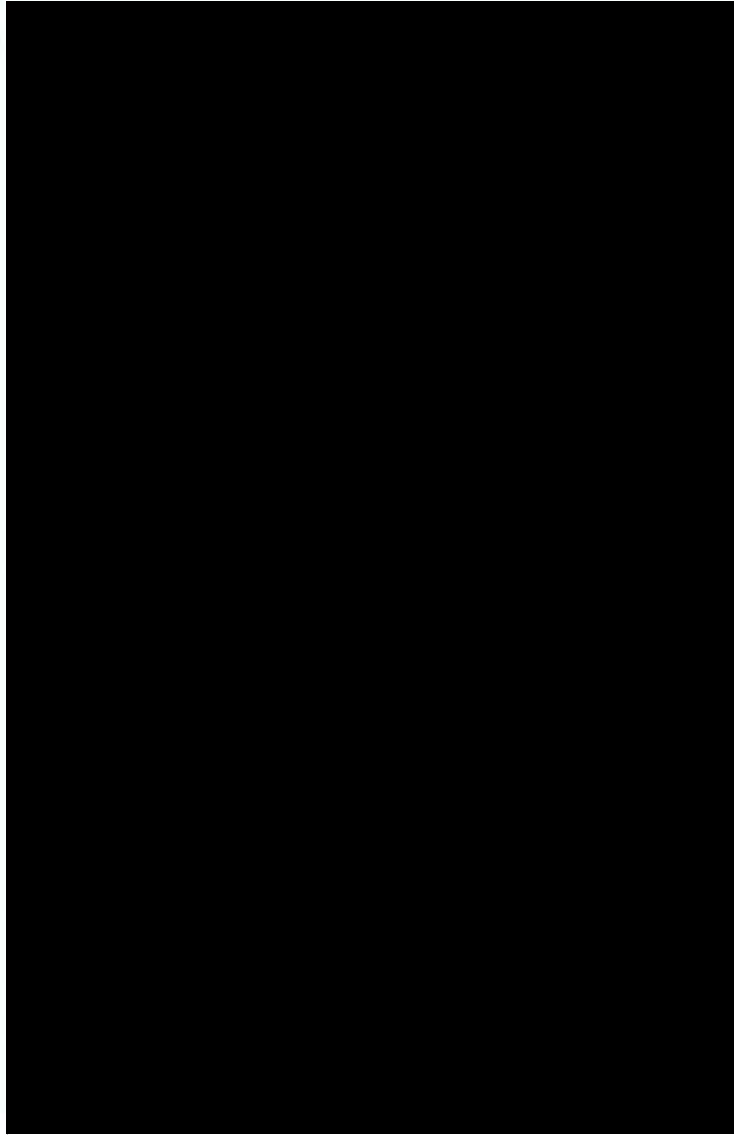
HEALTH ESTATES AGENCY



NON-DEPARTMENTAL PUBLIC BODIES



SECONDMENTS TO NON-DEPARTMENTAL PUBLIC BODIES



SECONDDMENTS TO NON-DEPARTMENTAL PUBLIC BODIES

