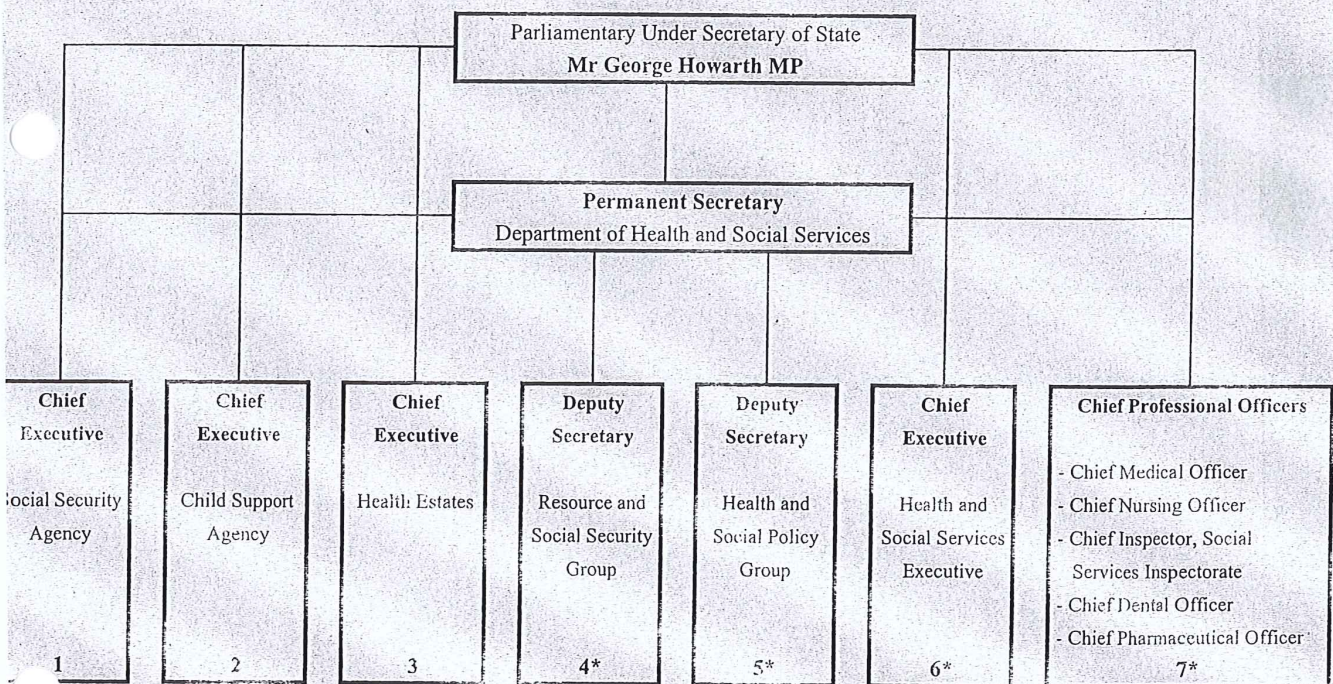


DEPARTMENT OF HEALTH AND SOCIAL SERVICES - STRUCTURE



Collectively referred to as the Core Department

Administers social security benefits in parity with the rest of the United Kingdom through central offices and a network of local social security offices.

Provides child support services in parity with the rest of the United Kingdom, focused on the delivery of fair, efficient and effective arrangements for the assessment, collection, enforcement and payment of child maintenance.

Provides a range of estate services to clients across the health and social services sector.

Negotiates and manages the allocation and control of the Department's resources, provides personnel services for the Core Department, Health Estates and all of the Independent Statutory Bodies, and corporate, financial and IT services. Also responsible for social security policy and legislation.

Sets the overall strategy for health and social policies, including issues with a cross-departmental flavour. The Group also administers the range of social and charities legislation and discharges functions covering relations with the voluntary sector and community development across Government, as well as promoting the wider attainment of health and social gain.

Develops policy on, and secures the efficient and effective delivery of, health and social services.

Provides advice to, and discharges functions for, the Department but also provides services to the wider NICS and the NIO.